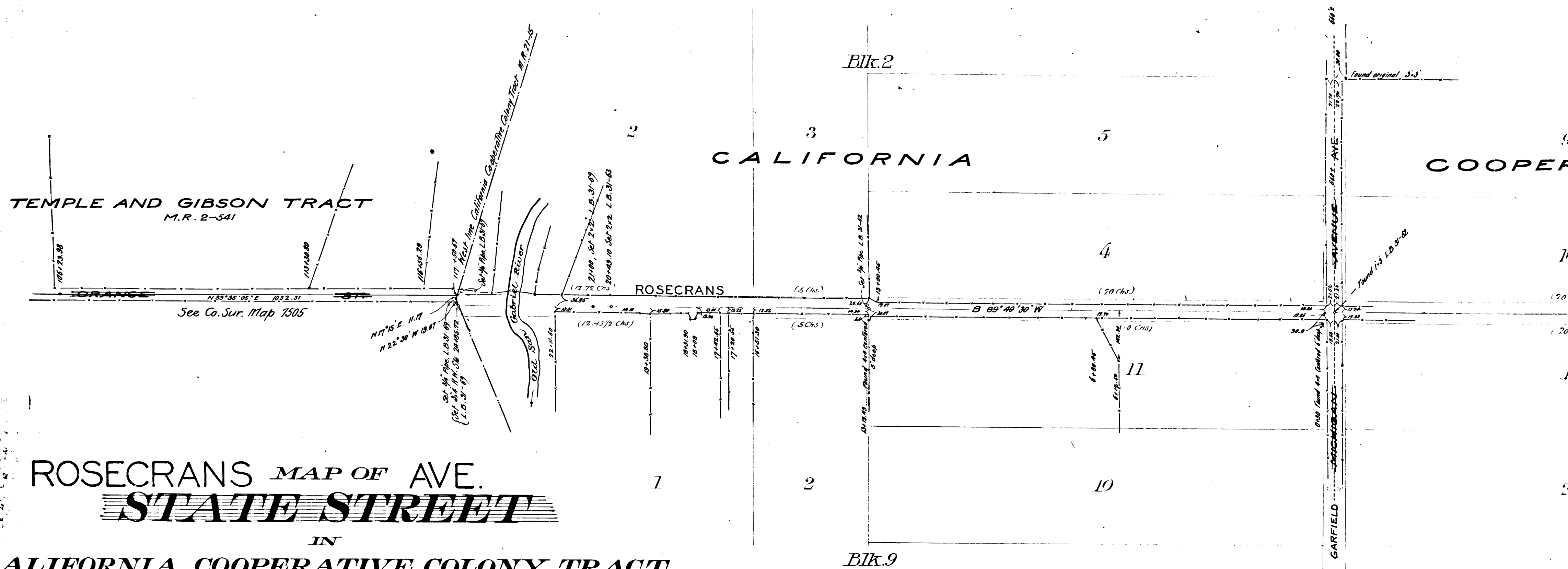


TEMPLE AND GIBSON TRACT  
M.R. 2-541



ROSECRANS MAP OF AVE.  
**STATE STREET**  
 IN  
 CALIFORNIA COOPERATIVE COLONY TRACT  
 M.R. 21-16

June 1908

IVORY B. NOBLE County Surveyor

Scale, 150 ft. to 1 in.

L. B. 31-62

Red figures are record

C. S. 7506

State St. changed to Rosecrans Ave. D-49-105 Min. Bk. 58-270

1.M.32

C	S	7	5	0	6
A	1	OF	A	2	

Found 2:2 set by James  
on S. boundary of Carleton  
L.B. 31-82

Found original 5:5

Blk.3

Blk.4

9  
COOPERATIVE

M.R. 21-16

12  
COLONY

7  
TRACT

10

11

8

(20 Chs.)

(20 Chs.)

(20 Chs.)

(20 Chs.)

(20 Chs.)

(20 Chs.)

1

16

1

2

15

Blk.8

Blk.7

STATE 589°40'30" N STREET

AVE.

589°40'30" N

CARFIELD  
JACOBUS AV.  
SERVENSIE AVE.

BLVD  
PARADISE

N

CS 7506  
A2 OF A2