

COUNTY FARM
RANCHO LOS AMIGOS
TRACT ACQUIRED FROM BEDOME
 COUNTY SURVEYORS MAP No 7529

August 1908. **IVORY B. NOBLE** County Surveyor
 Scale: 1 in = 100 ft.
 F.B. 32 73

STEWART AND GRAY ROAD

HELENE

COUNTY

FARM

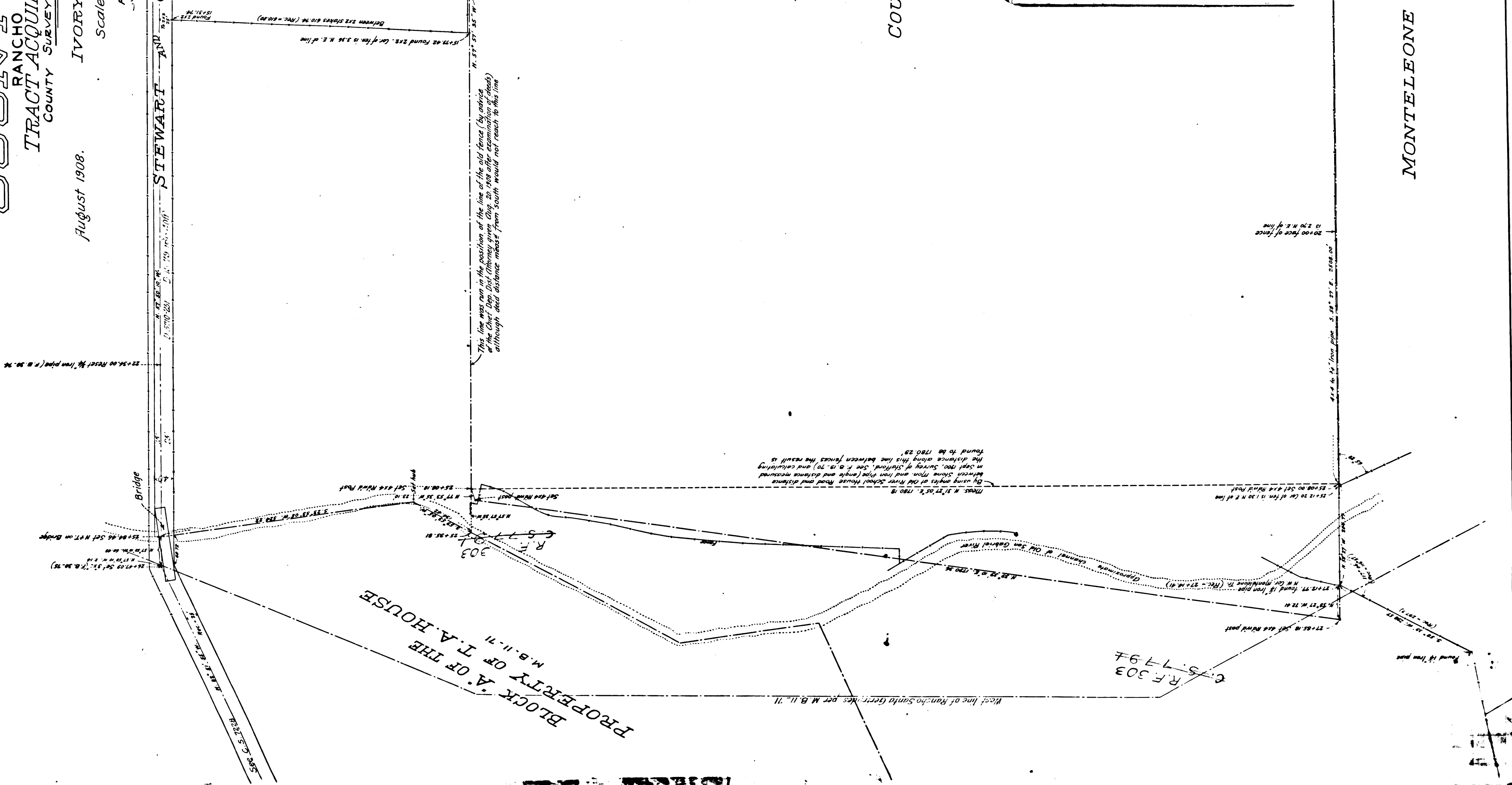
Bedome to L.A. County
 D. 1379-292 D. 2. 292
 C. S. 7045
 See C. S. 7529
 For later Survey see CS 7589 Shit 2
 C. S. B. 1035

CS 7529
 A1 OF A2

MONTELEONE

M. B. 6. 53

TRACT



COUNTY FARM
RANCHO LOS AMIGOS
TRACT ACQUIRED FROM BEDOME
COUNTY SURVEYORS MAP NO 7529

August 1908. **IVORY B. NOBLE** County Surveyor.

Scale: 1 in = 100 ft.
 F. B. 32. 73

Note: True courses obtained from solar observation.

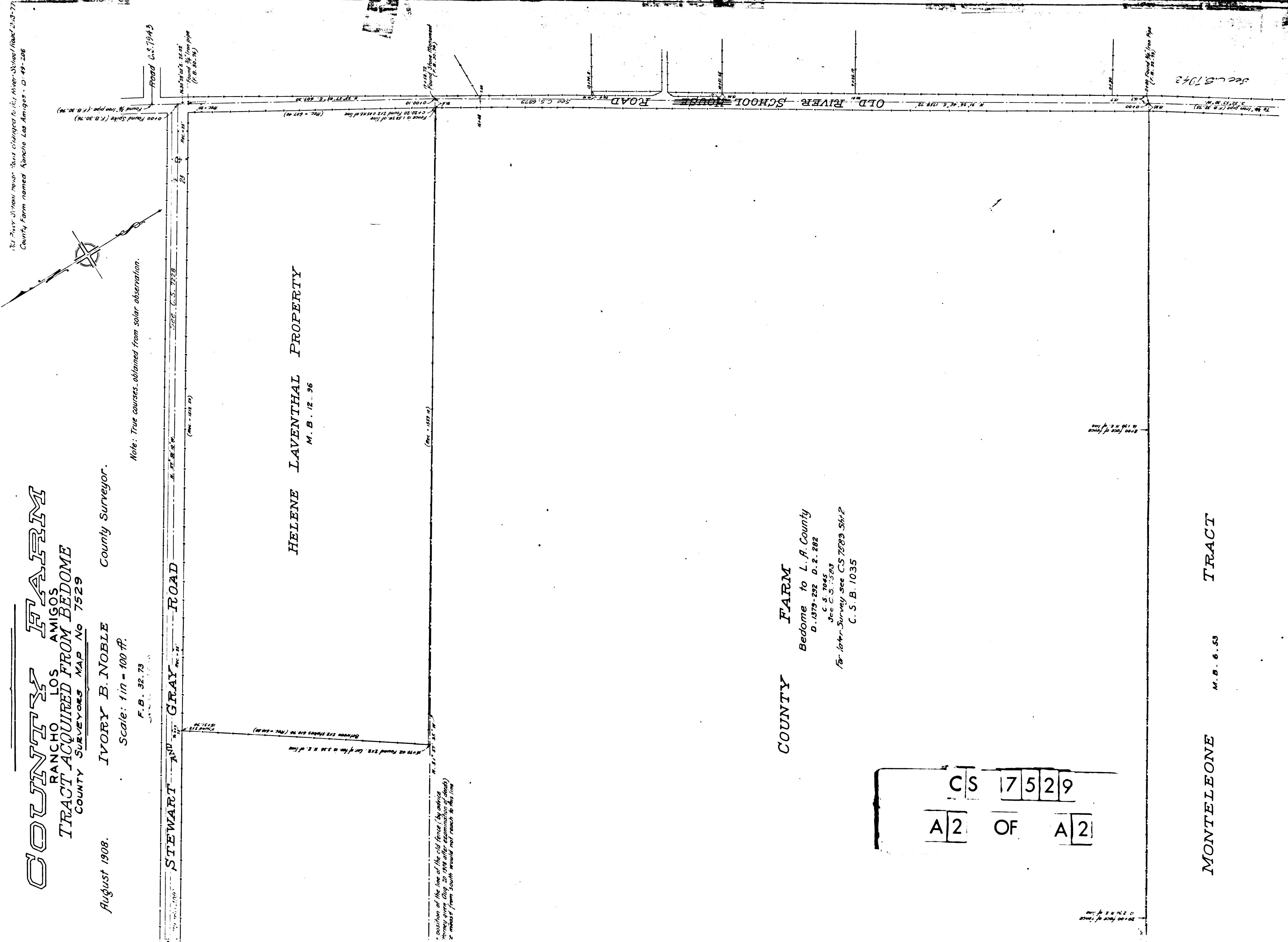
STEWART AND GRAY ROAD

HELENE LAVENTHAL PROPERTY
 M. B. 12. 96

COUNTY FARM
 Bedome to L. A. County
 D. 1379-292 D. 2. 282
 C. S. 2045
 See C. S. 7583
 For later Survey see CS 7589 Str. 2
 C. S. B. 1035

CS 7529
 A2 OF A2

MONTELEONE M. B. 6. 53 TRACT



174. Peter & John Moser. Bank established to the River. Survey Road 21.3-77. County Farm named Rancho Los Amigos - D. 49-206

Road U.S. 1943

Road U.S. 7043

ROAD SCHOOL HOUSE OLD RIVER

Road U.S. 7043

(Rec. - 1877. 2)

(Rec. - 1877. 2)

position of the line of the old fence (by advice survey given Aug. 20, 1908 after examination of deeds) & nearest fence south would not reach to this line

5000 feet of line

5000 feet of line