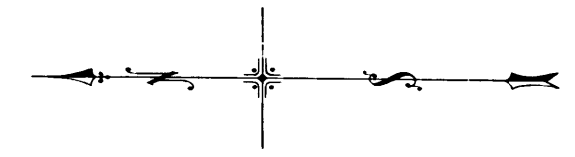
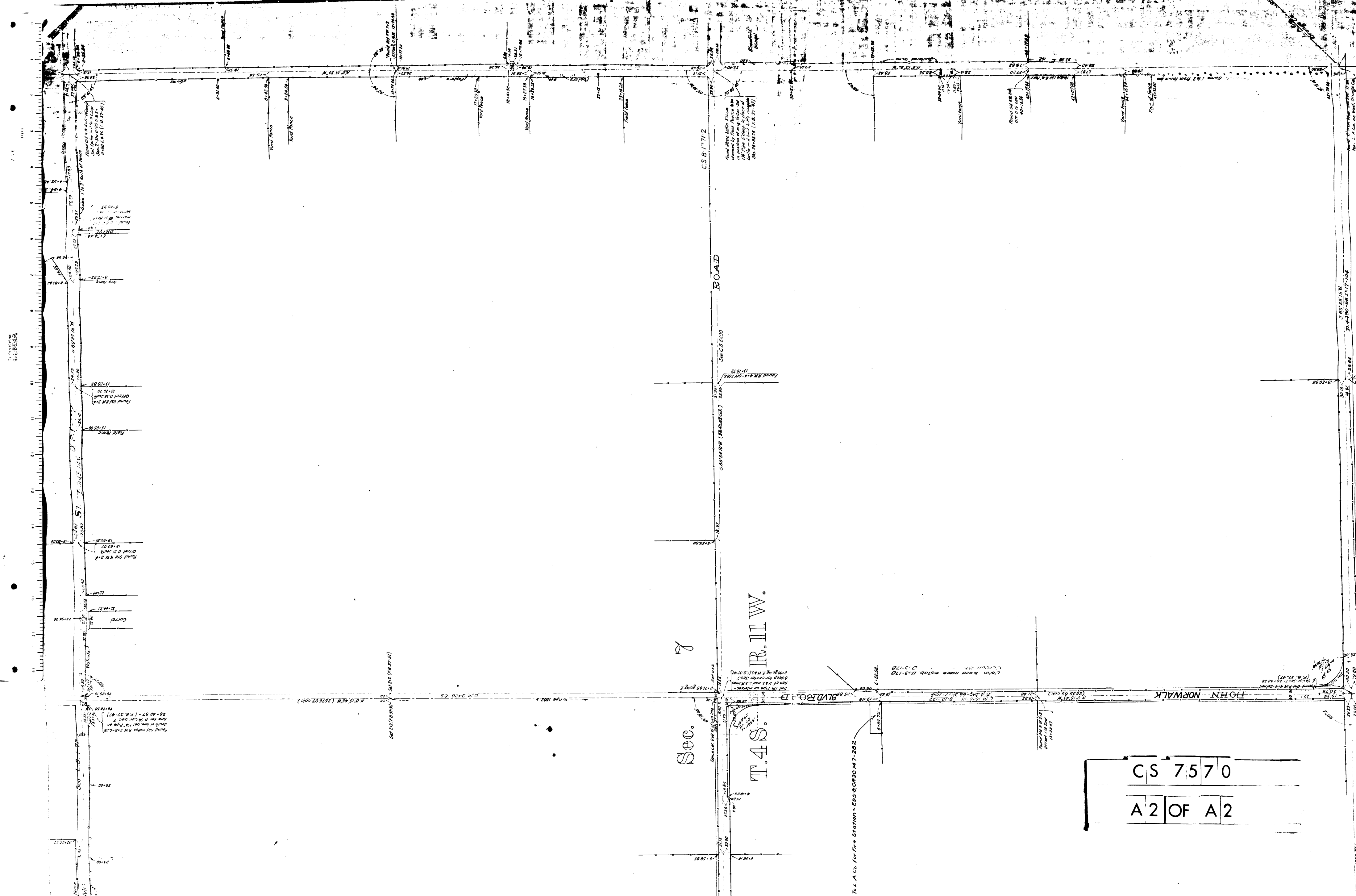


**MAP OF
SECTION 7
T.4S.R.11W.**



December, 1908
Ivory B. Noble
County Surveyor
Scale: 1 in = 150 ft.
F.B. 37-47.51
C. S. 7570
Drain Road changed to Normal Road D-49-116
I.M. 31

CS	7570
A1	OF A2



CS	7570
A2	OF A2

To L.A. Co. for Fire Station - E-56-D-30747-202

T.4S.
R.11W.

Sec. 7

ROAD

BLVD RD

JOHN NORWALK