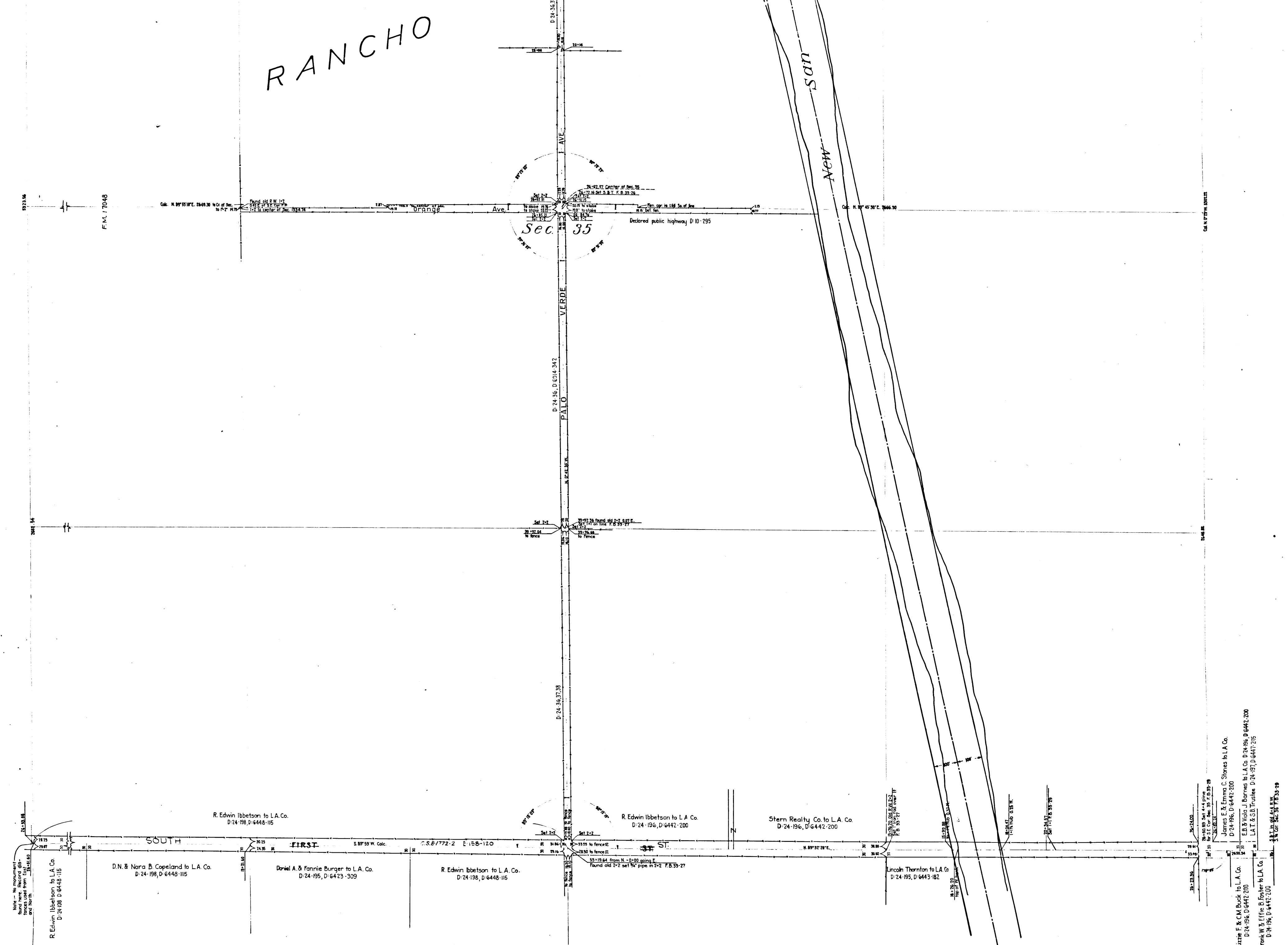


# RANCHO



Note - No monument shown for the monument located at the corner of Sec. 35 and North Ave. I.

R. Edwin Ibbetson to L.A. Co.  
D: 6158, D: 6448-115

D.N. & Nora B. Copeland to L.A. Co.  
D: 24-198, D: 6448-115

Daniel A. & Fannie Burger to L.A. Co.  
D: 24-195, D: 6423-309

R. Edwin Ibbetson to L.A. Co.  
D: 24-198, D: 6448-115

R. Edwin Ibbetson to L.A. Co.  
D: 24-196, D: 6442-200

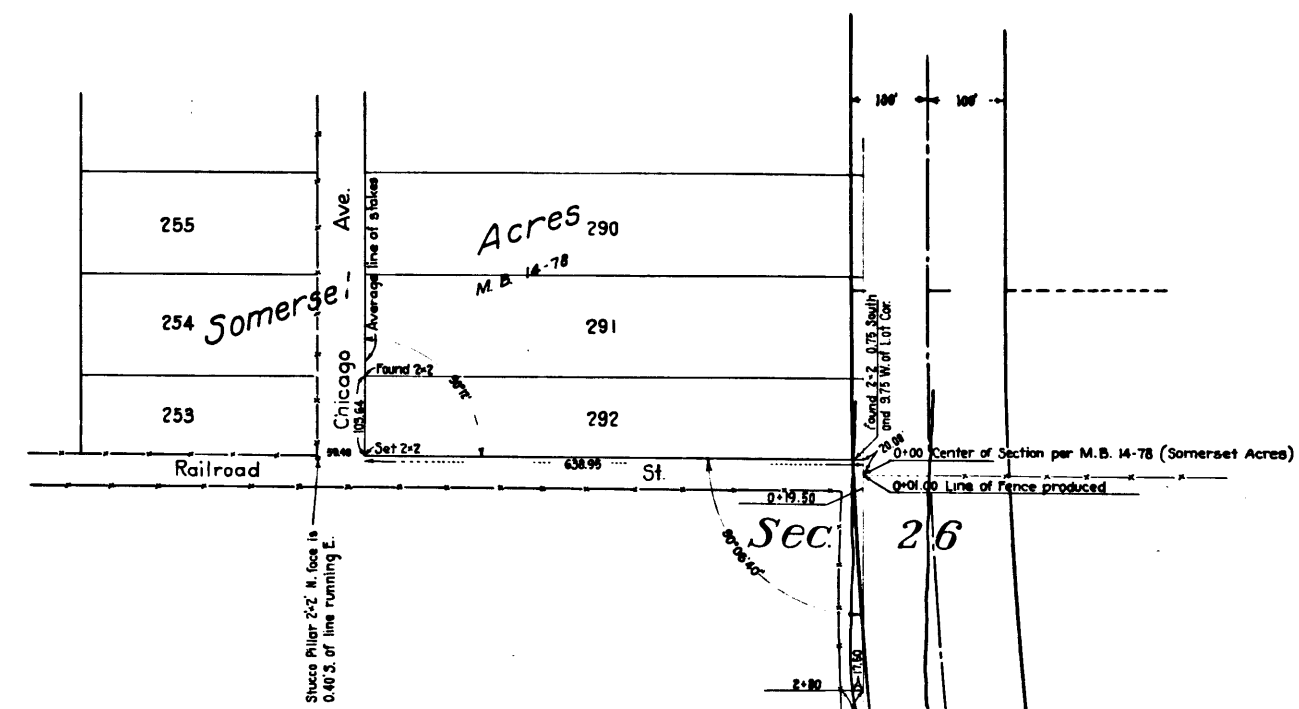
Stern Realty Co. to L.A. Co.  
D: 24-196, D: 6442-200

Lincoln Thornton to L.A. Co.  
D: 24-195, D: 6443-182

James E. & Emma C. Shores to L.A. Co.  
D: 24-196, D: 6442-200  
E.B. & Viola J. Barnes to L.A. Co. D: 24-196, D: 6442-200  
L.A.T. & S.B. Trustees D: 24-197, D: 6447-205  
Lester F. & Cam Buck to L.A. Co.  
D: 24-196, D: 6442-200  
Frank W. & Effie B. Foster to L.A. Co.  
D: 24-196, D: 6442-200

CS 7580  
A 1 OF A 3





**MAP**  
 of  
**SECTION 35**  
 AND A PORTION OF  
**SECTION 26**  
 T. 3 S. R. 12 W.  
 IVORY B. NOBLE COUNTY SURVEYOR  
 February 1909 P. B. 33-26.  
 COUNTY SURVEYORS MAP No 7580 Scale lin. = 150 feet.

*Road north and south through Secs. 26 & 35  
 to be called PALO VERDE AVE.*

Note: True bearings obtained by solar observation.

F.M. 16282  
 First St changed to Orangethorpe Ave. D. 49-95

Traced from Original by R.F. Steen, March 1933  
 Checked by E. Poggione.

INDEX 33

CS	7	5	8	0
A 3 OF A 3				

