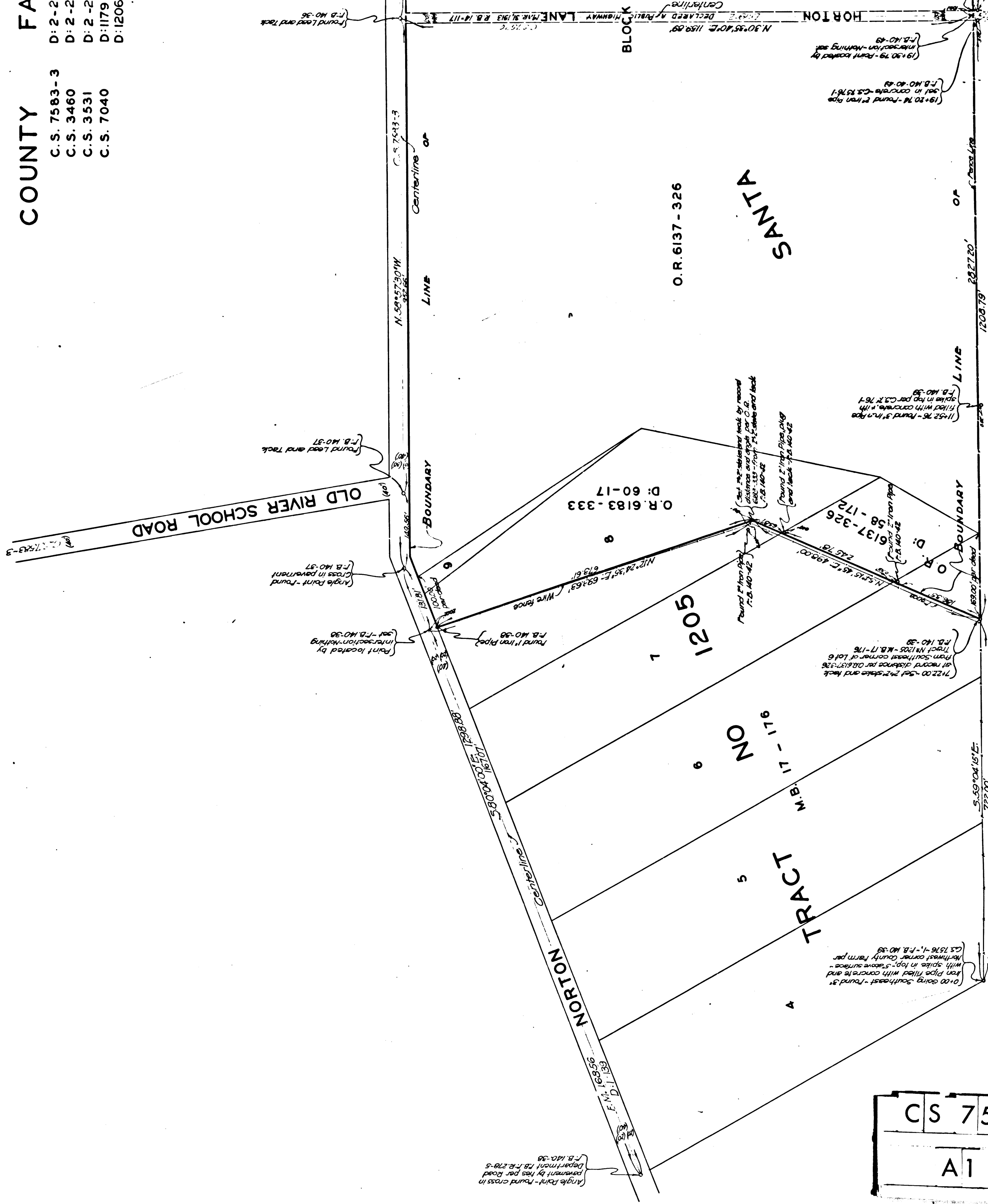


COUNTY FA

C.S. 7583-3
D: 2-2
C.S. 3460
D: 2-2
C.S. 3531
D: 1179
C.S. 7040
D: 1206



PROPERTY
L.A. COUNTY
C.S. 7583
C.S. 7576
C.S. 6764

CS	7583	SHT. 7
A1 OF A3		

T12 M3 11757
 W.P. 214-47-48

The 3/4" lines of this street were formerly shown inaccuracy as 1/2" each side of Center-Line. They have been changed (Dec. 1943) to show the status of the 3/4" as it now is the line. This map was made (1947) Original. By Line per C.S. 68537

QUILL DRIVE
 DOWNEY COMPTON ROAD

Set 2" Iron Pipe with Brass cap by proportion between Dives Ave and College Ave - Brass cap marked F.B. 140-43
 This monument is set 3.90' N. 32° 20' 27" E. of Property Corner.

CS 7583 SHT. 7
 A 2 OF A 3

FARM
 3 D: 2-207
 D: 2-209
 D: 2-213
 D: 1179-203
 D: 1206-90

PROPERTY OF
 L.A. COUNTY
 O.R. 6137 - 326
 D: 58-172 O.R. 6137-326
 D: 2261 - 289
 D: 6592 - 71

SEE 153-1
 C.S.B.
 D: 4544-88
 D: 4548-82

ASSOCIATION

LANE MAR 31/1913 P.B. 14-117
 C.S. 7576
 N. 30° 35' 40" E. 1159.89'

AVENUE

LAND

N. 58° 54' 15" W. 755.57'

N. 58° 47' 50" W. 771.90'

BERRYMAN HEWITT

BOUNDARY LINE

Center-Line of Imperial Highway per C.S. B-1253

Found 3" Iron Pipe filled with concrete with spike in top 5" below
 F.B. 37-52 - F.B. 140-34-47

Set 2" Iron Pipe with brass cap by proportion between 3" Iron Pipe at Dives Ave and centerline of College Ave - Brass cap marked F.B. 140-46
 This monument removed in paving street

Found 3" Iron Pipe filled with concrete with spike in top 6" above surface - C.S. 7576 - F.B. 140-48

GERTRUDES

O.R. 6137-326

BLOCK G
 PROPERTY OF
 L.A. COUNTY
 D: 4063-57
 D: 10-264
 D: 833-1
 C.S. 7583

BLOCK C

HORTON
 N. 30° 35' 40" E. 1159.89'

S. 32° 19' 30" W. 1158.36'

N. 58° 54' 15" W. 755.57'

N. 58° 47' 50" W. 771.90'

PROPERTY OF
 L.A. COUNTY
 3 D: 293-100
 6 R.B. 2-1
 4 R.B. 13-10

(19-30-79 - Point located by intersection - nothing set F.B. 140-49)

(19-40-00 - found 12 1/2" corner fence post F.B. 140-40)

(19-40-74 - found 2" Iron Pipe set in concrete - C.S. 7576-1 F.B. 140-40-49)

Pipe filled with concrete per C.S. 7576-1 - F.B. 140-41

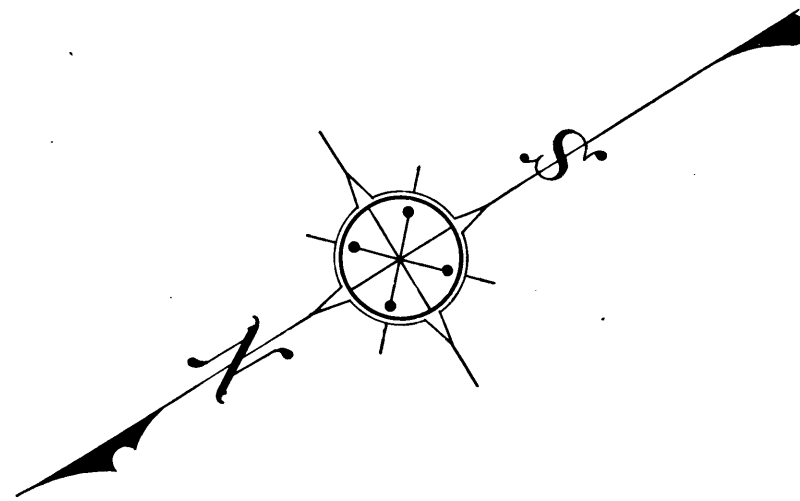
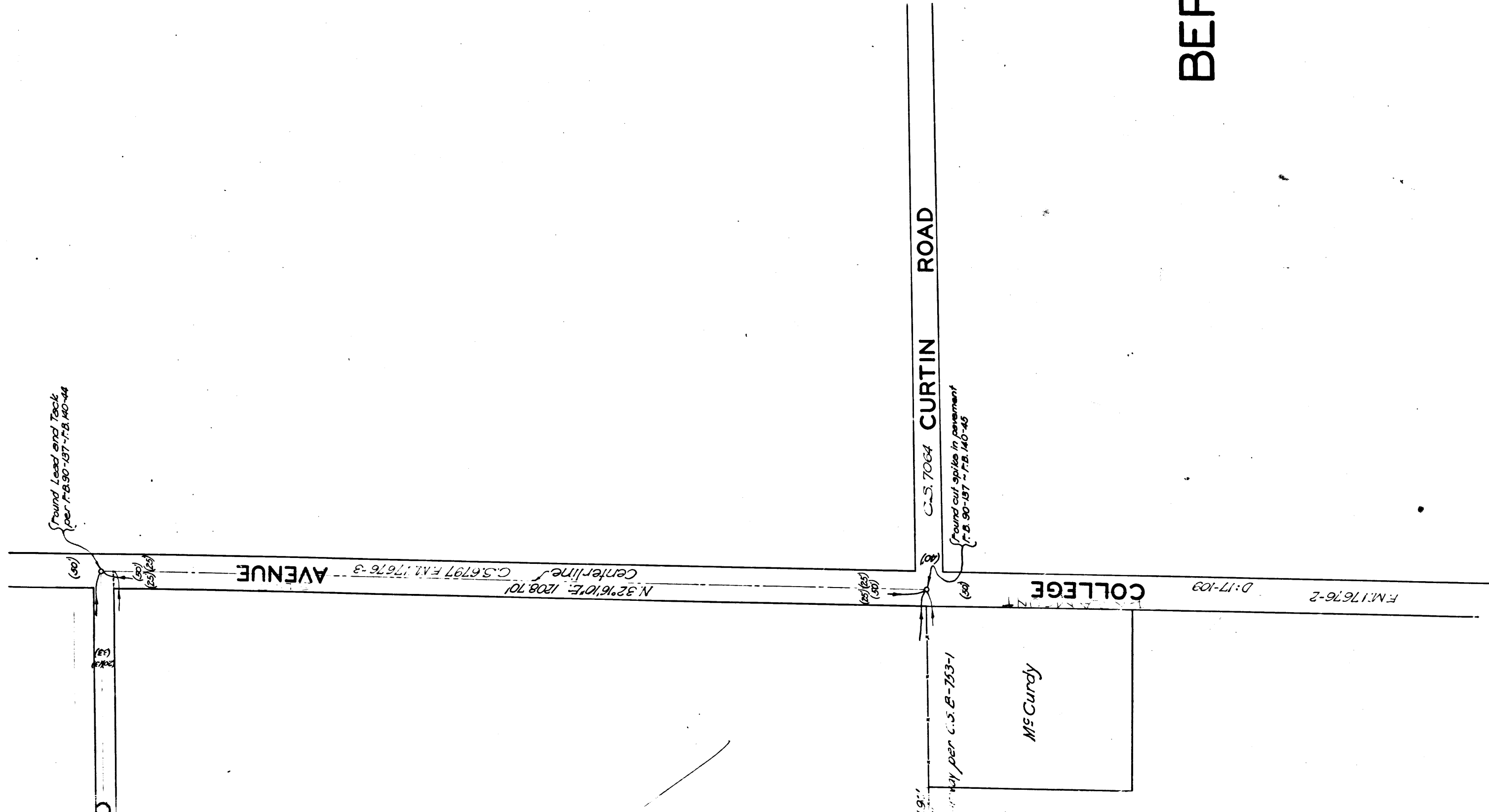
BERRYMAN HEWITT

PURCHASE

BOUNDARY LINE

Center-Line of Imperial Highway per C.S. B-1253

3
6
4



MAP OF
THAT PORTION OF THE COUNTY FARM
 KNOWN AS THE
BERRYMAN AND HEWITT PURCHASE
 BEING A PORTION OF BLOCKS C AND E OF THE
RANCHO SANTA GERTRUDES
 ACQUIRED BY DEED O.R. 6137-326

COUNTY SURVEYORS MAP NO 7583.
 SHEET 7 OF 7 SHEETS.

SCALE - 1 INCH = 100 FT.

J.E. ROCKHOLD - COUNTY SURVEYOR.
 SURVEYED JUNE, 1927.

BEARINGS ARE BASED ON THE BEARING OF
 NORTON AVENUE PER C.S. 7583-3.

F.B. 140 - 34 - 49.

FIELD WORK BY - P.W. ATKINS
 OFFICE WORK BY - R.W. STEWART
 CHECKED BY - K.B. HIGGINS

SHT. 32
 County Farm named Rancho Los Amigos - D. 49-206
 Revised Dec. 1943 - K.H.H.

CS	7583	SHT. 7
A 3	OF	A 3