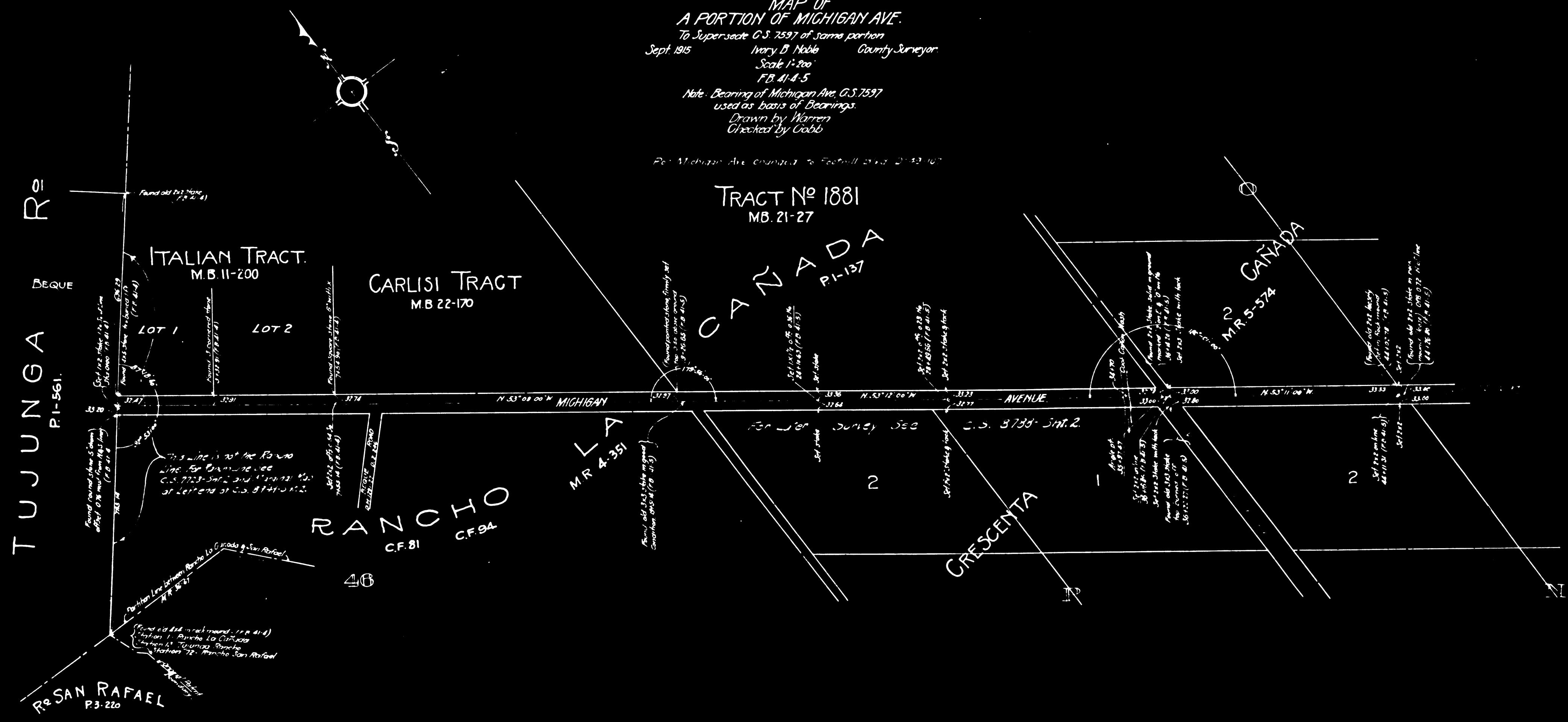


MAP OF  
A PORTION OF MICHIGAN AVE.  
To supersede C.S. 7597 of same portion  
Sept. 1915 Ivory B. Noble County Surveyor  
Scale 1"=200'  
F.B. 41-4-5  
Note: Bearing of Michigan Ave. C.S. 7597  
used as basis of Bearings.  
Drawn by Warren  
Checked by Cobb

For Michigan Ave. changed to Footwall track 21-33-10"



CS 7597-5