

L.S. 3-20

- E:109-61, O.R. 5-902
- E:99-177, O.R. 101-570
- E:17-140, C.R. D402-532
- E:161-184, C.R. 52747-355
- E:158-47, O.R. 51054-82
- E:158-46, O.R. 51033-190 2
- E:158-47, O.R. 51054-72

FIRESTONE F.M.

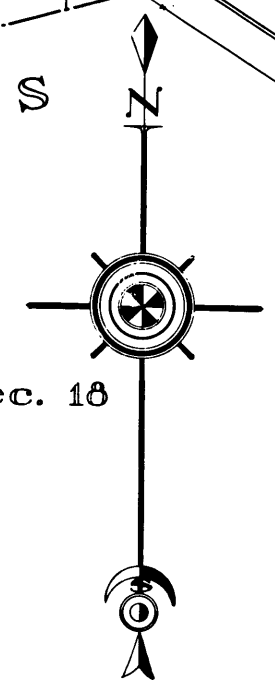
12029-A BLVD.

Healy Line as per F.M. 16164

R^o Santa Gertrudes
 R^o Los Coyotes

F.M. 15313
 F.M. 16164
 M.R. 15-34
 M.R. 32-18
 P.I. 156

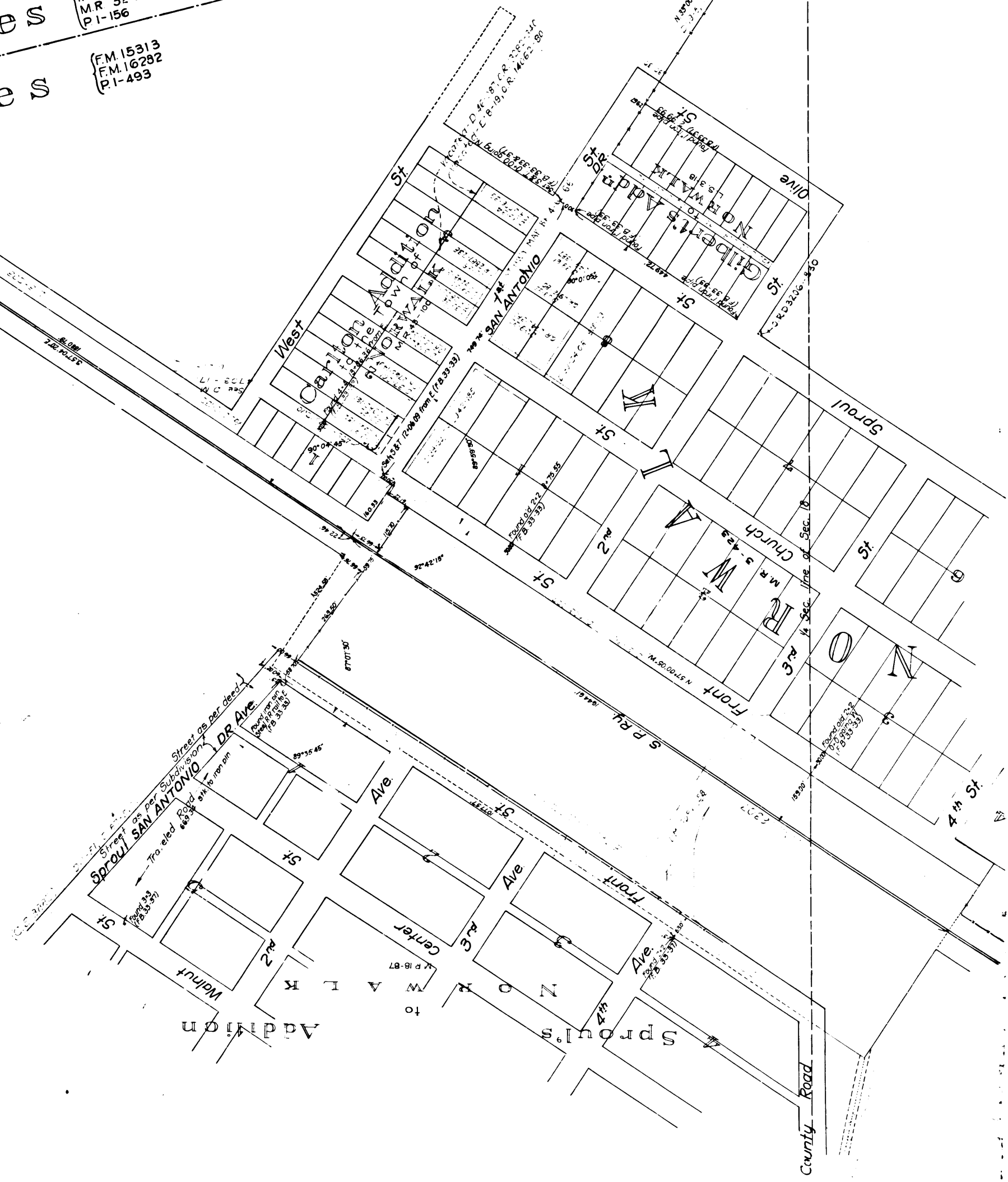
F.M. 15313
 F.M. 16292
 P.I. 493

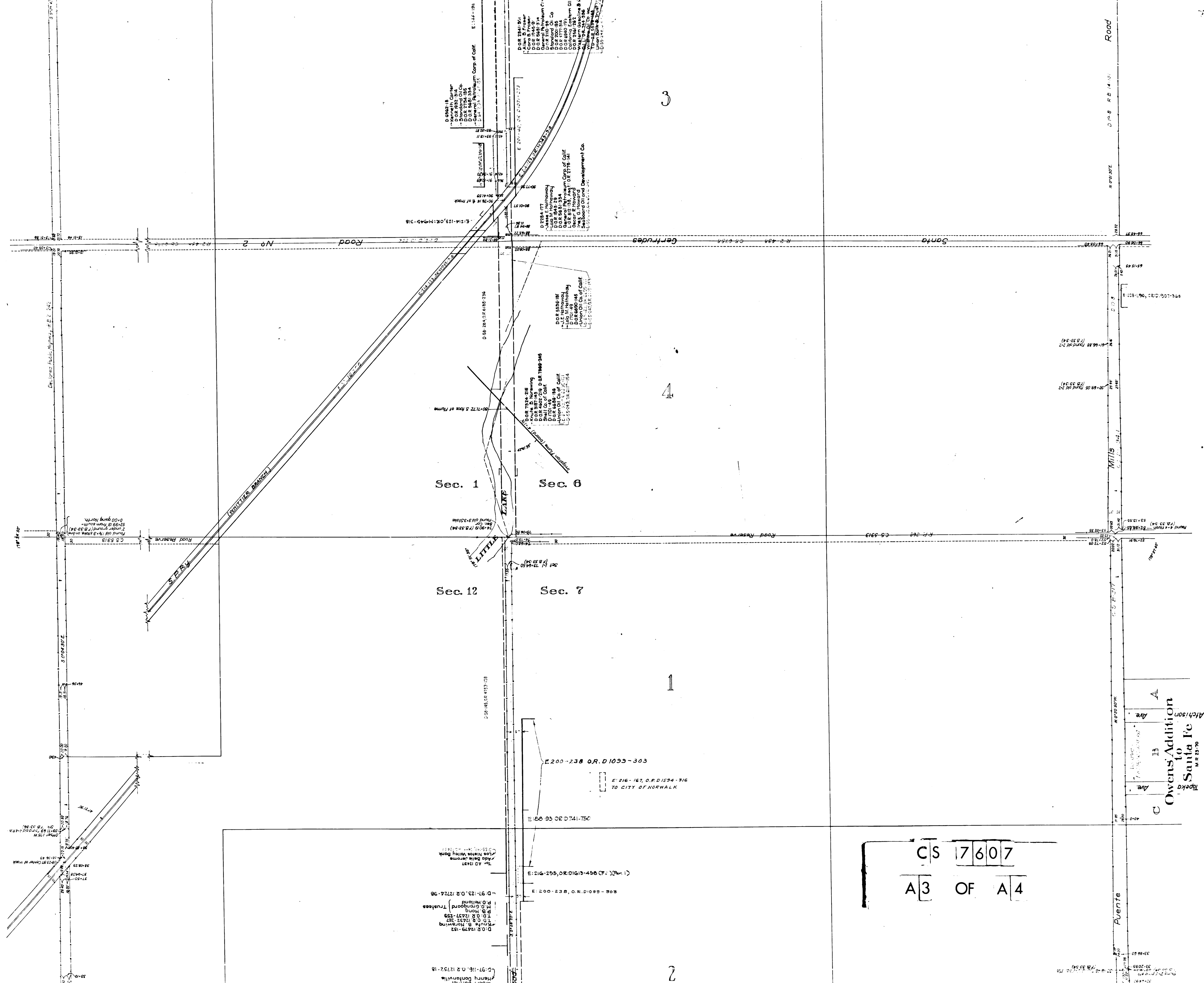


Sec. 13

Sec. 18

CS 7607
 A1 OF A4





CS 7607
A3 OF A4

Owens Addition
to
Santa Fe
M.R. 23-70

D.O.R. 1279-53
Rufus B. Norwing
Trustees
TO O.R. 1247-53
TO O.R. 1247-53
Rufus B. Norwing
Trustees
D-97-123, O.R. 12724-96
To: A.D. 1247
Mrs. Helen Wiley Cook
Add Belle Jerome
108 North Wiley Cook
D-97-116, O.R. 12757-18
Henry Fontaine
D-97-123, O.R. 12724-96
Rufus B. Norwing
Trustees
TO O.R. 1247-53
TO O.R. 1247-53
Rufus B. Norwing
Trustees
D-97-123, O.R. 12724-96
To: A.D. 1247
Mrs. Helen Wiley Cook
Add Belle Jerome
108 North Wiley Cook
D-97-116, O.R. 12757-18
Henry Fontaine
D-97-123, O.R. 12724-96
Rufus B. Norwing
Trustees
TO O.R. 1247-53
TO O.R. 1247-53
Rufus B. Norwing
Trustees
D-97-123, O.R. 12724-96
To: A.D. 1247
Mrs. Helen Wiley Cook
Add Belle Jerome
108 North Wiley Cook

E 200-238 O.R. D 1065-303
E 216-167, O.R. D 1594-916
TO CITY OF NORWALK
E 200-93 O.R. D 741-750

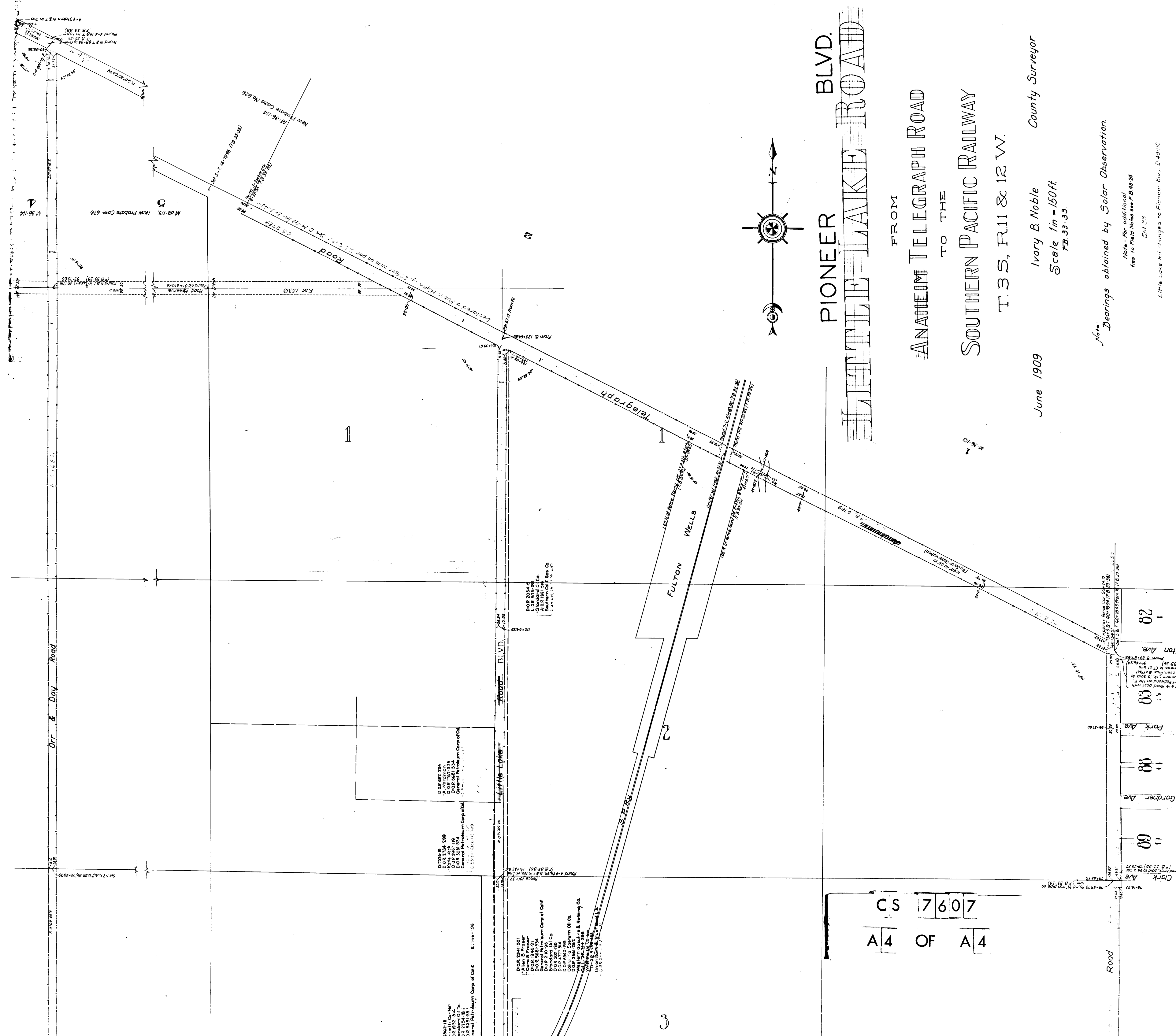
D.O.R. 7284-316
Katie D. Norwing
TO O.R. 7292-210 O.R. 7468-245
Small Co. of Calif.
Union Oil Co. of Calif.
D.O.R. 6846-188
D.O.R. 6846-188
D.O.R. 6846-188

D.O.R. 8450-117
L.H. V. Hall
D.O.R. 8450-117
D.O.R. 8450-117

Alamo Highway
D.O.R. 8450-117
D.O.R. 8450-117
D.O.R. 8450-117
D.O.R. 8450-117
D.O.R. 8450-117
D.O.R. 8450-117
D.O.R. 8450-117

D.O.R. 118-18
Union Oil Co. of Calif.
D.O.R. 118-18
D.O.R. 118-18
D.O.R. 118-18
D.O.R. 118-18
D.O.R. 118-18

D.O.R. 2841-161
Allen B. Fraser
D.O.R. 2841-161
D.O.R. 2841-161
D.O.R. 2841-161
D.O.R. 2841-161
D.O.R. 2841-161
D.O.R. 2841-161



PIONEER BLVD.
LITTLE LAKE ROAD

FROM
ANATEM TELEGRAPH ROAD
TO THE
SOUTHERN PACIFIC RAILWAY
T. 3 S., R. 11 & 12 W.

June 1909
Ivory B. Noble
County Surveyor

Scale 1 in = 150 ft.
FB-33-33.

Notes:
Bearings obtained by Solar Observation

Note - For additional
Info. to field notes see FB-48-24
Sht. 33

Little Lake Rd. changed to Pioneer Blvd. E. 43-110

Townsite of Santa Fe Springs
Fulton Wells Health & Pleasure Resort

A4 OF A4
CS 7607

Clark Ave
Gardner Ave
Park Ave
Fulton Ave

- D.O.R. 2341-301
- Camp & Foster
- D.O.R. 2341-302
- D.O.R. 2341-303
- D.O.R. 2341-304
- D.O.R. 2341-305
- D.O.R. 2341-306
- D.O.R. 2341-307
- D.O.R. 2341-308
- D.O.R. 2341-309
- D.O.R. 2341-310
- D.O.R. 2341-311
- D.O.R. 2341-312
- D.O.R. 2341-313
- D.O.R. 2341-314
- D.O.R. 2341-315
- D.O.R. 2341-316
- D.O.R. 2341-317
- D.O.R. 2341-318
- D.O.R. 2341-319
- D.O.R. 2341-320
- D.O.R. 2341-321
- D.O.R. 2341-322
- D.O.R. 2341-323
- D.O.R. 2341-324
- D.O.R. 2341-325
- D.O.R. 2341-326
- D.O.R. 2341-327
- D.O.R. 2341-328
- D.O.R. 2341-329
- D.O.R. 2341-330
- D.O.R. 2341-331
- D.O.R. 2341-332
- D.O.R. 2341-333
- D.O.R. 2341-334
- D.O.R. 2341-335
- D.O.R. 2341-336
- D.O.R. 2341-337
- D.O.R. 2341-338
- D.O.R. 2341-339
- D.O.R. 2341-340
- D.O.R. 2341-341
- D.O.R. 2341-342
- D.O.R. 2341-343
- D.O.R. 2341-344
- D.O.R. 2341-345
- D.O.R. 2341-346
- D.O.R. 2341-347
- D.O.R. 2341-348
- D.O.R. 2341-349
- D.O.R. 2341-350
- D.O.R. 2341-351
- D.O.R. 2341-352
- D.O.R. 2341-353
- D.O.R. 2341-354
- D.O.R. 2341-355
- D.O.R. 2341-356
- D.O.R. 2341-357
- D.O.R. 2341-358
- D.O.R. 2341-359
- D.O.R. 2341-360
- D.O.R. 2341-361
- D.O.R. 2341-362
- D.O.R. 2341-363
- D.O.R. 2341-364
- D.O.R. 2341-365
- D.O.R. 2341-366
- D.O.R. 2341-367
- D.O.R. 2341-368
- D.O.R. 2341-369
- D.O.R. 2341-370
- D.O.R. 2341-371
- D.O.R. 2341-372
- D.O.R. 2341-373
- D.O.R. 2341-374
- D.O.R. 2341-375
- D.O.R. 2341-376
- D.O.R. 2341-377
- D.O.R. 2341-378
- D.O.R. 2341-379
- D.O.R. 2341-380
- D.O.R. 2341-381
- D.O.R. 2341-382
- D.O.R. 2341-383
- D.O.R. 2341-384
- D.O.R. 2341-385
- D.O.R. 2341-386
- D.O.R. 2341-387
- D.O.R. 2341-388
- D.O.R. 2341-389
- D.O.R. 2341-390
- D.O.R. 2341-391
- D.O.R. 2341-392
- D.O.R. 2341-393
- D.O.R. 2341-394
- D.O.R. 2341-395
- D.O.R. 2341-396
- D.O.R. 2341-397
- D.O.R. 2341-398
- D.O.R. 2341-399
- D.O.R. 2341-400

D.O.R. 2341-299
A. W. W. W. W.
D.O.R. 2341-300
D.O.R. 2341-301
D.O.R. 2341-302
D.O.R. 2341-303
D.O.R. 2341-304
D.O.R. 2341-305
D.O.R. 2341-306
D.O.R. 2341-307
D.O.R. 2341-308
D.O.R. 2341-309
D.O.R. 2341-310
D.O.R. 2341-311
D.O.R. 2341-312
D.O.R. 2341-313
D.O.R. 2341-314
D.O.R. 2341-315
D.O.R. 2341-316
D.O.R. 2341-317
D.O.R. 2341-318
D.O.R. 2341-319
D.O.R. 2341-320
D.O.R. 2341-321
D.O.R. 2341-322
D.O.R. 2341-323
D.O.R. 2341-324
D.O.R. 2341-325
D.O.R. 2341-326
D.O.R. 2341-327
D.O.R. 2341-328
D.O.R. 2341-329
D.O.R. 2341-330
D.O.R. 2341-331
D.O.R. 2341-332
D.O.R. 2341-333
D.O.R. 2341-334
D.O.R. 2341-335
D.O.R. 2341-336
D.O.R. 2341-337
D.O.R. 2341-338
D.O.R. 2341-339
D.O.R. 2341-340
D.O.R. 2341-341
D.O.R. 2341-342
D.O.R. 2341-343
D.O.R. 2341-344
D.O.R. 2341-345
D.O.R. 2341-346
D.O.R. 2341-347
D.O.R. 2341-348
D.O.R. 2341-349
D.O.R. 2341-350
D.O.R. 2341-351
D.O.R. 2341-352
D.O.R. 2341-353
D.O.R. 2341-354
D.O.R. 2341-355
D.O.R. 2341-356
D.O.R. 2341-357
D.O.R. 2341-358
D.O.R. 2341-359
D.O.R. 2341-360
D.O.R. 2341-361
D.O.R. 2341-362
D.O.R. 2341-363
D.O.R. 2341-364
D.O.R. 2341-365
D.O.R. 2341-366
D.O.R. 2341-367
D.O.R. 2341-368
D.O.R. 2341-369
D.O.R. 2341-370
D.O.R. 2341-371
D.O.R. 2341-372
D.O.R. 2341-373
D.O.R. 2341-374
D.O.R. 2341-375
D.O.R. 2341-376
D.O.R. 2341-377
D.O.R. 2341-378
D.O.R. 2341-379
D.O.R. 2341-380
D.O.R. 2341-381
D.O.R. 2341-382
D.O.R. 2341-383
D.O.R. 2341-384
D.O.R. 2341-385
D.O.R. 2341-386
D.O.R. 2341-387
D.O.R. 2341-388
D.O.R. 2341-389
D.O.R. 2341-390
D.O.R. 2341-391
D.O.R. 2341-392
D.O.R. 2341-393
D.O.R. 2341-394
D.O.R. 2341-395
D.O.R. 2341-396
D.O.R. 2341-397
D.O.R. 2341-398
D.O.R. 2341-399
D.O.R. 2341-400

D.O.R. 2054-4
S. W. W. W.
D.O.R. 2054-5
D.O.R. 2054-6
D.O.R. 2054-7
D.O.R. 2054-8
D.O.R. 2054-9
D.O.R. 2054-10
D.O.R. 2054-11
D.O.R. 2054-12
D.O.R. 2054-13
D.O.R. 2054-14
D.O.R. 2054-15
D.O.R. 2054-16
D.O.R. 2054-17
D.O.R. 2054-18
D.O.R. 2054-19
D.O.R. 2054-20
D.O.R. 2054-21
D.O.R. 2054-22
D.O.R. 2054-23
D.O.R. 2054-24
D.O.R. 2054-25
D.O.R. 2054-26
D.O.R. 2054-27
D.O.R. 2054-28
D.O.R. 2054-29
D.O.R. 2054-30
D.O.R. 2054-31
D.O.R. 2054-32
D.O.R. 2054-33
D.O.R. 2054-34
D.O.R. 2054-35
D.O.R. 2054-36
D.O.R. 2054-37
D.O.R. 2054-38
D.O.R. 2054-39
D.O.R. 2054-40
D.O.R. 2054-41
D.O.R. 2054-42
D.O.R. 2054-43
D.O.R. 2054-44
D.O.R. 2054-45
D.O.R. 2054-46
D.O.R. 2054-47
D.O.R. 2054-48
D.O.R. 2054-49
D.O.R. 2054-50
D.O.R. 2054-51
D.O.R. 2054-52
D.O.R. 2054-53
D.O.R. 2054-54
D.O.R. 2054-55
D.O.R. 2054-56
D.O.R. 2054-57
D.O.R. 2054-58
D.O.R. 2054-59
D.O.R. 2054-60
D.O.R. 2054-61
D.O.R. 2054-62
D.O.R. 2054-63
D.O.R. 2054-64
D.O.R. 2054-65
D.O.R. 2054-66
D.O.R. 2054-67
D.O.R. 2054-68
D.O.R. 2054-69
D.O.R. 2054-70
D.O.R. 2054-71
D.O.R. 2054-72
D.O.R. 2054-73
D.O.R. 2054-74
D.O.R. 2054-75
D.O.R. 2054-76
D.O.R. 2054-77
D.O.R. 2054-78
D.O.R. 2054-79
D.O.R. 2054-80
D.O.R. 2054-81
D.O.R. 2054-82
D.O.R. 2054-83
D.O.R. 2054-84
D.O.R. 2054-85
D.O.R. 2054-86
D.O.R. 2054-87
D.O.R. 2054-88
D.O.R. 2054-89
D.O.R. 2054-90
D.O.R. 2054-91
D.O.R. 2054-92
D.O.R. 2054-93
D.O.R. 2054-94
D.O.R. 2054-95
D.O.R. 2054-96
D.O.R. 2054-97
D.O.R. 2054-98
D.O.R. 2054-99
D.O.R. 2054-100