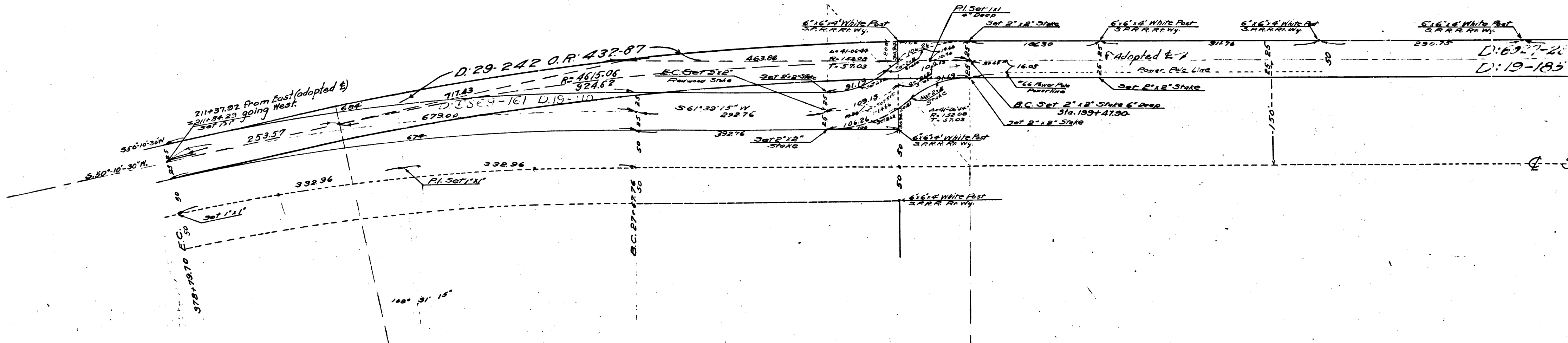


Scale 1"=100'



CS	7	6	3	6	SHT.	2
A	1	OF	A	2		

MAP
 Showing Change in Location of the
SAUGUS AND VENTURA ROAD
 AT CASTAIC STATION

March 1914

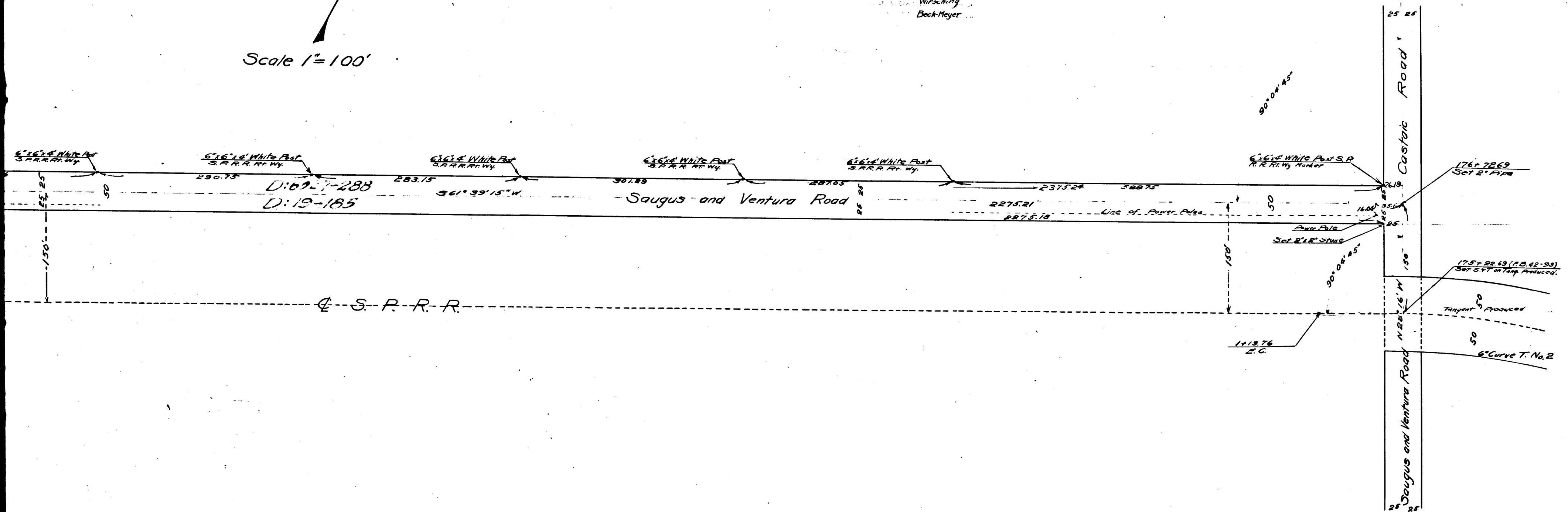
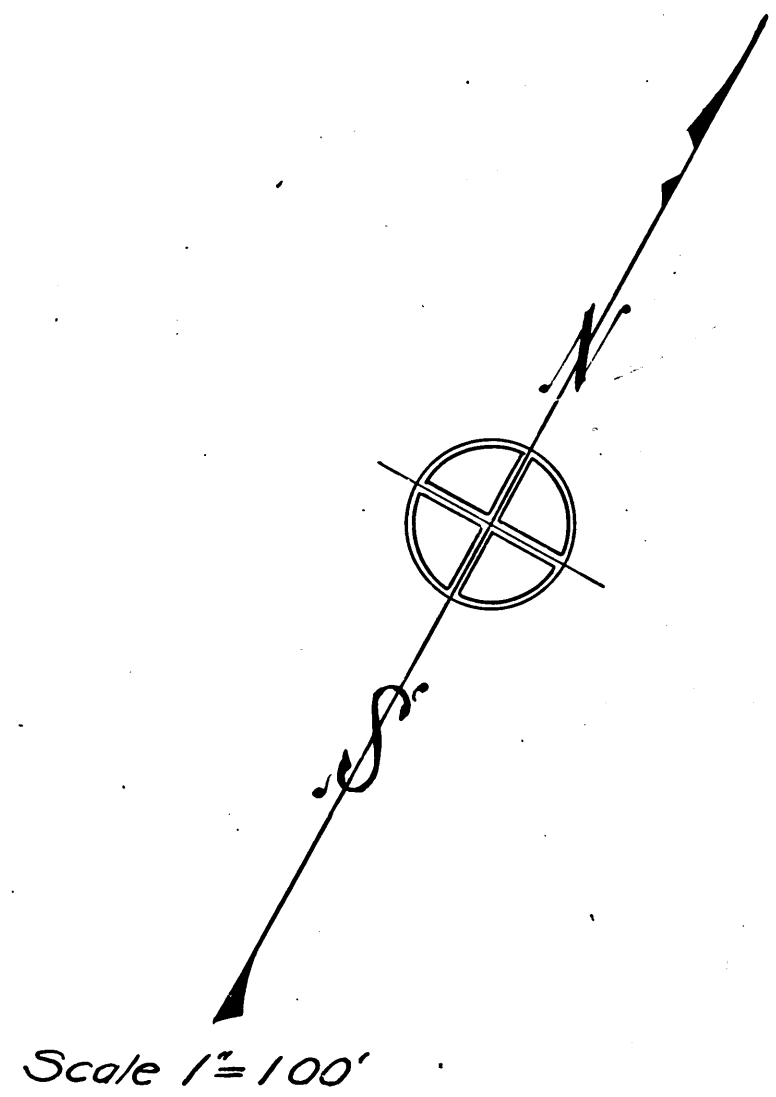
F.B. 42-910.93
 C.S. - No. 7636-2

I. B. Noble

County Surveyor

LM. 63

Book, Steggs,
 Wirching,
 Beck-Meyer



C	S	7	6	3	6	SHI.	2
A	2	OF	A	2			