

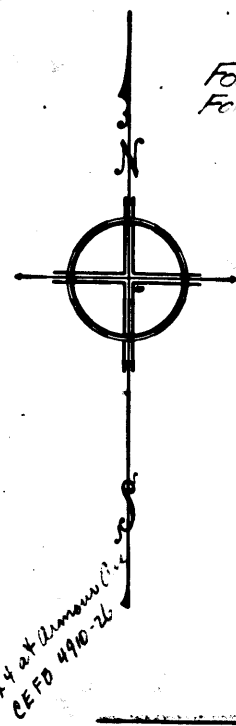
MAP OF PORTIONS OF  
HARRIMAN AVE.,  
RANDOLPH AVE.,  
CARNEGIE ST.,  
& EDISON ST.

LOS ANGELES CO., CAL  
March 1910 Ivory B. Noble County Surveyor

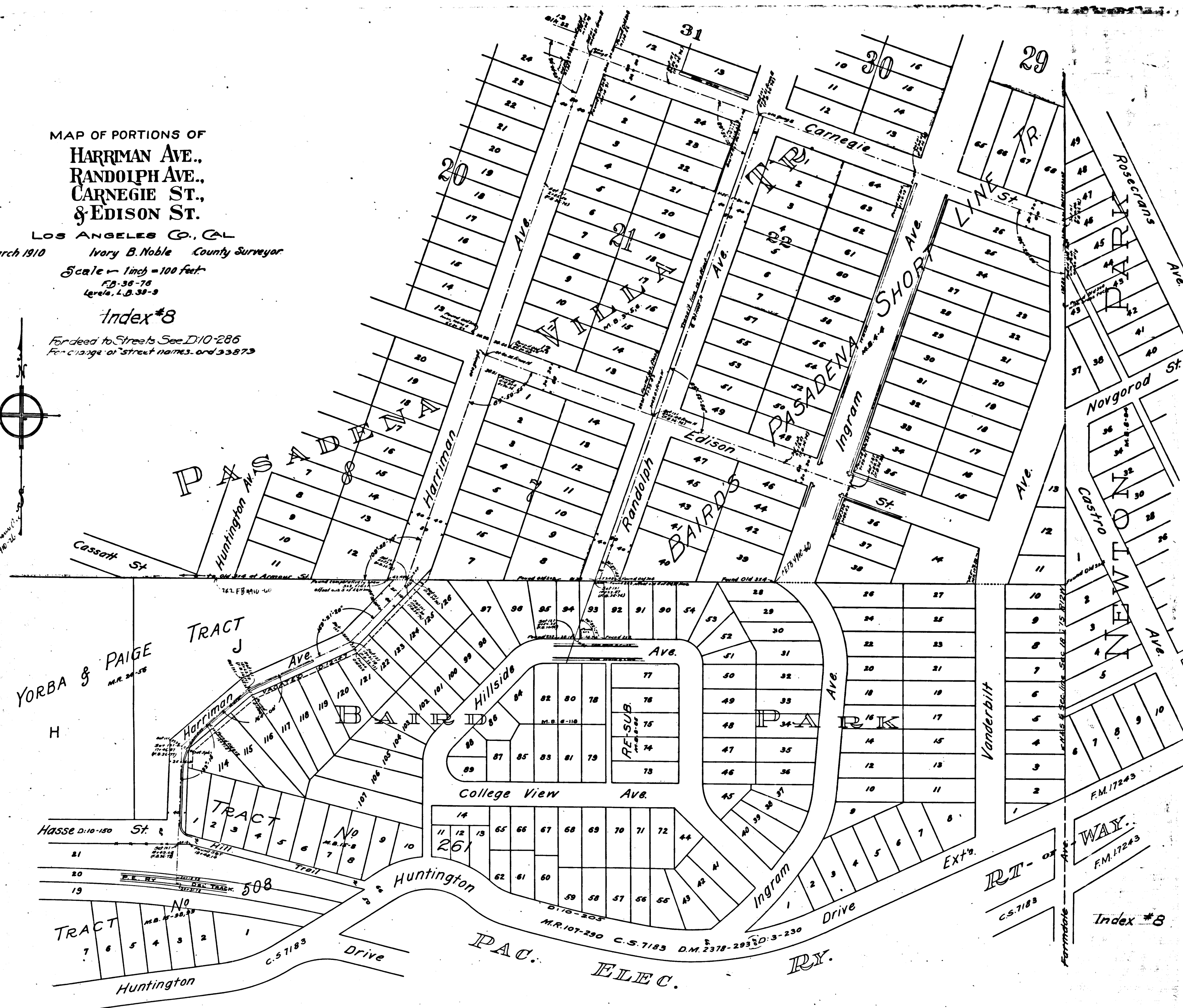
Scale - 1 inch = 100 feet  
F.B. 36-76  
Lords, L.B. 38-9

Index #8

For deed to Streets See D10-286  
For change of street names, ord 33873



2244 of Huntington St.  
L.F.D. 410-26



YORBA & PAIGE  
M.R. 24-58

H

Hasse D-10-180 St.

TRACT  
M.B. 49-30, 33

Huntington Drive

Trail

Huntington Drive

PAC.

ELEC.

RY.

CS 7668

WAY.  
F.M. 17243

Index #8