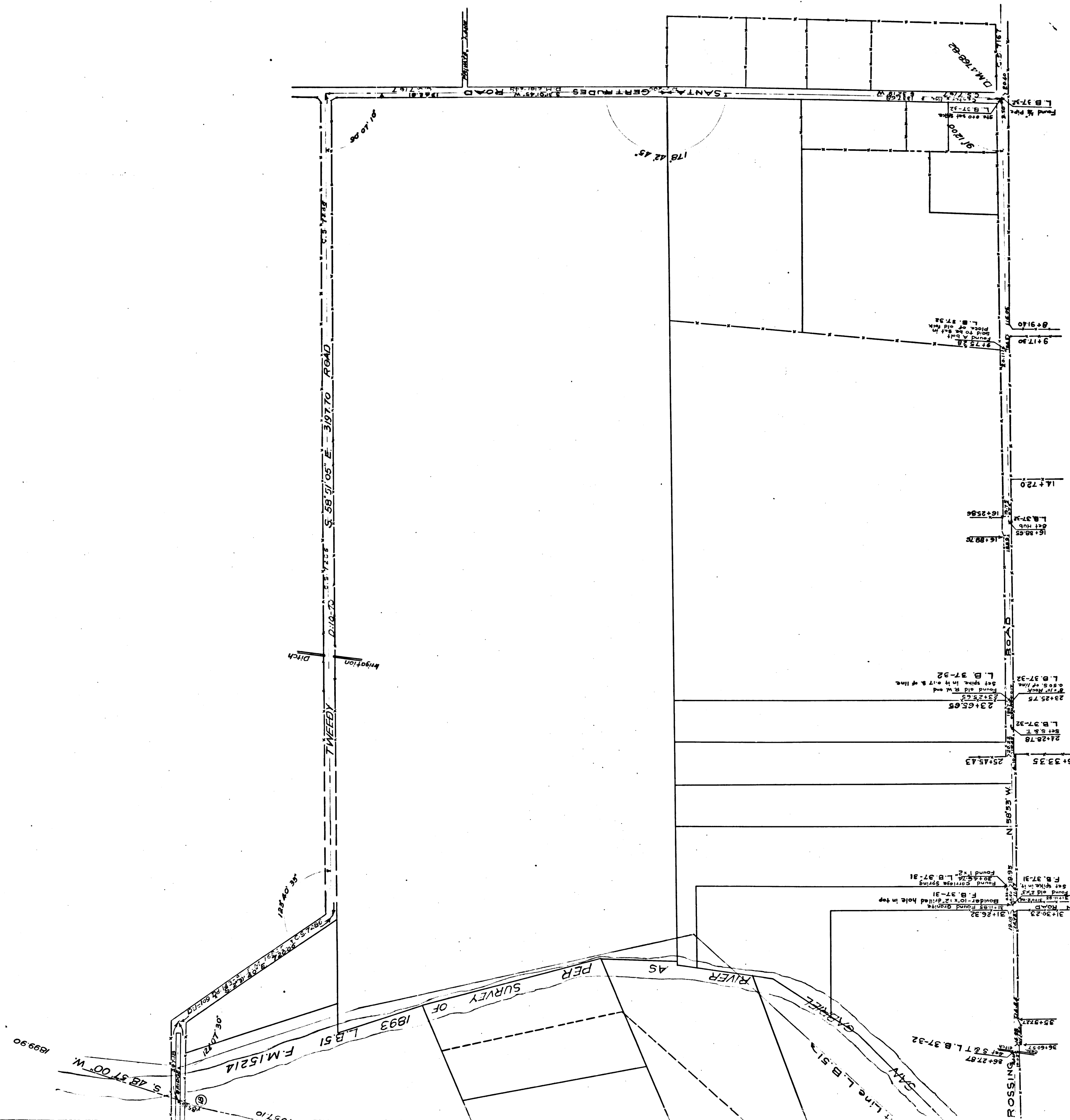
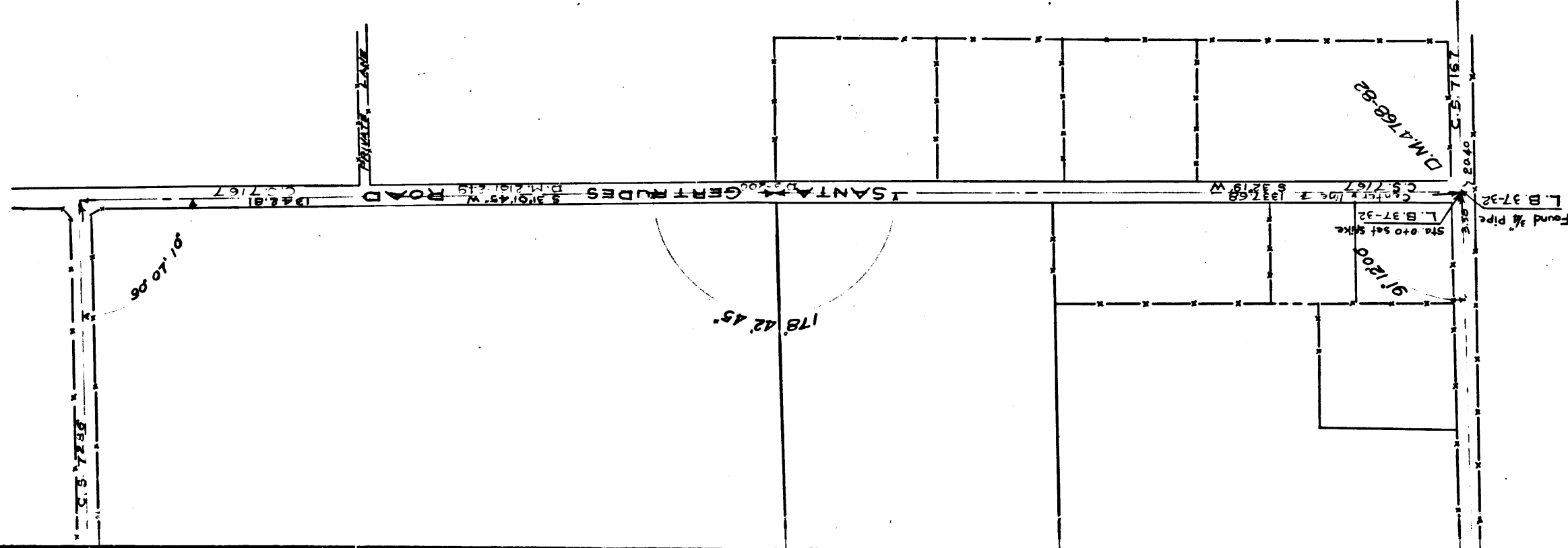
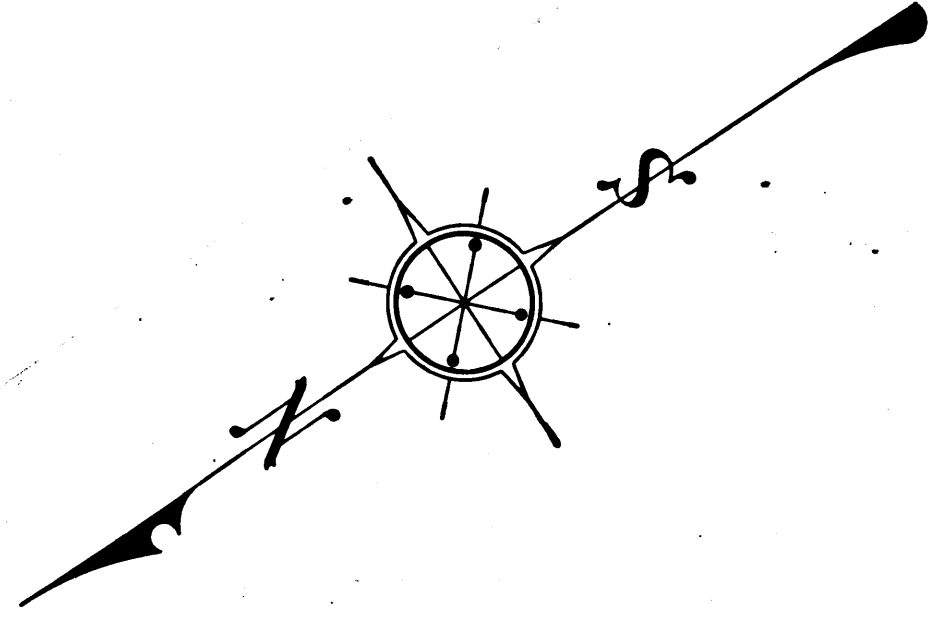


CS	7	7	0	8	SHT. 2
A	1	OF	A	3	



C	S	7	7	8	0	7	8	S	HT. 2
A 2 OF A 3									



MAP OF
OLD SAN GABRIEL RIVER
AND EASTERLY LINE OF
RANCHO SAN ANTONIO

SHOWING TIES TO ADJOINING ROAD AND PROPERTIES

MAP WORK-SEPT 1910 - IVORY B. NOBLE, COUNTY SURVEYOR

COUNTY SURVEYORS MAP NO 7708

SHEET NO 2 OF 6 SHEETS

SCALE 1/IN=200 FT.

F.B. 37-74
" " 41-18
" " 44-31
L.B. 37-31
" " 51-19
C-6-181
INCLUSIVE

I. M. 32 & 36

Jabomeria Road and Tweedy Road changed to Vernon and Downey Road D:13-76
Santa Gertrudes Rd. changed to Vernon & Downey Rd. D:13-76
Per Vernon & Downey Rd changed to Telegraph & Jabomeria Rd. D:49-75
Rancho Crossing Road changed to Clara St. D:49-75
Telegraph & Jabomeria Rd. changed to Paramount Blvd. D:49-175

C	S	7	7	0	8	SHT. 2
A	3	OF	A	3		

Retraced by Jan Lew July, 1959

Checked by R.J. Black 8-5-59