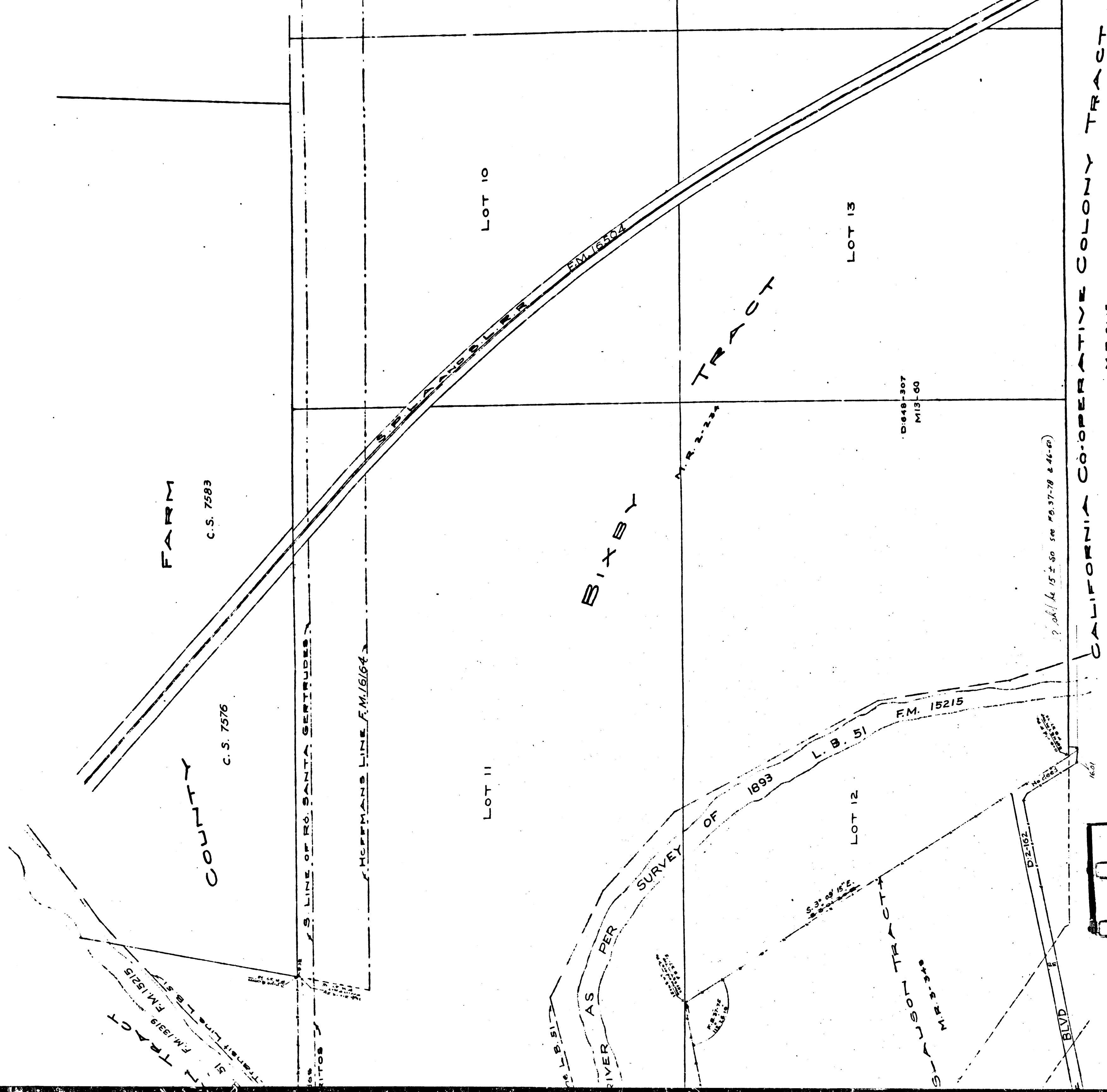


CS	7	7	0	8	SHT.	5
A	1	OF	A	3		



CS	7	7	0	8	SHT.	51
A	2	OF	A	3		

MAP OF
 OLD SAN GABRIEL RIVER
 AND EASTERLY LINE OF
 RANCHO SAN ANTONIO

SHOWING TIES TO ADJOINING ROADS AND PROPERTIES

MAP WORK SEPT. 1910

IVORY B. NOBLE COUNTY SURVEYOR

COUNTY SURVEYORS MAP NO 7708
 SHEET NO 5 OF 6 SHEETS

SCALE 1" = 200 FT.

SHEETS 1 TO 5
 INCLUSIVE {
 F B 37-74
 41-78
 44-77
 2 B 37-31
 37-29
 C 6-101

I. M. 32
 I. M. 33

Morton Road established D: 13-90
 See C. S. 6756 C. S. 3288 . F. M. 16896
 Morton Road declared 50ft wide D: 45-255

NEG. 691 Sht 5

CS	7	7	0	8	SHT.	5
A	3	OF	A	3		

Y TRACT