

Plans for STORM WATER CONDUIT ACROSS DETENTION HOME PROPERTY

June, 1911 Ivory B. Noble, County Surveyor

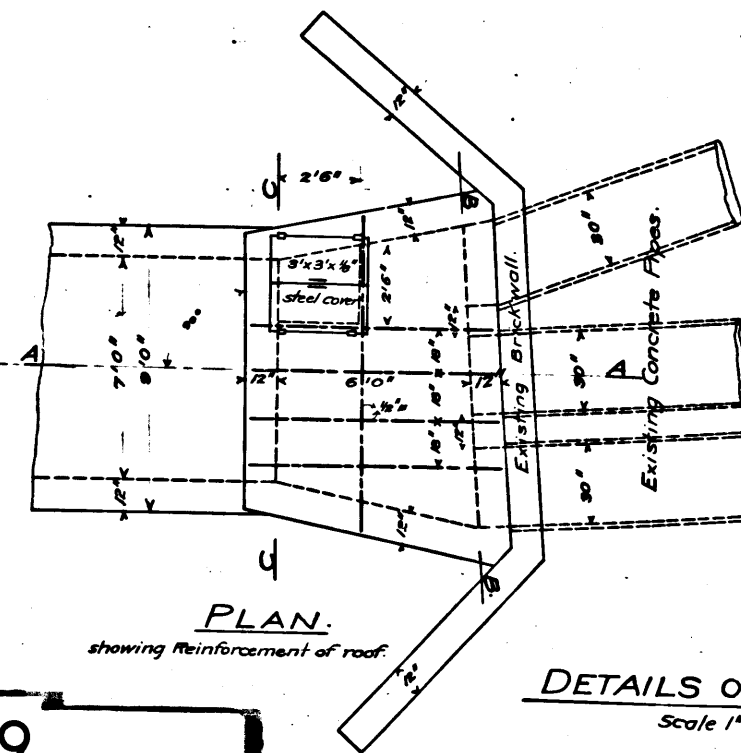
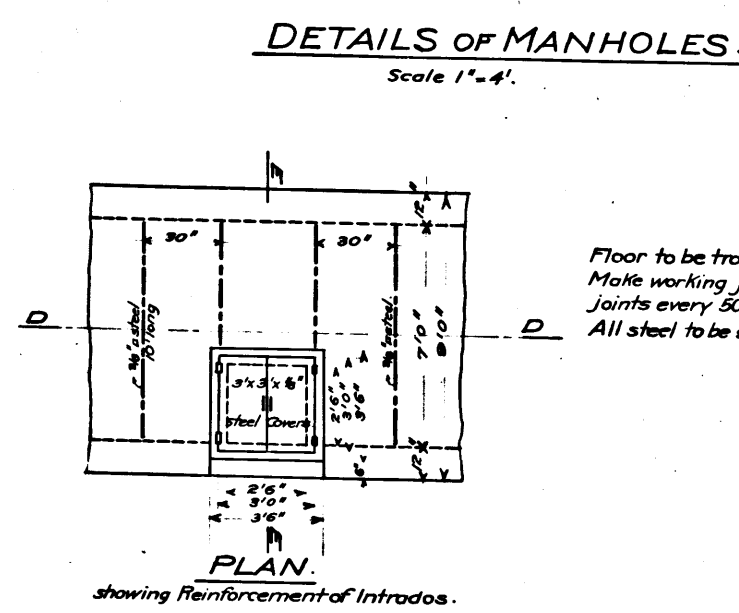
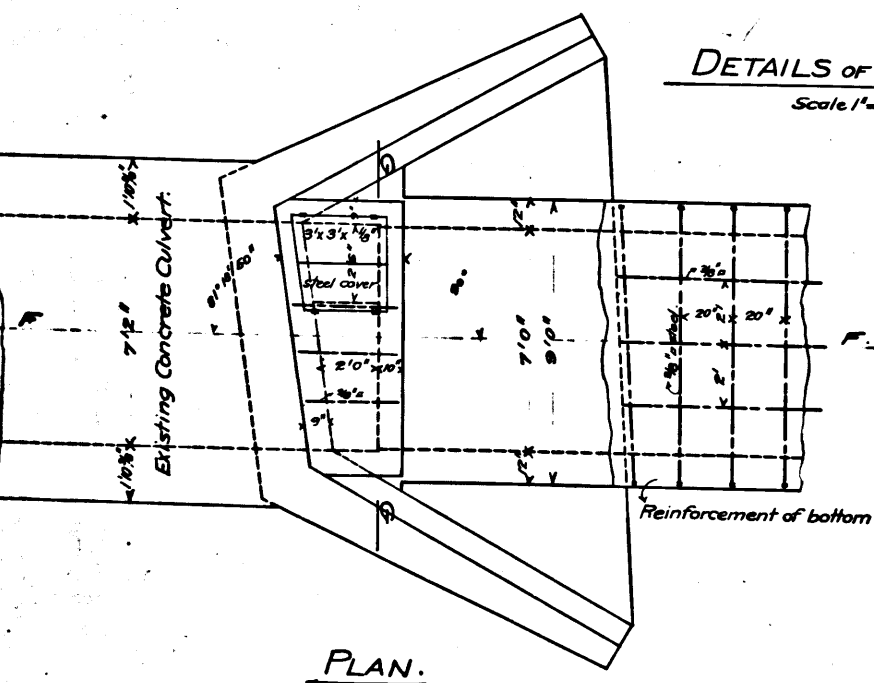
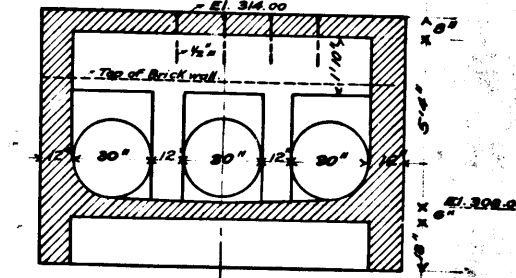
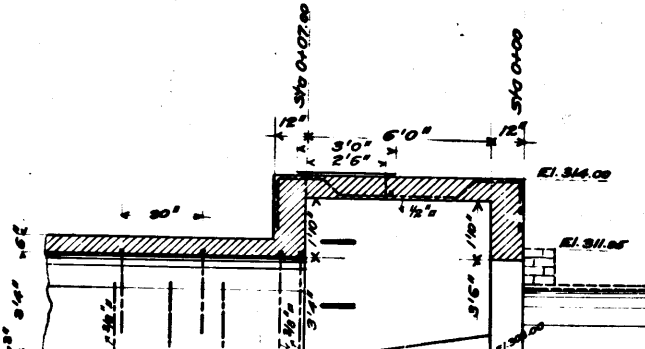
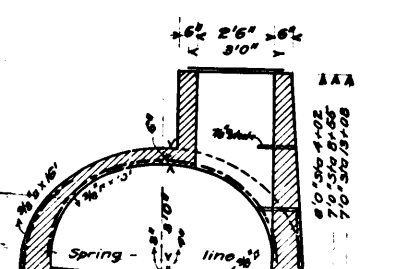
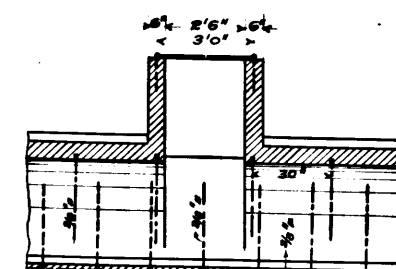
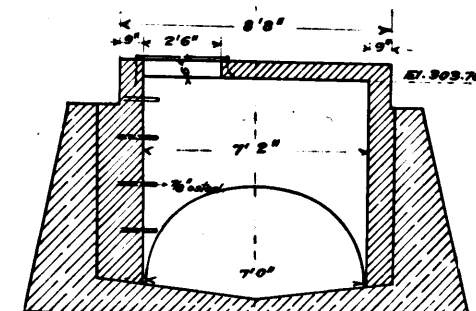
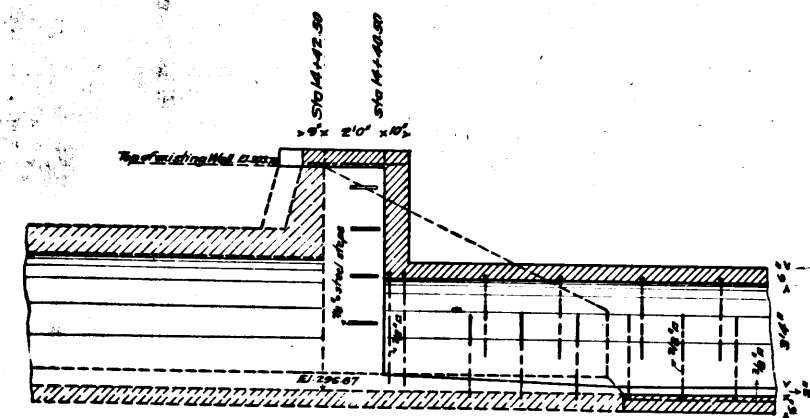
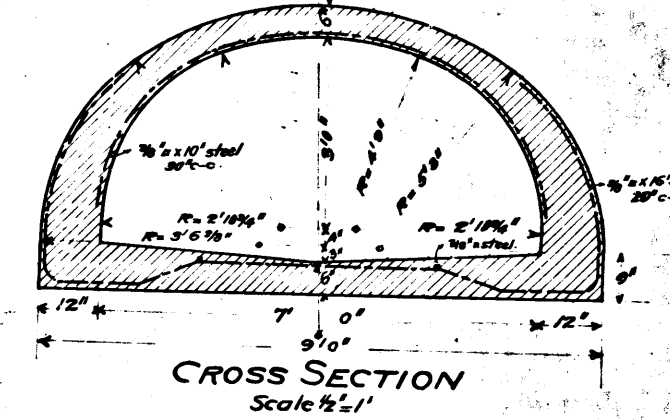
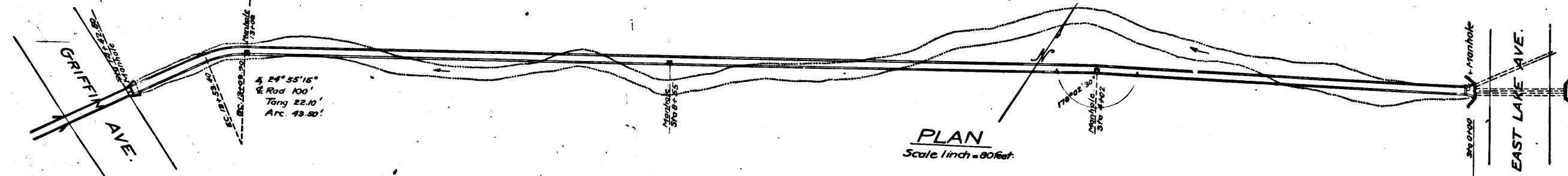
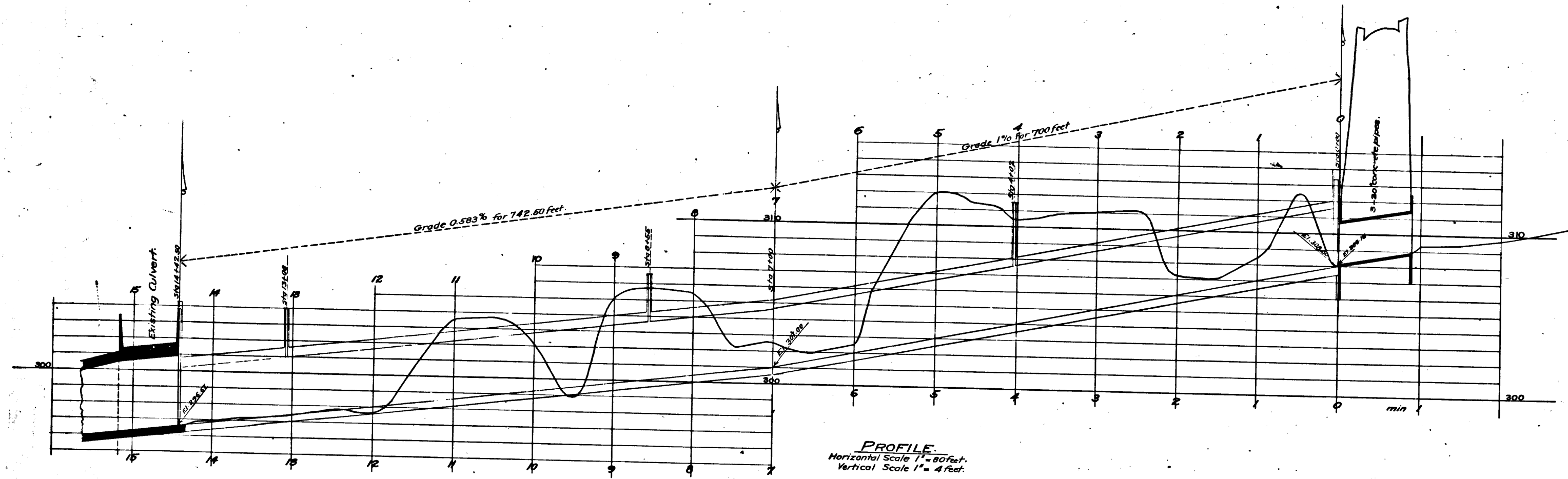
L.B. 40-45

Incl. Map C.S. 7961

I.M. 8

FOR STORM WATER CONDUIT.
Bids for the construction of a concrete storm water conduit on the grounds of the County Detention Home on the Mission Road were received by a board of supervisors Monday, Geo. Attridge, Liberty Ave., N. Pasadena, bid \$21,714. John H. Smith, \$18,000. John H. Smith, \$18,000. J.W. Van der Merwe, \$18,000. J.W. Van der Merwe, \$18,000. J.W. Van der Merwe, \$18,000. The order was awarded to George H. Smith.

FIELD WORK *Steggs*
PLATTED BY *Poltenberg*
TRACED BY
CHECKED BY *F.L.V.*



CS 7739