

CS 7756  
A1 OF A3

# MAP OF PORTION OF CORONA TRACT SHOWING COLE ROAD

August, 1911  
AND SCOTT AVE.  
Ivory B. Noble County Surveyor

Scale 1 in. = 100 ft.

FB 40-33

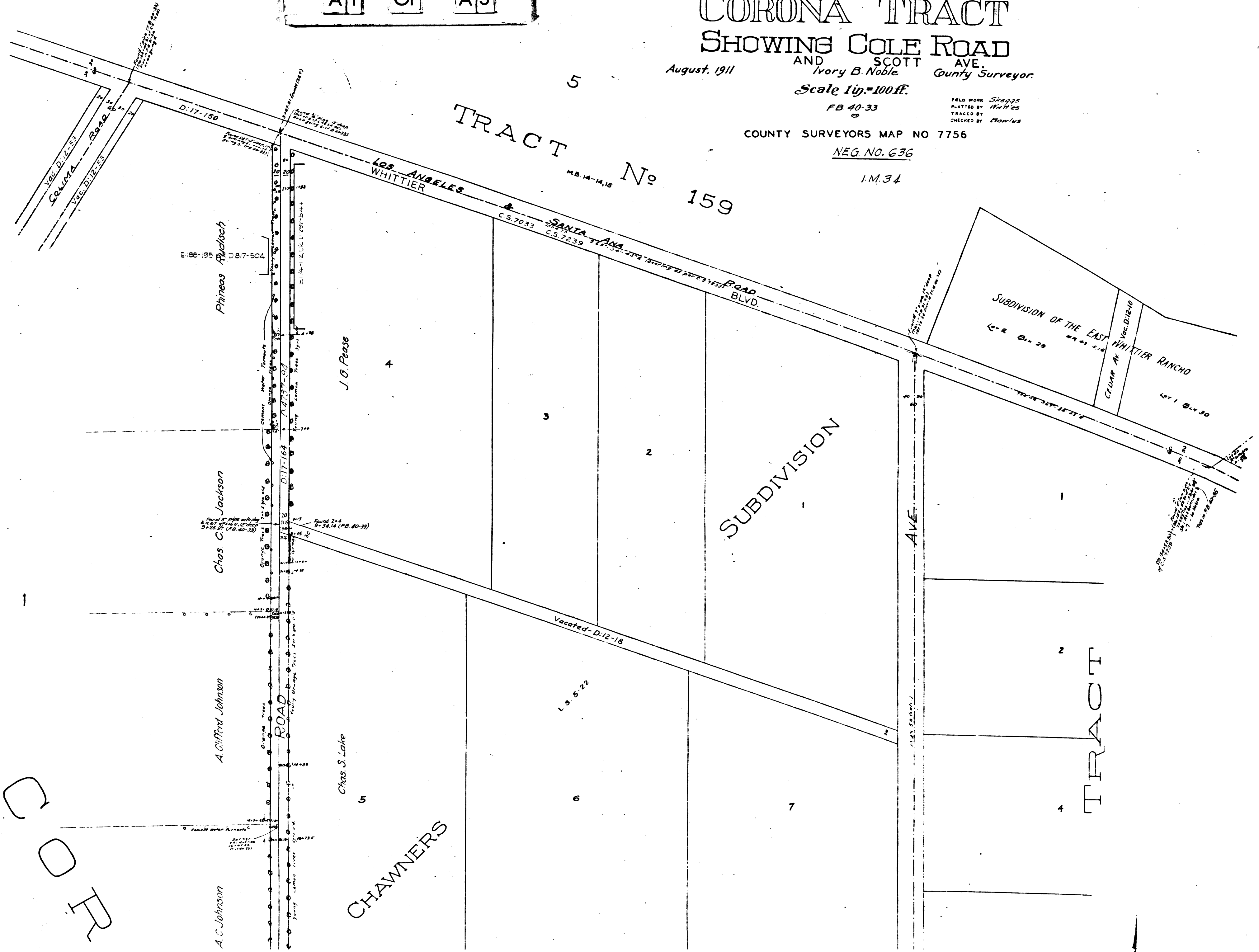
FIELD WORK SHEPES  
PLATTED BY WHITTIER  
TRACED BY  
CHECKED BY BOWLUS

COUNTY SURVEYORS MAP NO 7756

NEG. NO. 636

I.M. 34

## TRACT No 159



CORONA

CHAWNERS

TRACT

SUBDIVISION OF THE EAST  
WHITTIER RANCHO  
Let 2 Oct 29  
Let 1 Oct 30

COORNO ANZA

SUBDIVIS

AVE.

TRACT

Chas C Jackson  
Round 1st pipe with  
A. V. S. 12' deep  
5' x 26.5' (P.B. 40-33)

A Clifford Johnson

A.C. Johnson

Sarah M. Miller

Jesse T. Burnett

E 84' OF L.S. 253-790  
Geo W Cole Jr

E 180-257

E 25-84-300

Chas. S. Lake

August F. Wiese

Charles D. Post  
M.R. 37-59  
P.O. 34, D. 1-2-1

Charles D Post

CHANNERS

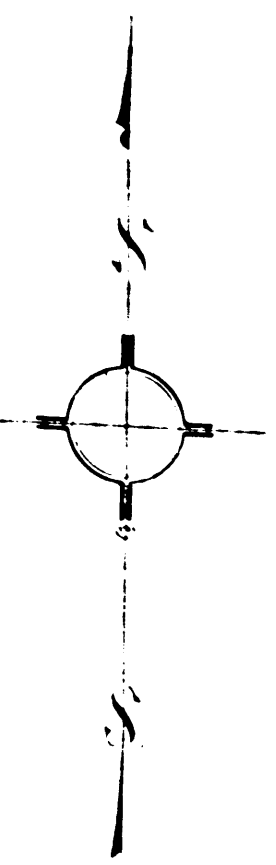
Vacated-D:12-18

L.S. 5-22

509' 58" 10' F  
1470.58 1174 76.76 (P.B. 184-40)

C. S. 3578

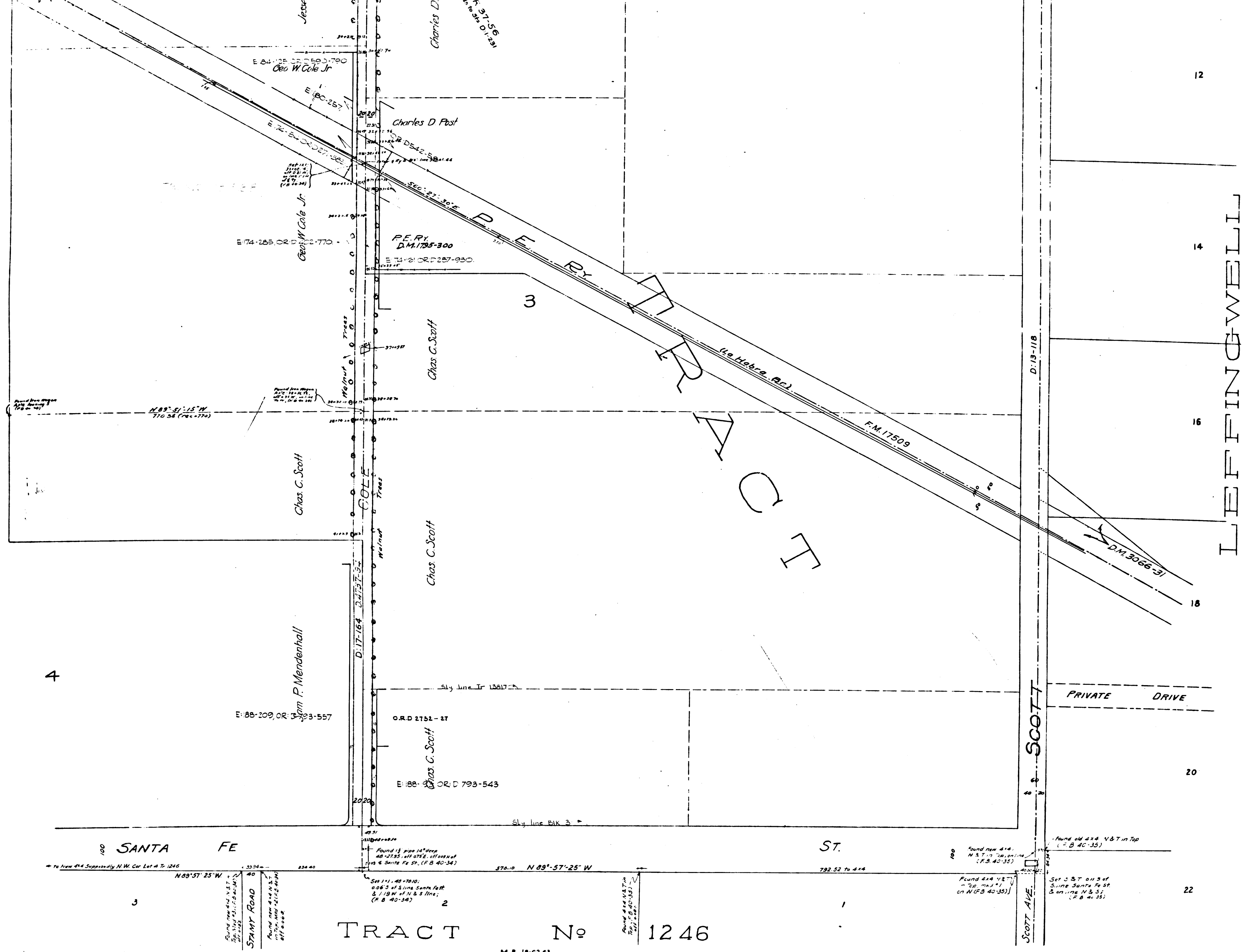
CS 7756  
A2 OF A3



M.B. 2-34

12

RECORDED  
INDEXED  
FILED  
MAY 10 1917  
Twp 12 N R 30 W S 4



TRACT No 1246  
M.B. 18-62, 63

CS 7756  
A3 OF A3