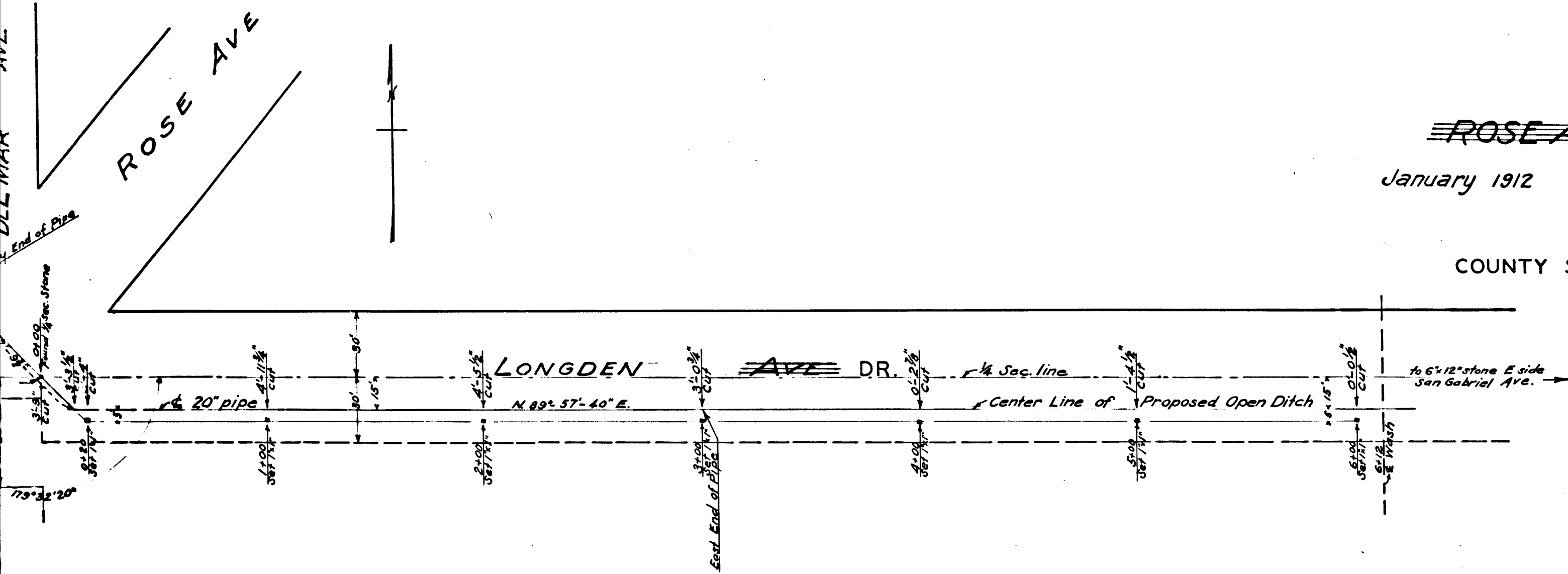


CS	7	7	8	7
A1	OF	A2		



map of  
portions of  
~~ROSE AVE. AND LONGDEN AVE.~~ DR.

January 1912 I. B. Noble. County Surveyor

Scale: 1 in. = 40 ft.  
L. B. 43-69

COUNTY SURVEYORS MAP NO. 7787

RETRACED BY J. BLACK FEB. 1956  
CHECKED BY E. POGGIONE

C	S	7	7	8	7
A	2	OF	A	2	

COUNTY SURVEYORS MAP NO. 7787

COUNTY SURVEYORS MAP NO. 7787