

1911 with County Engineer Web No 2835

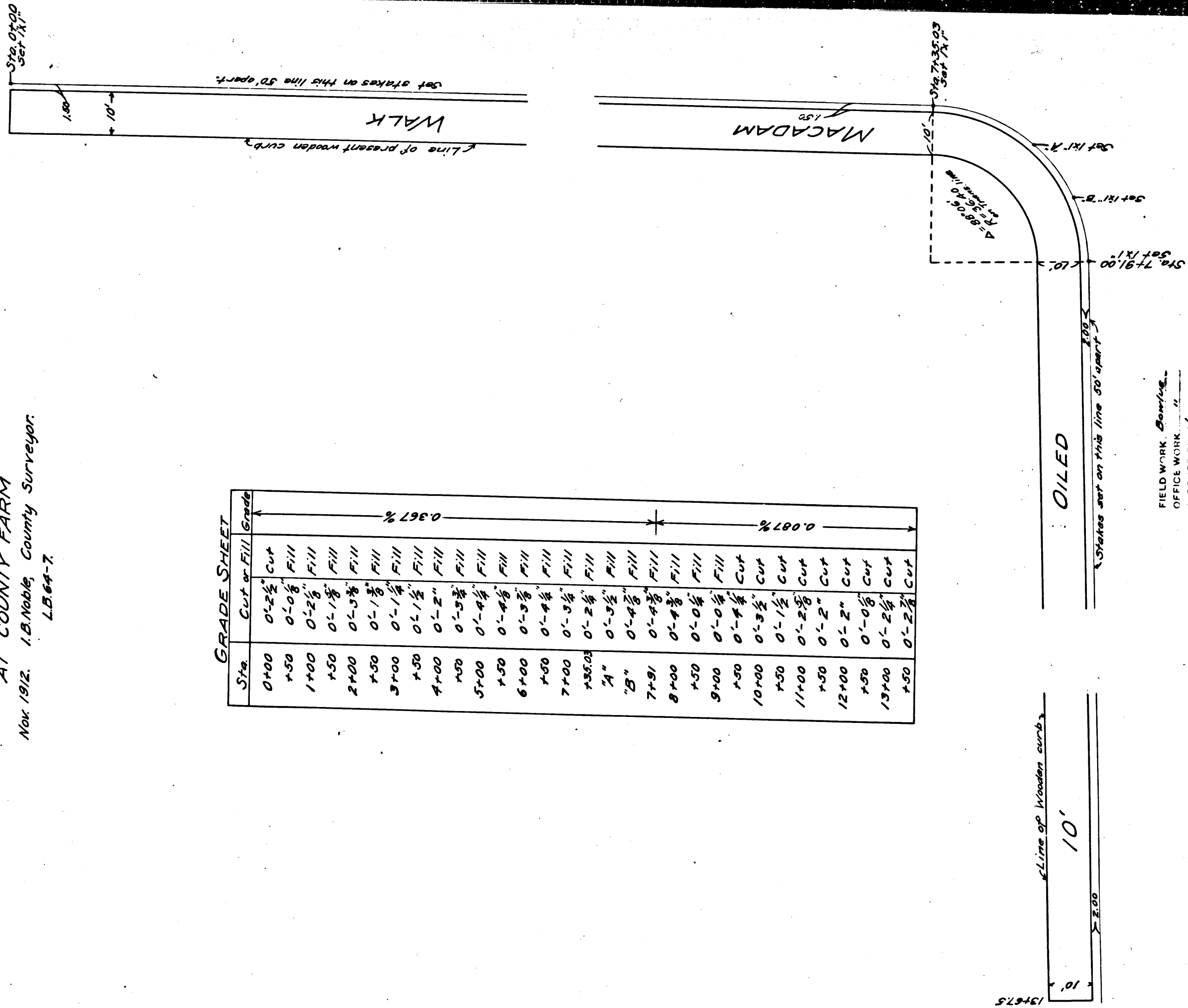
**GRADE SHEET**  
FOR TEN FT. MACADAM WALK  
AT COUNTY FARM

Nov. 1912. I.B. Noble, County Surveyor.

LB 64-7

Sta.	Cut or Fill Grade
0+00	0'-2 1/2" CUT
+50	0'-0 1/2" FILL
1+00	0'-2 1/2" FILL
+50	0'-1 1/8" FILL
2+00	0'-0 3/8" FILL
+50	0'-1 1/8" FILL
3+00	0'-1 1/2" FILL
+50	0'-1 1/2" FILL
4+00	0'-2" FILL
+50	0'-3 1/2" FILL
5+00	0'-4 1/2" FILL
+50	0'-3 3/8" FILL
6+00	0'-3 3/8" FILL
+50	0'-4 1/2" FILL
7+00	0'-3 1/2" FILL
+50	0'-2 1/2" FILL
8+00	0'-4 1/2" FILL
+50	0'-0 1/2" FILL
9+00	0'-1 1/2" CUT
+50	0'-4 1/2" CUT
10+00	0'-2 1/2" CUT
+50	0'-1 1/2" CUT
11+00	0'-2 1/2" CUT
+50	0'-2" CUT
12+00	0'-2" CUT
+50	0'-0 1/2" CUT
13+00	0'-2 1/2" CUT
+50	0'-2 1/2" CUT

0.087%      0.367%



FIELD WORK Done by  
OFFICE WORK Done by  
CHECKED BY - [Name]

1911 with County Engineer Web No 2835

CS 7832  
A 2 OF A 2