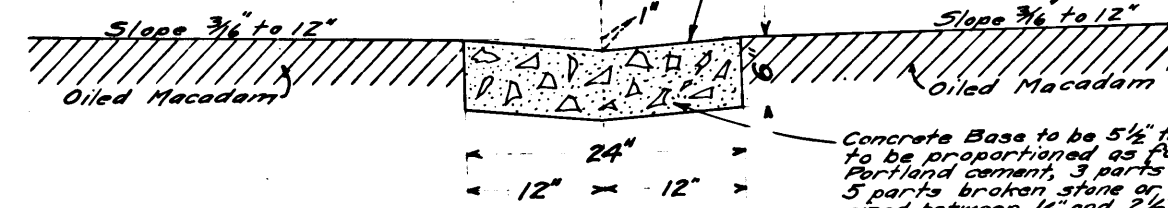


PLANS FOR
MACADAM PAVEMENT
OF
STOCK YARDS
AT COUNTY FARM.

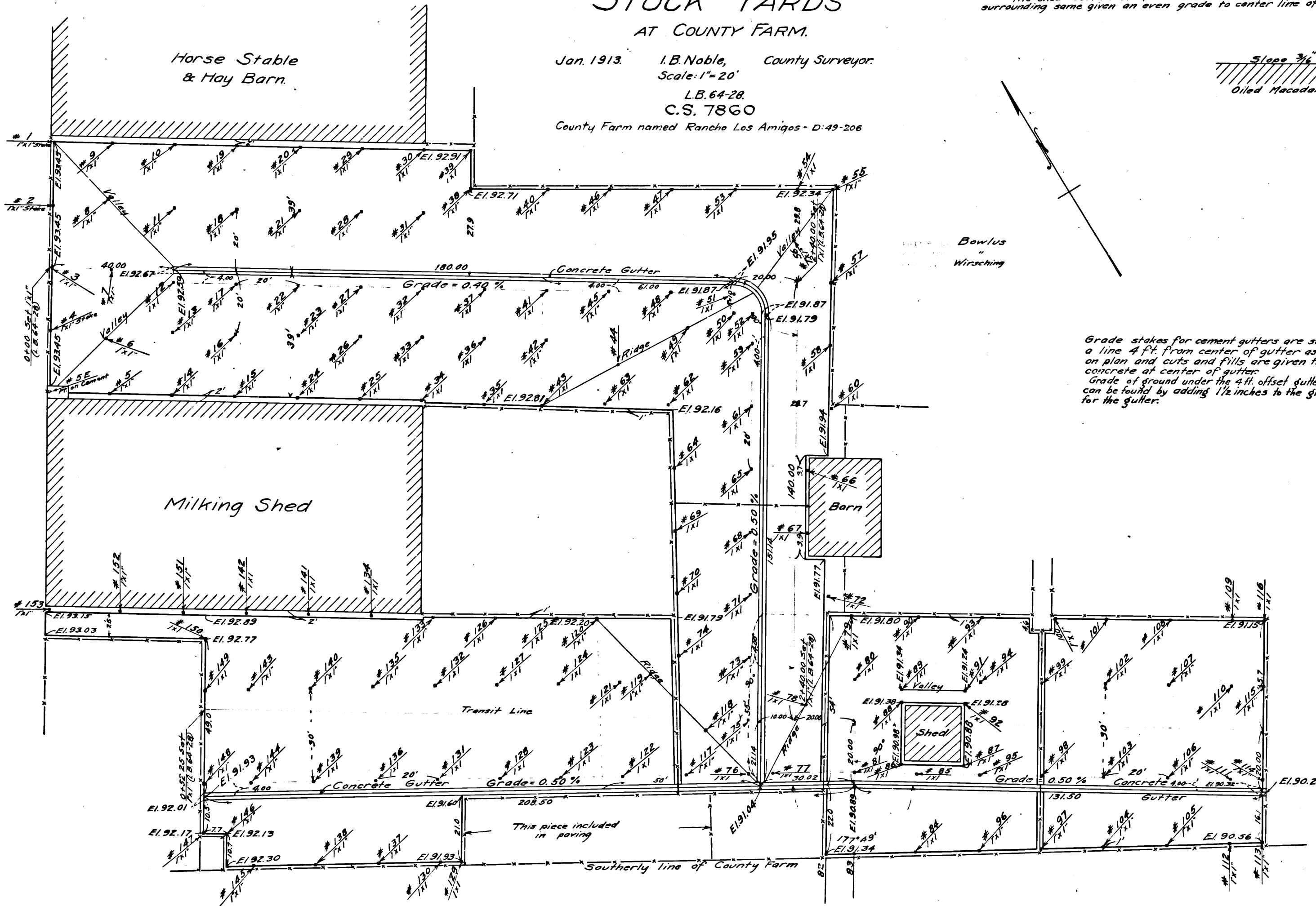
Jan. 1913. I.B. Noble, County Surveyor.
Scale: 1" = 20'
L.B. 64-28.
C.S. 7860
County Farm named Rancho Los Amigos - D-49-206

Note: The stakes on this work had to be replaced and were then set to grade at points indicated in the drawing with the exception that the stakes for the gutter were set to grade on the center line of same.
The cement gutters were omitted from original plans and the grades of intermediate points were fixed by lines drawn from established points on outside lines to the center lines of gutters.
The shed southwest of the barn was also removed and the whole area surrounding same given an even grade to center line of gutter.

1/2" Finish Coat to consist of 1 part Portland cement, 2 parts of sand to be thoroughly troweled in before base has set. Finish to be rough.



CROSS-SECTION OF CONCRETE GUTTER.
Scale: 1" = 1'



Grade stakes for cement gutters are set on a line 4 ft. from center of gutter as shown on plan and cuts and fills are given to top of concrete at center of gutter.
Grade of ground under the 4 ft. offset gutter stakes can be found by adding 1 1/2 inches to the grade for the gutter.

Grade Stakes for Concrete Gutter			Grade Stakes for Macadam								
Stake No.	Cut Ft. Ins.	Fill Ft. Ins.	Cut or fill is from top of stake to surface of Macadam.			Cut or fill is from top of stake to surface of Macadam.			Cut or fill is from top of stake to surface of Macadam.		
No.	Cut	Fill	No.	Cut	Fill	No.	Cut	Fill	No.	Cut	Fill
12	0'-5 1/2"		1		0'-4 1/4"	49		0'-4"	107		0'-2 3/4"
17	0'-4 3/4"		2		0'-4 1/4"	53		0'-2 3/4"	108		0'-3 1/4"
22	0'-2 1/2"		3		0'-4 1/4"	54		0'-2 3/4"	109		0'-0"
27		0'-1 1/4"	4		0'-3 3/4"	55		0'-2 3/4"	110		0'-2 3/4"
32		0'-0 1/4"	5E	0'-0 1/4"		56		0'-4 1/4"	112		0'-3 1/2"
37	0'-4"		5		0'-3 3/4"	57		0'-6 1/4"	113		0'-1 1/2"
41		0'-0 1/4"	6		0'-2 3/4"	58		0'-4 1/4"	115		0'-5 1/2"
45		0'-3 1/4"	7		0'-3 1/2"	60		0'-7 3/4"	116		0'-4 3/4"
48	0'-0 1/4"		8		0'-1"	62		0'-0"	118		0'-0 1/2"
50	± Radius = 10'		9		0'-3 3/4"	63		0'-7 3/4"	119		0'-1 1/2"
51		0'-0 1/4"	10		0'-0 1/4"	64		0'-4 1/4"	120		0'-3"
52		0'-2"	11		0'-6 3/4"	66		0'-3 3/4"	121		0'-0"
59	0'-0 1/4"		13		0'-4 1/4"	67		0'-4 1/4"	124		0'-1 1/2"
61		0'-1 3/4"	14		0'-2"	69		0'-0 1/2"	125		0'-0 1/4"
65	0'-0 1/4"		15		0'-0 1/4"	70		0'-3 3/4"	126		0'-1 3/4"
68		0'-0 1/4"	16		0'-6"	72		0'-6"	127		0'-3 1/2"
71		0'-1"	18		0'-5 1/4"	74		0'-0 1/2"	129		0'-7 1/2"
73	0'-0 1/4"		19		0'-0 1/4"	78		0'-3 1/2"	130		0'-7 1/2"
75	0'-1 3/4"		20		0'-0 1/4"	79		0'-3 1/2"	132		0'-0 1/4"
76	0'-2 3/4"		21		0'-2 1/2"	80		0'-3 3/4"	133		0'-0 1/4"
77	0'-4 1/4"		23		0'-5 3/4"	82		0'-3 3/4"	134		0'-4"
81	0'-4 1/4"		24		0'-1 3/4"	83		0'-1 3/4"	135		0'-2 1/2"
85	0'-5 1/4"		25		0'-1 1/2"	84		0'-3 3/4"	137		0'-4 1/4"
95	0'-4"		26		0'-7 1/4"	86		0'-1 1/2"	138		0'-0 1/2"
98	0'-3 3/4"		28		0'-1"	87		0'-1 1/2"	140		0'-2 3/4"
103	0'-5 1/2"		29		0'-0 1/4"	88		0'-4 1/4"	141		0'-0 1/4"
106	0'-6 3/4"		30		0'-4 1/4"	89		0'-4 1/4"	142		0'-2 3/4"
111	0'-10"		31		0'-1"	90		0'-7 1/2"	143		0'-3 3/4"
114	0'-10"		33		0'-1 1/4"	91		0'-4"	145		0'-0 1/4"
117	0'-4 1/4"		34		0'-1 3/4"	92		0'-3 3/4"	146		0'-0 1/4"
122	0'-3 3/4"		35		0'-6 1/4"	93		0'-6 1/4"	147		0'-1"
123	0'-1 1/4"		36		0'-1 1/8"	94		0'-4 1/4"	149		0'-5 1/2"
128		0'-0 3/4"	38		0'-5 3/4"	96		0'-0 1/4"	150		0'-2 1/4"
131	0'-1 1/2"		39		0'-3 3/4"	97		0'-3 3/4"	151		0'-1 1/4"
136	0'-0"		40		0'-4"	99		0'-1"	152		0'-0 1/2"
139	0'-1 3/4"		42		0'-3"	100		0'-6 3/4"	153		0'-3 3/4"
144		0'-2"	43		0'-2 3/4"	101		0'-6 3/4"			
148	0'-4"		44		0'-7"	102		0'-2 3/4"			
			46		0'-4 3/4"	104		0'-1 3/4"			
			47		0'-4 3/4"	105		0'-2 3/4"			

CS 7860