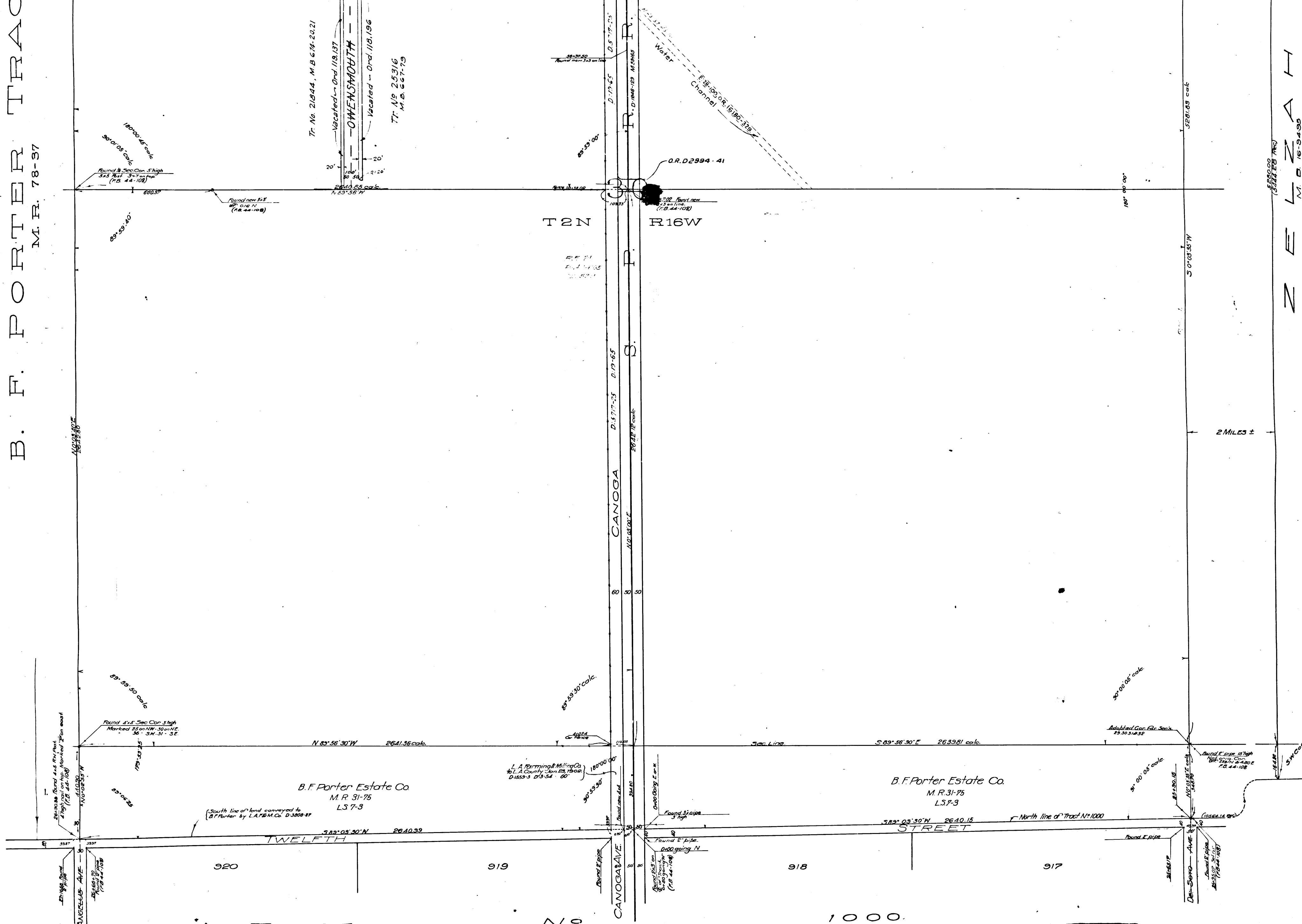


B. F. PORTER TRACT

M. R. 78-37

Z E L Z A H  
M. 16-34-95



TRACT

N 9

M. B. 15-18

SHEET 18

CS 7881

A 1 OF A 2

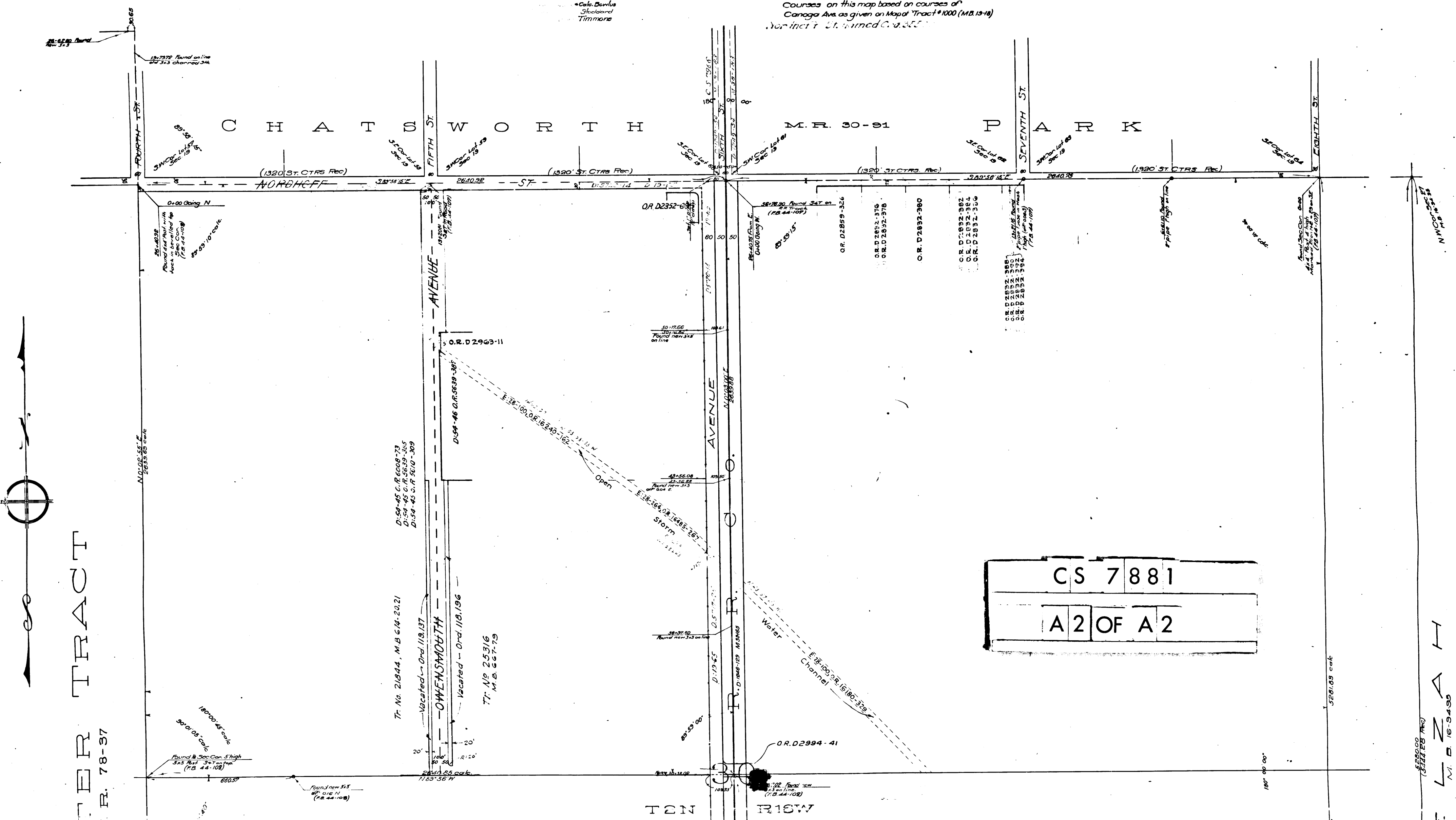
MAP  
OF PORTION OF  
**CANOGA AVENUE**

RANCHO EX MISSION DE SAN FERNANDO  
SECTIONS 30 & 31 T. 2 N., R. 16 W.

Surveyed April 1913 I. B. Noble County Surveyor.  
Scale 1 inch = 200 feet.  
F.B. 44-107

Courses on this map based on courses of  
Canoga Ave. as given on Map of Tract #1000 (M.B. 13-14)  
Surf. Sect. 31, 32, 33, 34, 35, 36, 37, 38, 39, 40, 41, 42, 43, 44, 45, 46, 47, 48, 49, 50, 51, 52, 53, 54, 55, 56, 57, 58, 59, 60, 61, 62, 63, 64, 65, 66, 67, 68, 69, 70, 71, 72, 73, 74, 75, 76, 77, 78, 79, 80, 81, 82, 83, 84, 85, 86, 87, 88, 89, 90, 91, 92, 93, 94, 95, 96, 97, 98, 99, 100.

\*Calc. Bertha  
Shelton  
Timmons



CS	7881
A2	OF A2

TRACT

R. 78-37

L. B. N. 16-9435