



MAP OF  
**TOPANCA CAÑON**  
 FROM SUMMIT, SEC.30,T.1N.,R.16W. TO VENTURA

Jan. 1914

Ivory B. Noble

Scale - 1 in = 200 ft

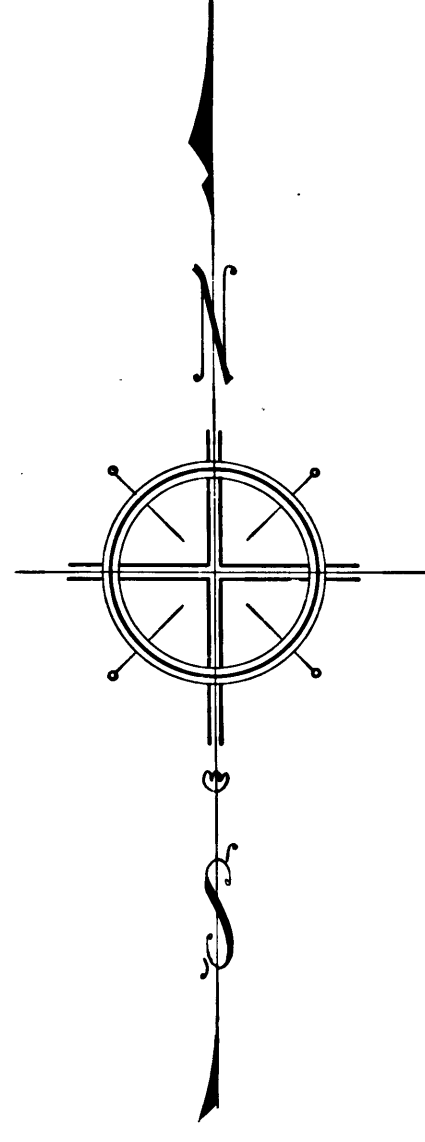
LB.70-40+54,79

*Topanga Canyon Rd (in county) changed to Topanga Canyon Blvd. D. 49-20*

*1083*  
 Bearings on this map carried from base as noted on C.S. 791.  
 For profile see C.S. 8939  
 for topography see ~~C.S. 8940~~ Discarded

FIELD WORK Beaulieu  
 OFFICE WORK Wentworth  
 CHECKED BY Stanley W. Wentworth

TR A C T



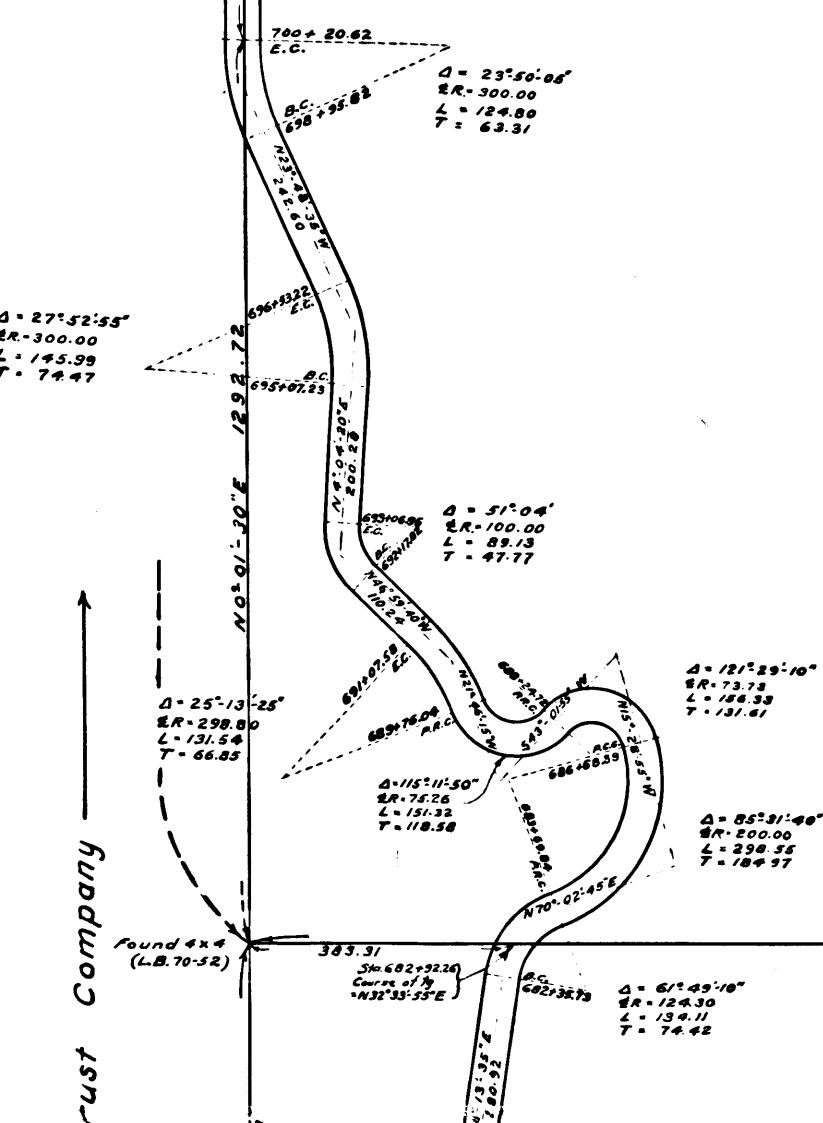
SHT. 25 (M.B. 19-25)

1083

Trust Company ← Title

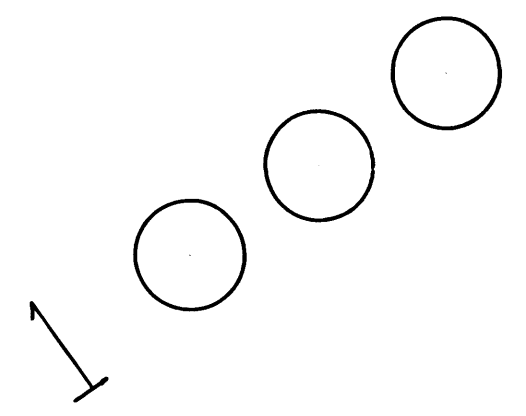
6678.13 (rec=6679.25)

N 0° 01' 30" E 5385.41



SHT. 26 (M.B. 19-26)

1087



CS 7917  
 A2 OF A3

OF  
**CAÑON ROAD** BLVD.  
 AND VENTURA COUNTY ROAD BLVD.  
 County Surveyor

Scale = 200 ft

1954, 79

Tajon Canyon Blvd. D: 49-202

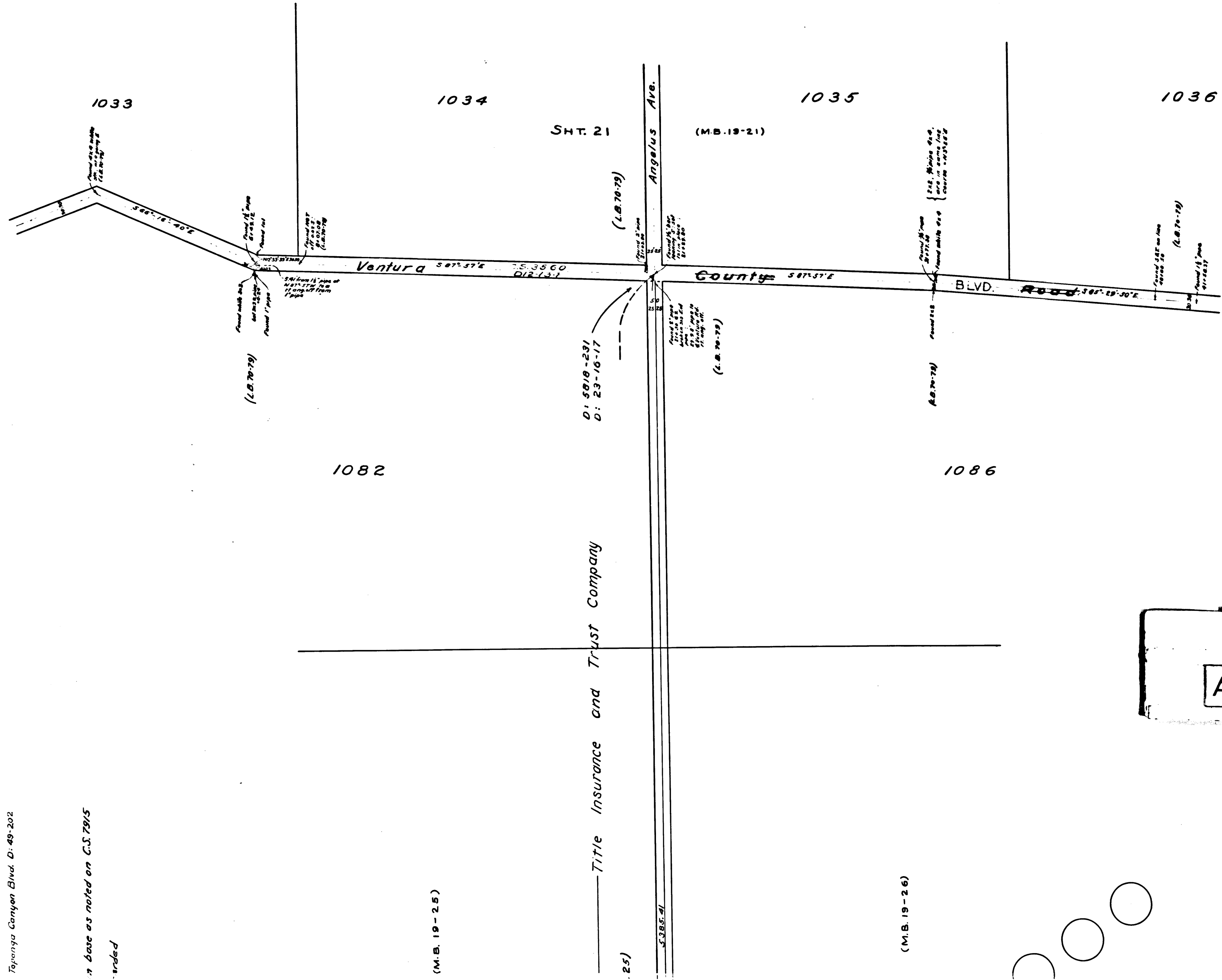
base as noted on C.S. 7915  
 ended

(M.B. 19-25)

— Title Insurance and Trust Company

(25)

(M.B. 19-26)



CS	7	9	1	7
A3	OF	A3		