



# HANCOCK PARK

MIN. BOOK 56-328

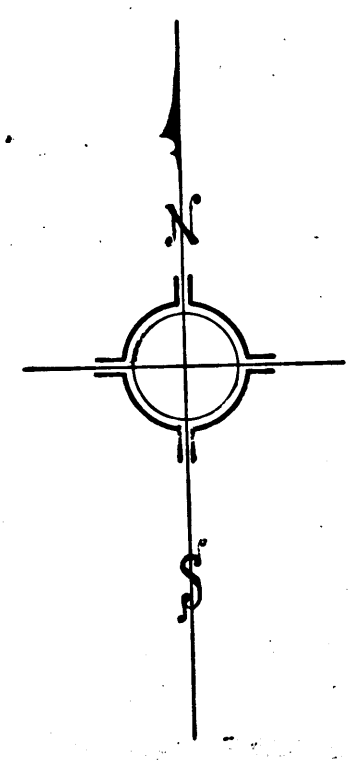
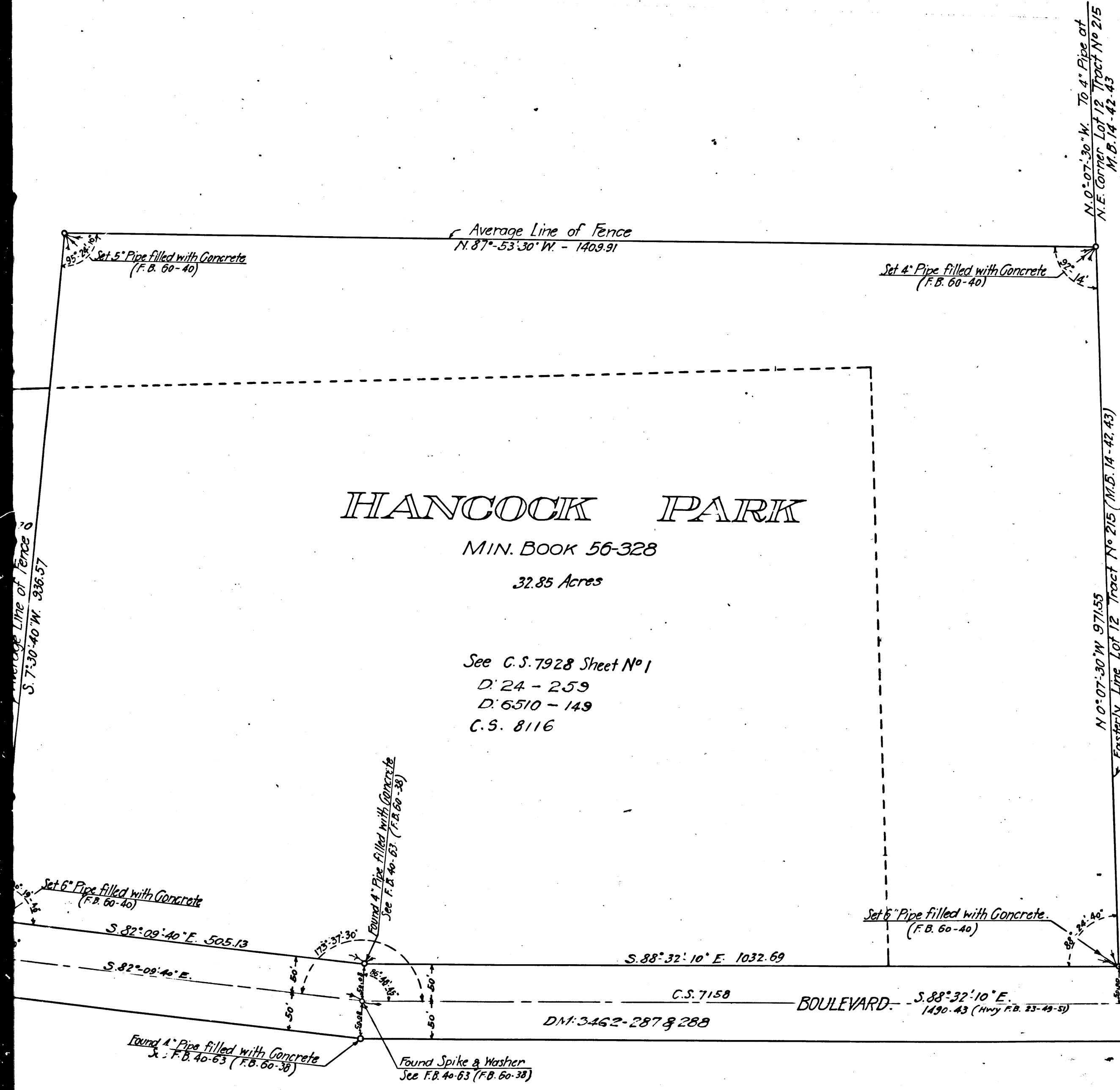
32.85 Acres

See C.S. 7928 Sheet No 1

D. 24 - 259

D. 6510 - 149

C.S. 8116



Per. Lot 12 deeded by L.A. Co. to G. Allan Hancock D:39-251 O.R. 4005-117

C	S	7	9	2	8	SHT.	2
A	2	OF	A	2			

VEMCO  
PASADENA

9 5 7

10TH

M.L.05

