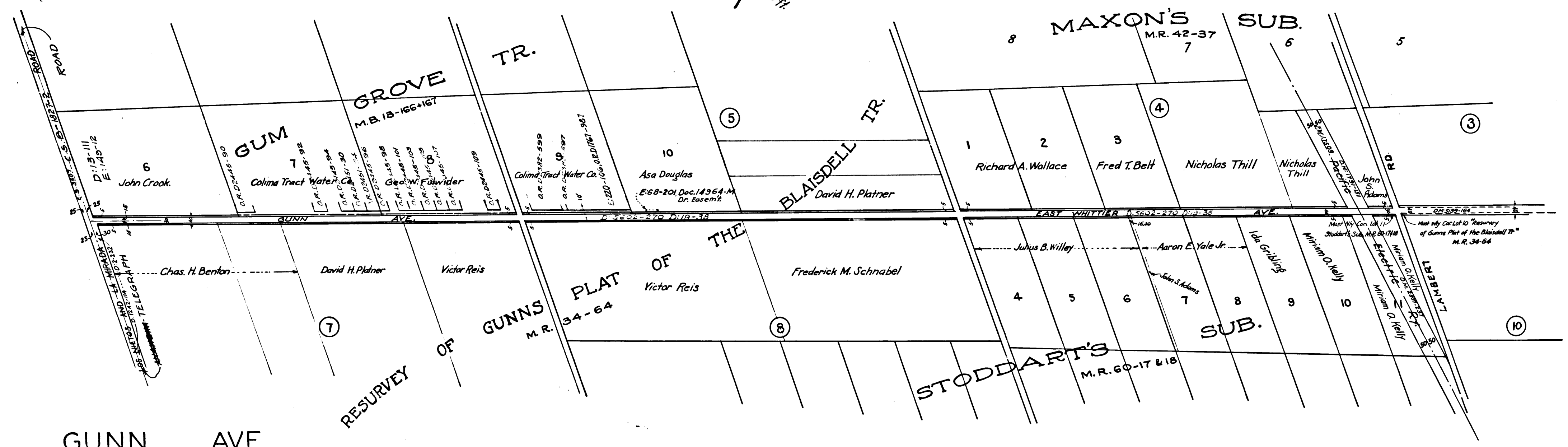


Scale 1 in = 300 ft



GUNNS AVE.
EAST WHITTIER AVE. OR GUNNS AVE.
 Compiled from records
 Strips colored red to be deeded.
 August 1st, 1913
 I. B. Noble County Surveyor.

INDEX 34

RETRACED BY J. BLACK FEB. 1956
 CHECKED BY E. POGGIONE

CS 7934