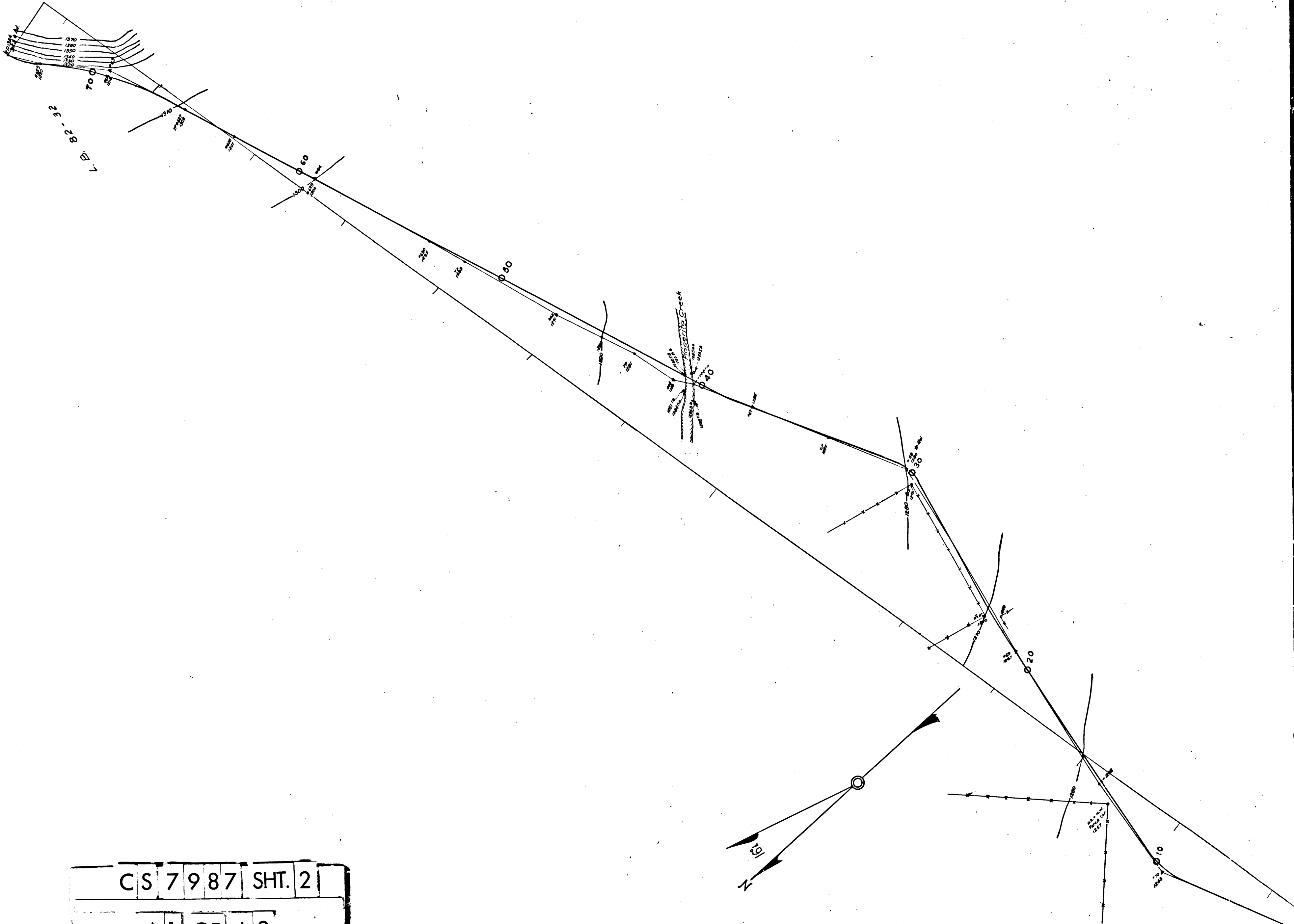
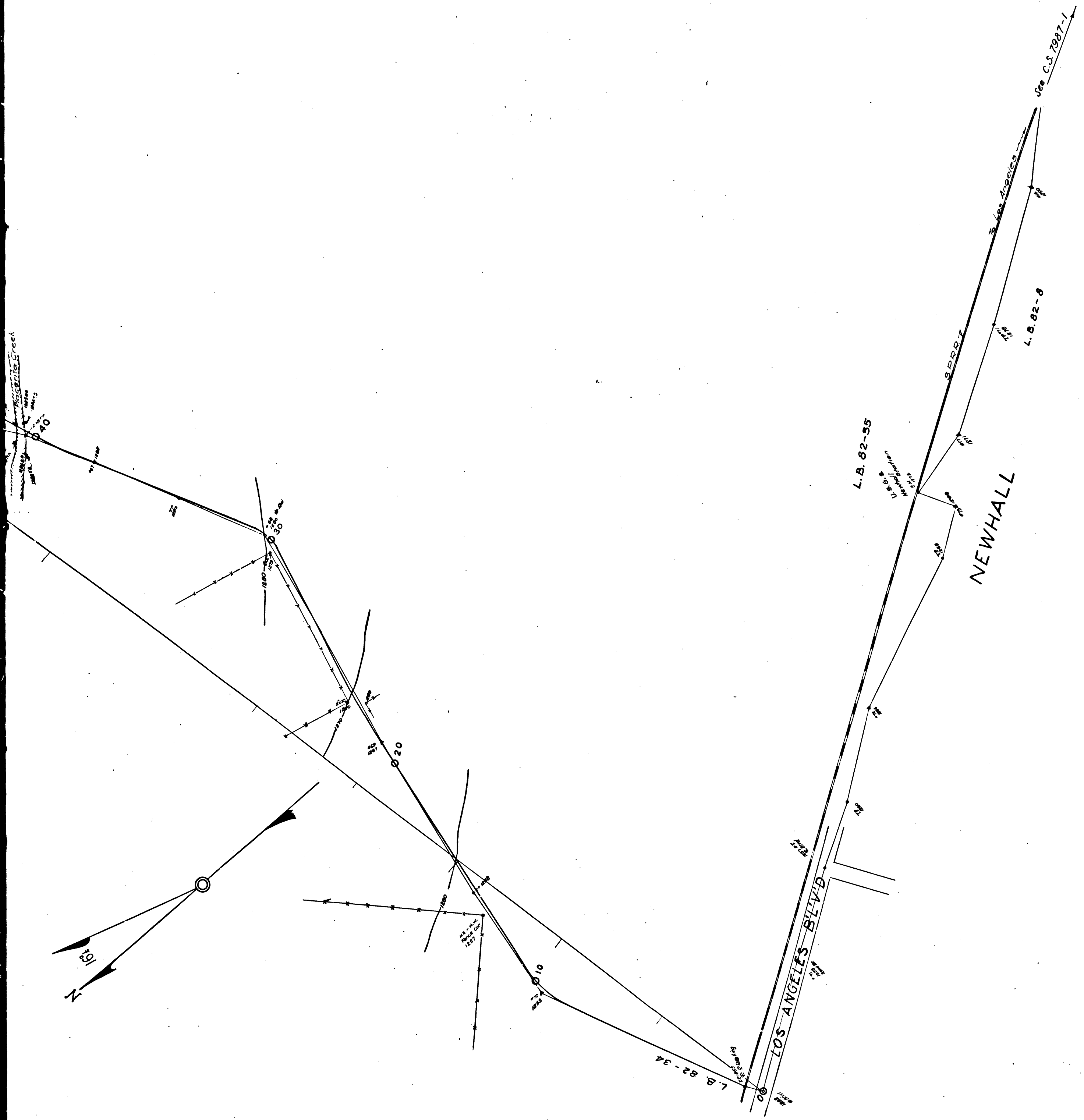


See C.S. 7987-1



CS	7	9	8	7	SHT.	2
A	1	OF	A	2		



CS	7	9	8	7	SHT.	2
A	2	OF	A	2		

MINT CANYON ROUTE

LOS ANGELES TO PALMDALE

(Preliminary)

TOWNSHIP 3,-4 N., - RANGE 15,-16 W.

Newhall to Junction of Mint & Soledad Cañons

COUNTY SURVEYORS MAP

№ 7987

November, 1914

Scale: 1" = 200 L.B. 80-53 (slope Angles) INDEX 264-137
 L.B. 82-1 (Survey)

Note: This Photact Tracing made Dec. 1956 from the detail paper original map which has been discarded.

Retouched by Alvin Dart, Jan 1957
 Checked by R.J.B.