

MAP SHOWING  
PRELIMINARY AND PROJECTED LOCATION LINES

FOR  
A PROPOSED HIGHWAY

BETWEEN  
LOS ANGELES AND PALMDALE

BEGINNING

AT THE INTERSECTION OF MICHIGAN AVENUE  
AND SCHOOL STREET, NEAR LA CAÑADA, AND RUNNING  
VIA ARROYO SECO, BIG TUJUNGA CREEK, MILL  
CREEK - AND VINCENT, TO PALMDALE.

Surveyed February to May, 1914, under the  
direction of IVORY B. NOBLE, County Surveyor  
of Los Angeles County.  
For Field Notes see Level Books 76-77-79-80.

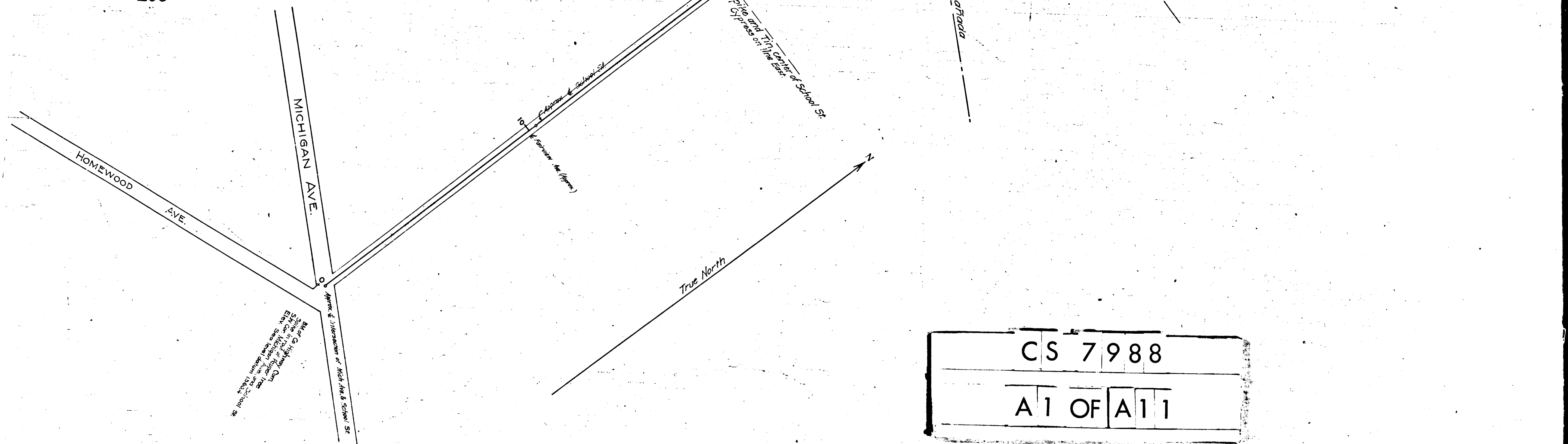
All Distances and Elevations were taken by Stadia.  
All Courses obtained by Needle Bearings.

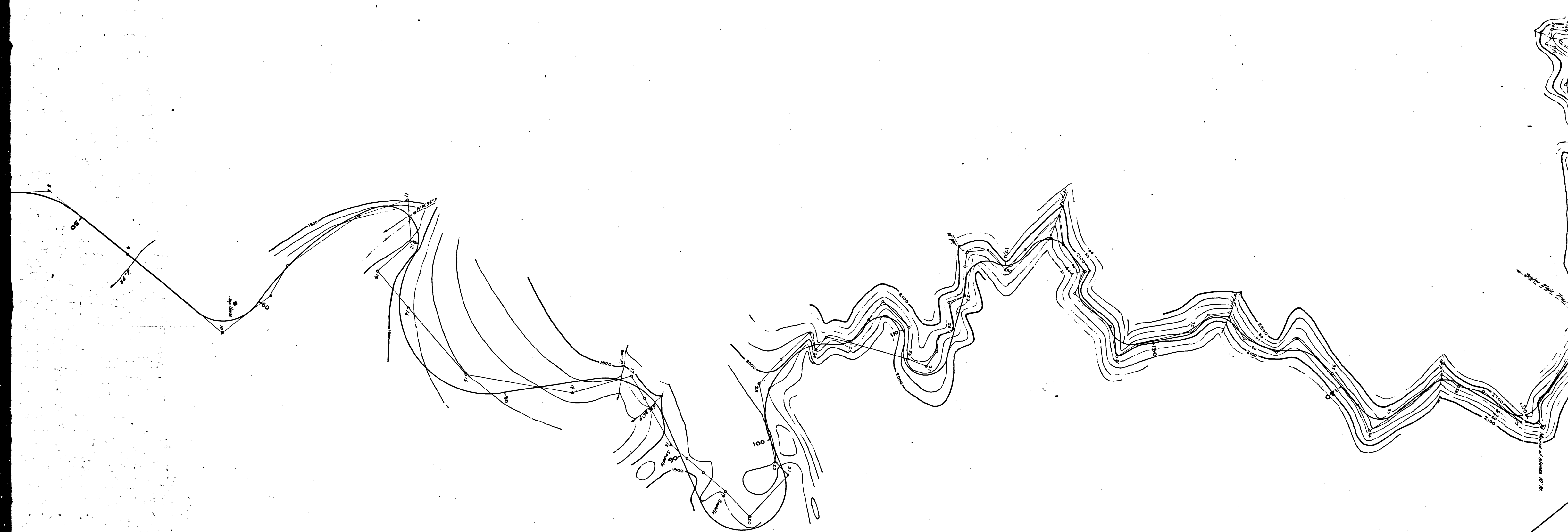
SHEET 1 OF 3

From Michigan Avenue to a point in Mill Creek  
3 Miles north of Tujunga Creek.

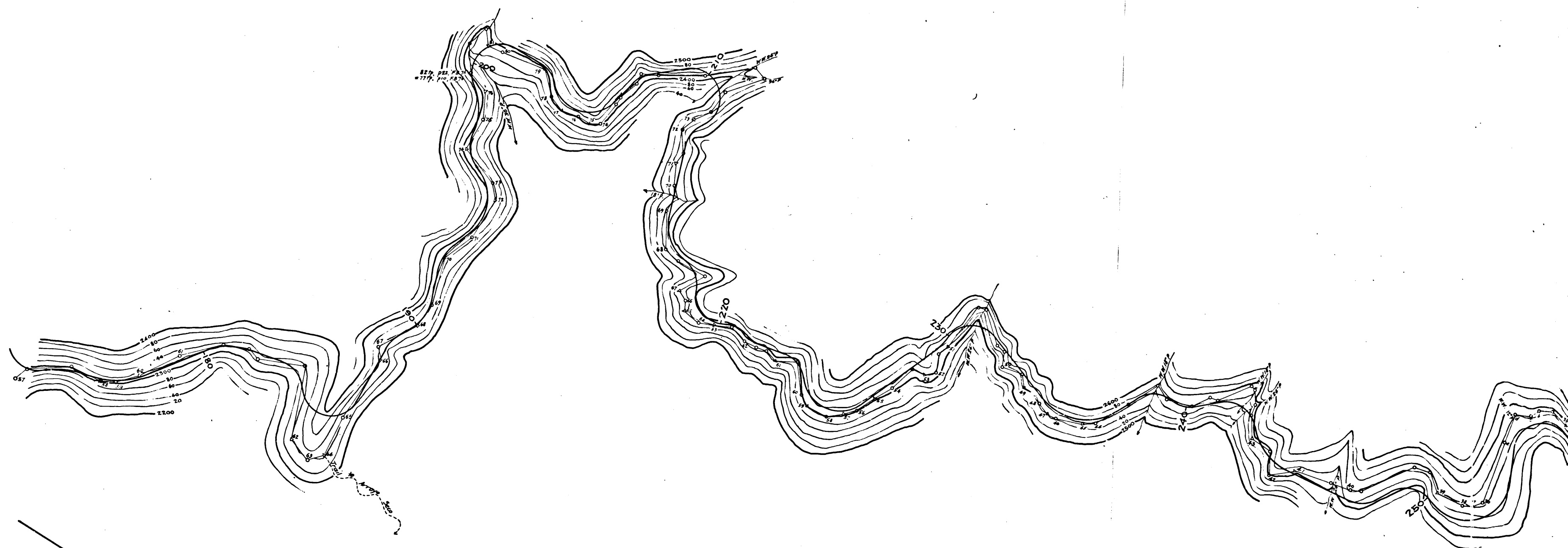
Traced from U.S. Map No. 7988 on file in the Office of  
The County Surveyor of Los Angeles County, California.

SCALE: 1" = 200'





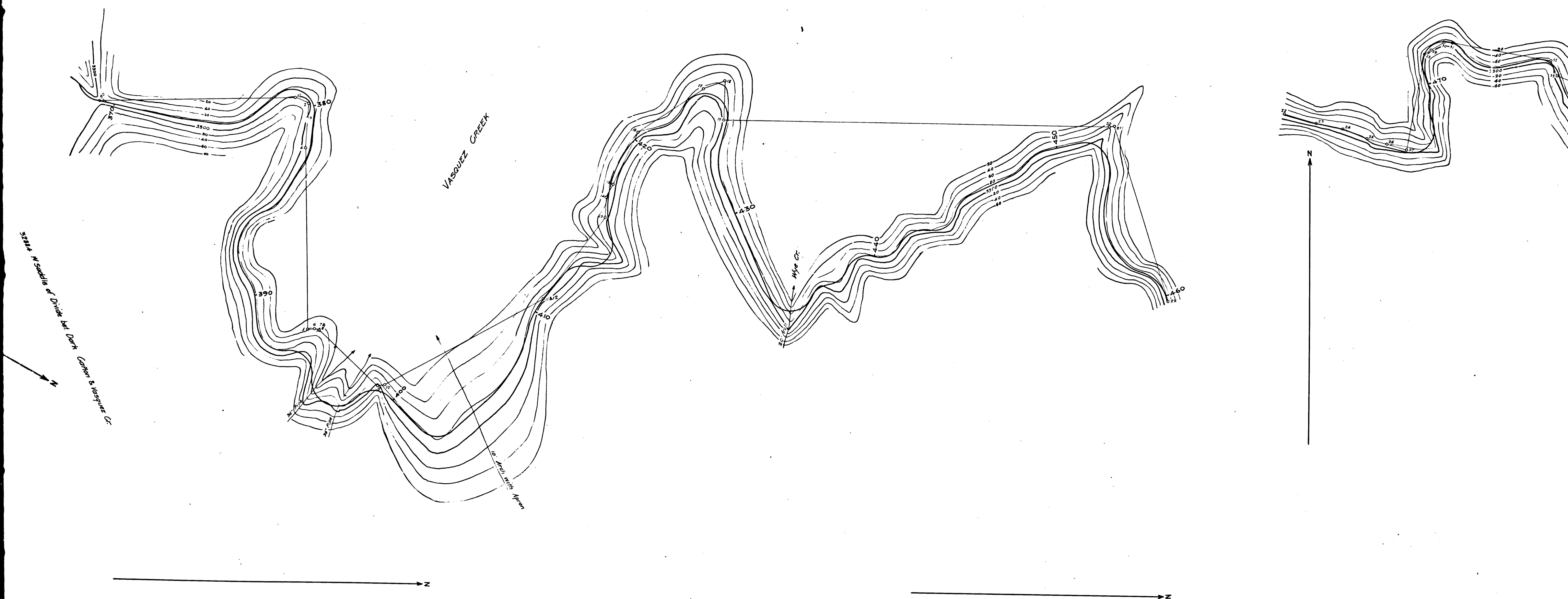
	CS	7	9	8	8
	A	2	OF	A	1



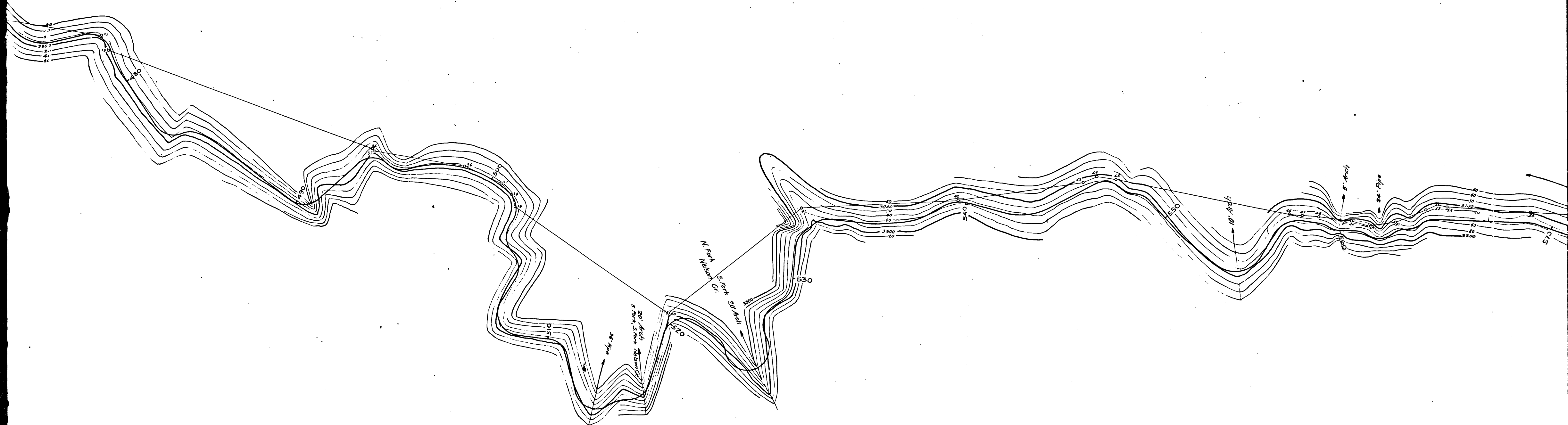
CS	7	9	8	8
A	3	OF	A	11



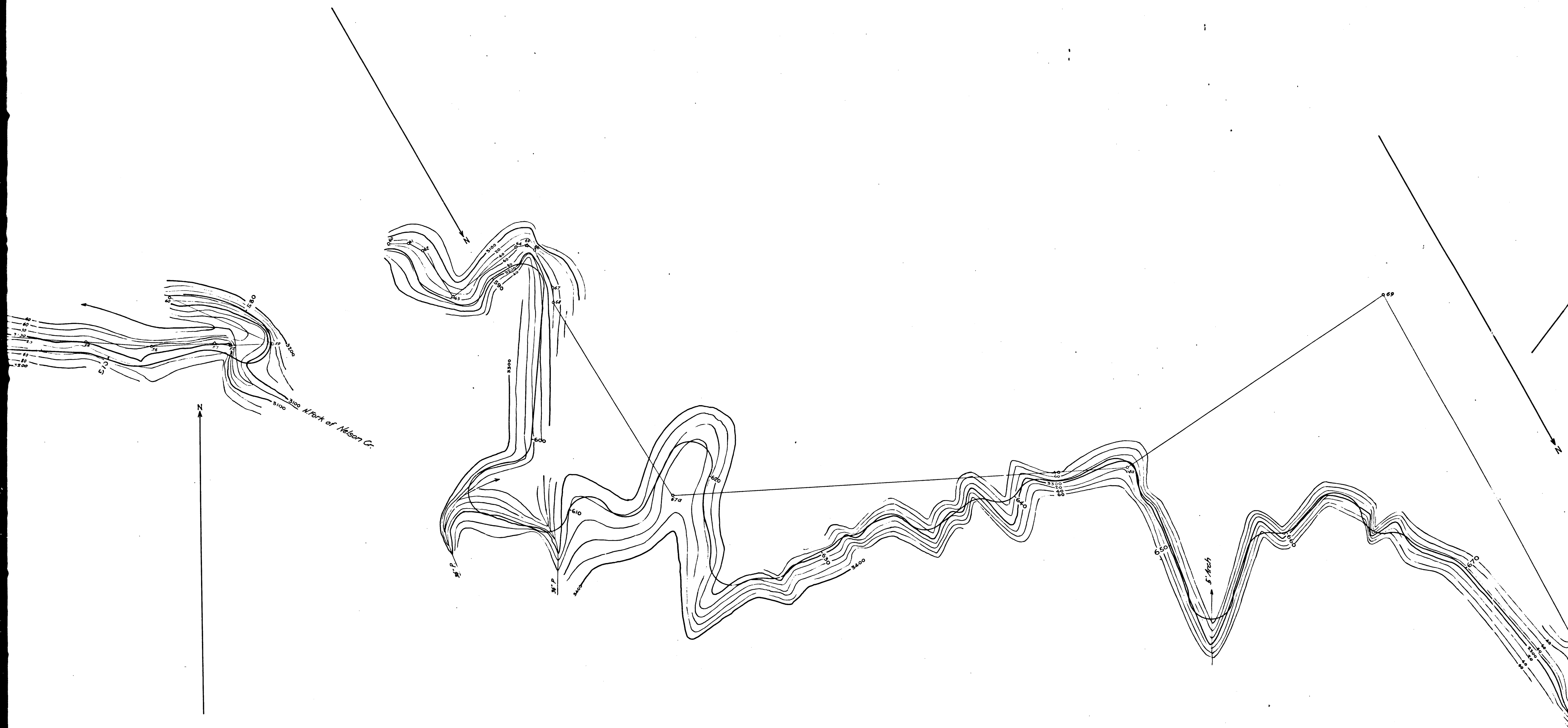
CS	7	9	8	8	
A	4	OF	A	1	1



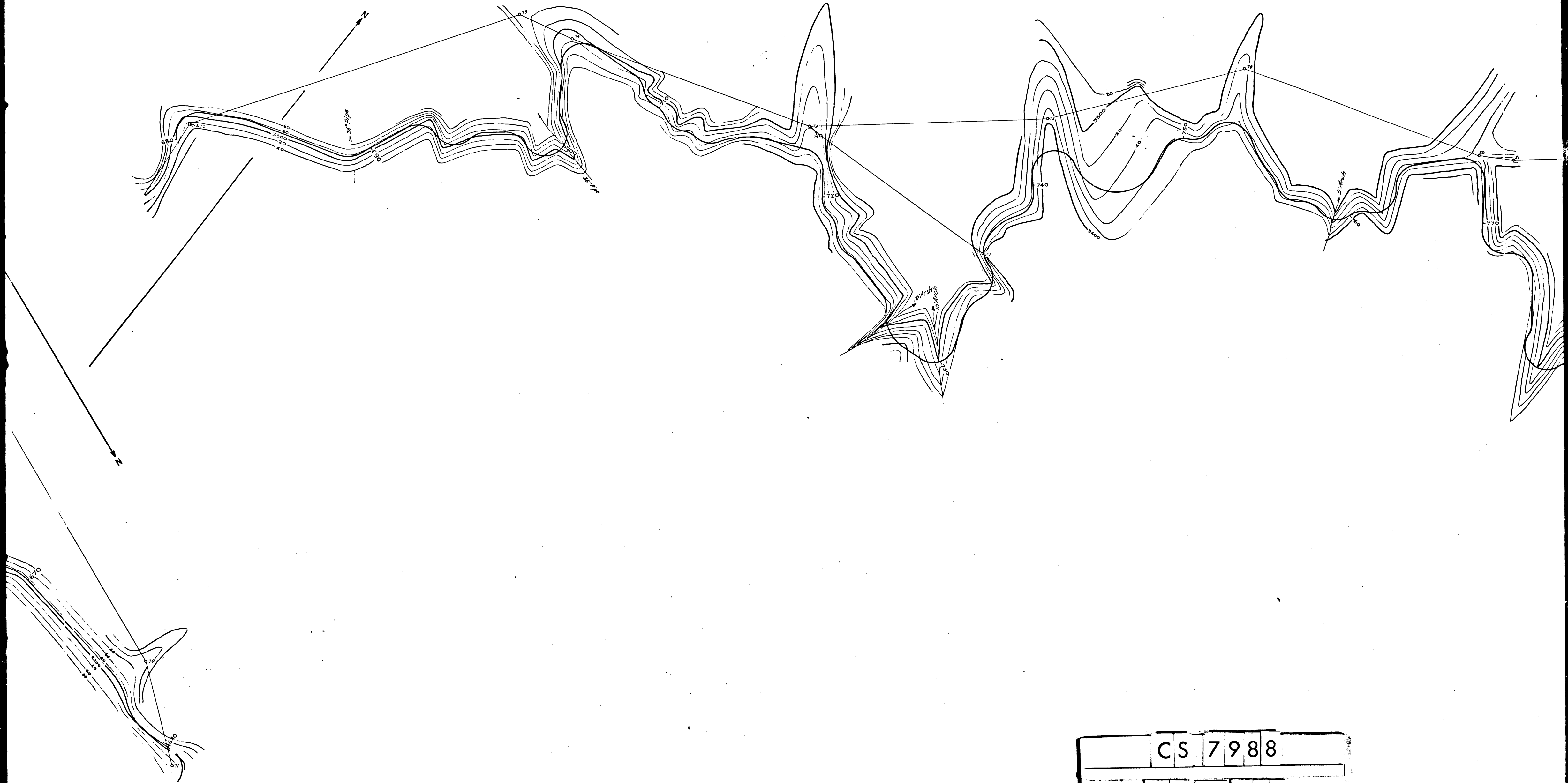
CS	7	9	8	8
A	5	OF	A	11



CS	7	9	8	8
A	6	OF	A	11



CS	7	9	8	8	
A	7	OF	A	1	1



CS	7	9	8	8
A	8	OF	A	11





CS 7988

A9 OF A11



