

MAP SHOWING
PRELIMINARY AND PROJECTED LOCATION LINES
FOR
A PROPOSED HIGHWAY
BETWEEN
LOS ANGELES AND PALMDALE
BEGINNING

AT THE INTERSECTION OF MICHIGAN AVENUE
AND SCHOOL STREET, NEAR LA CAÑADA, AND RUNNING
VIA ARROYO SECO, BIG TUJUNGA CREEK, MILL
CREEK AND VINCENT, TO PALMDALE.

Surveyed February to May, 1914, under the
direction of IVORY B. NOBLE, County Surveyor
of Los Angeles County.

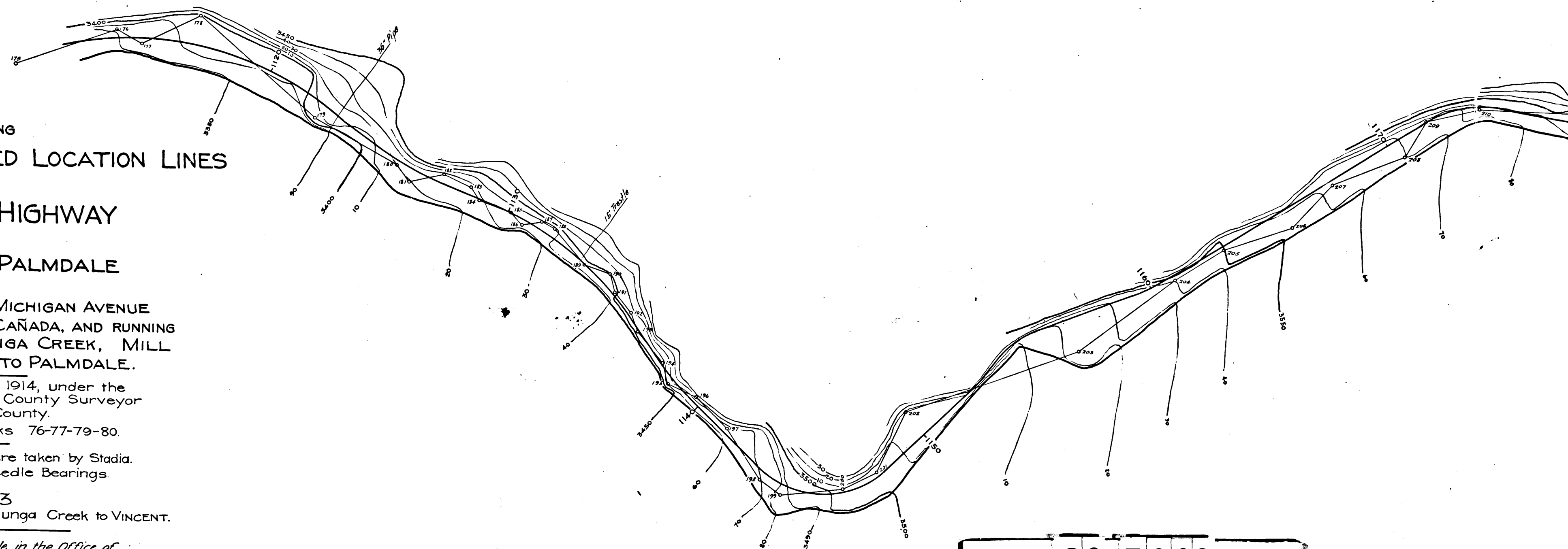
For Field Notes see Level Books 76-77-79-80.

All Distances and Elevations were taken by Stadia.
All Courses obtained by Needle Bearings.

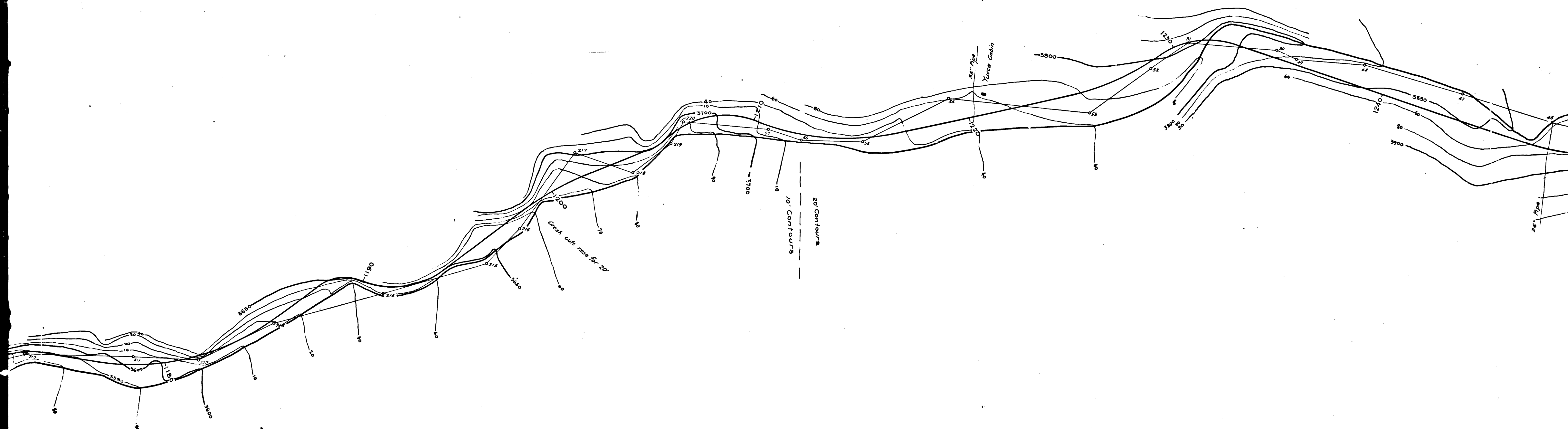
SHEET 2 OF 3
From a point 3 Miles north of Tujunga Creek to VINCENT.

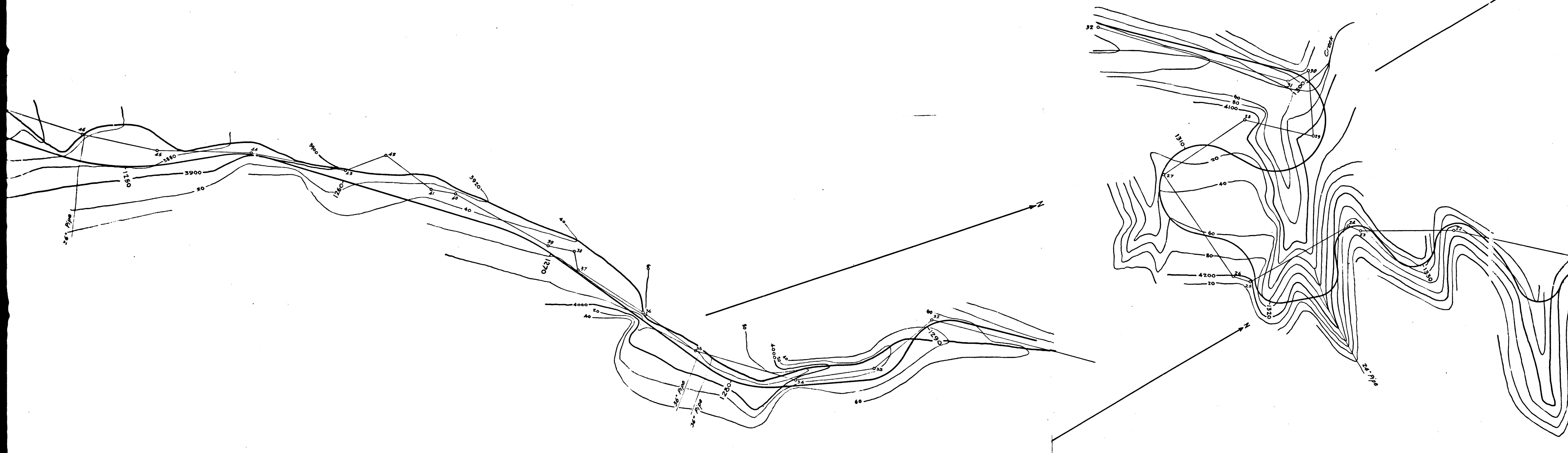
Traced from U.S. Map No 7989 on file in the Office of
The County Surveyor of Los Angeles County, California

SCALE: 1" = 200'

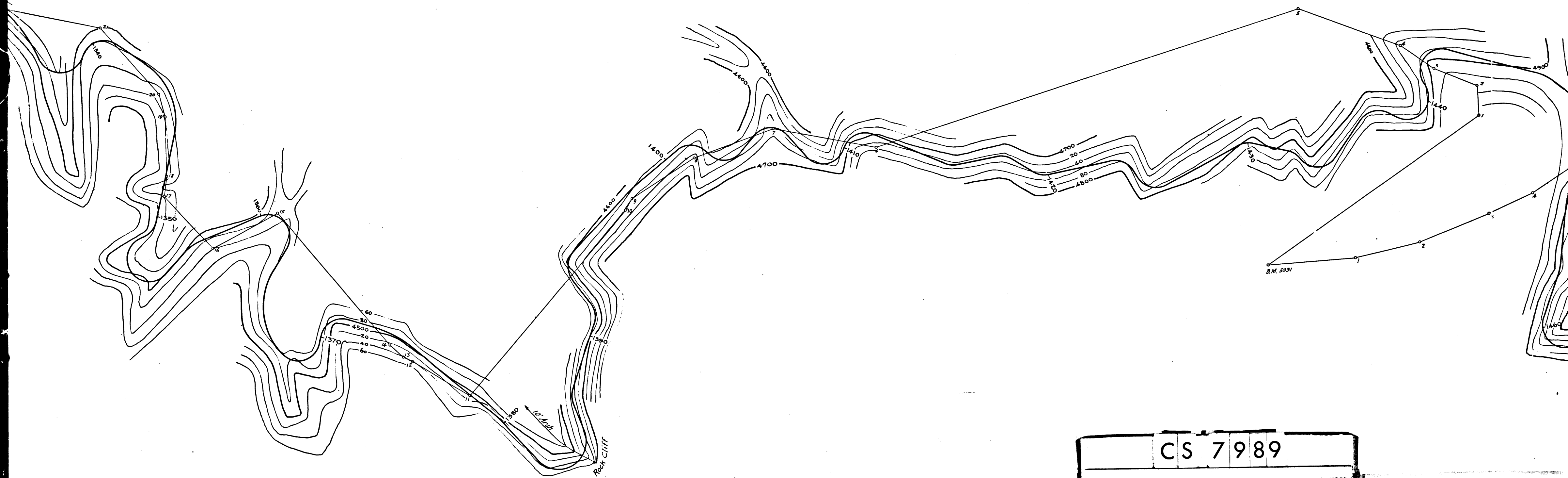


| | | | | |
|----|---|----|---|----|
| CS | 7 | 9 | 8 | 9 |
| A | 1 | OF | A | 11 |

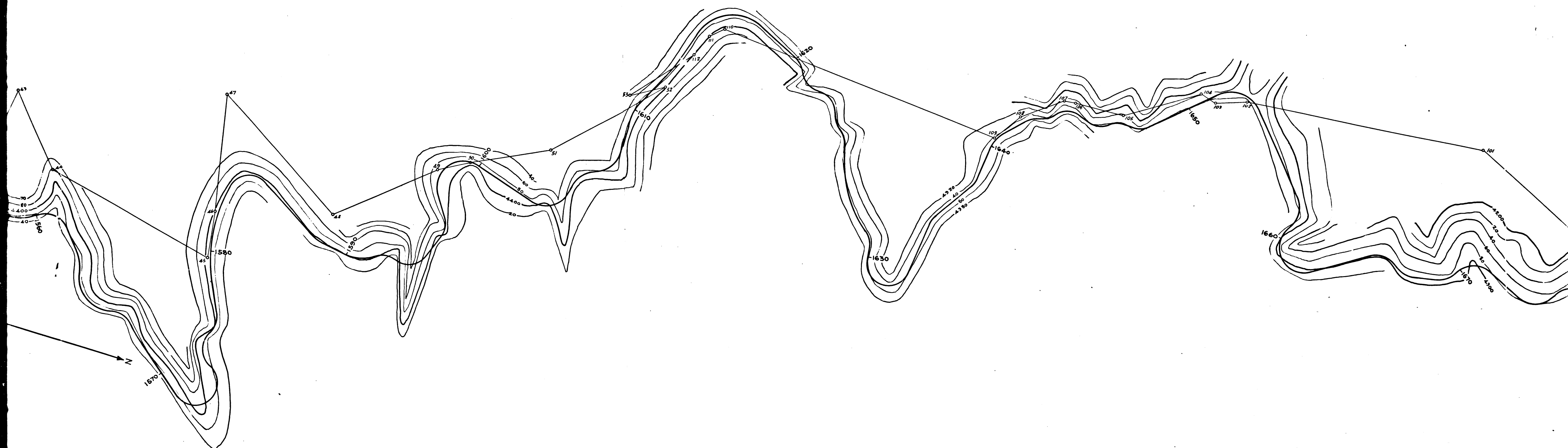




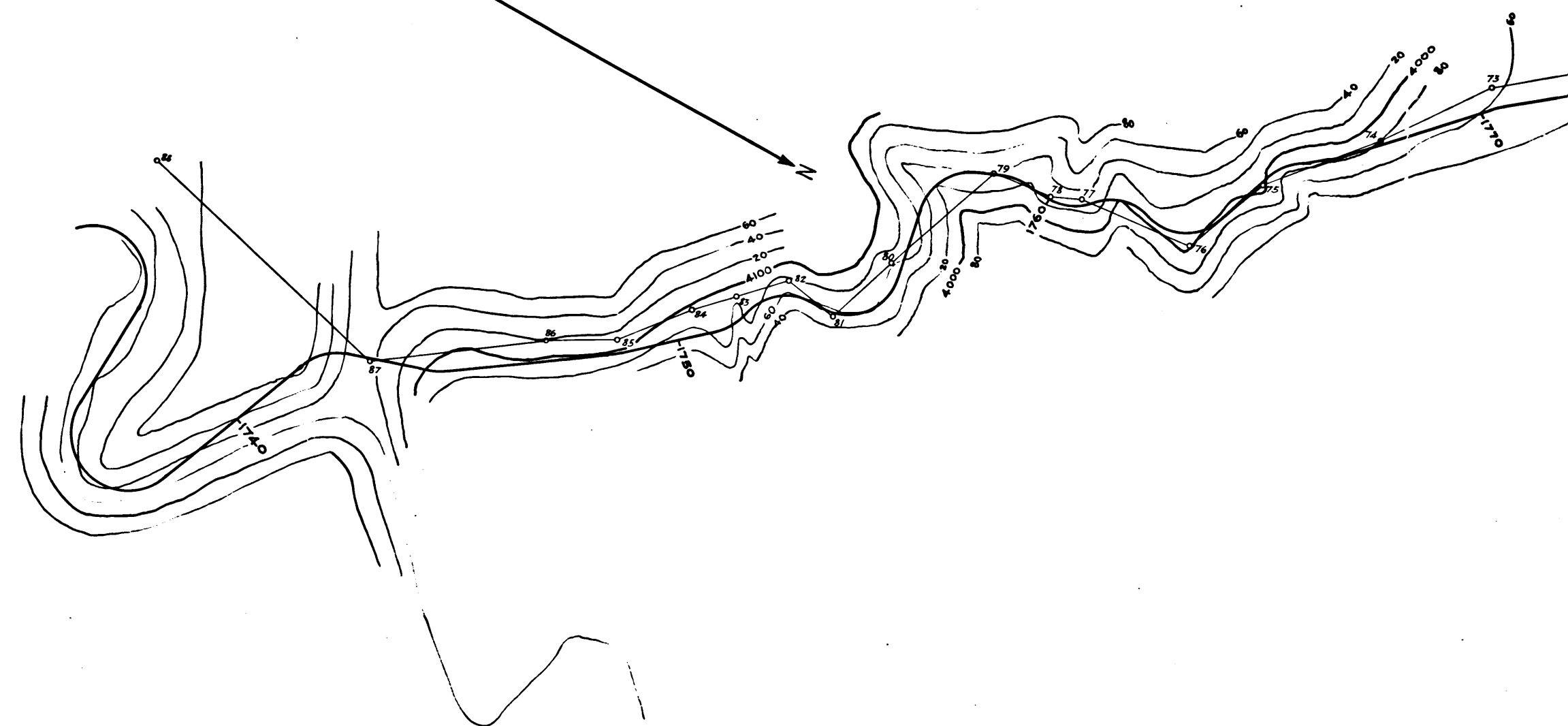
| | | | | |
|----|---|----|---|----|
| CS | 7 | 9 | 8 | 9 |
| A | 3 | OF | A | 11 |

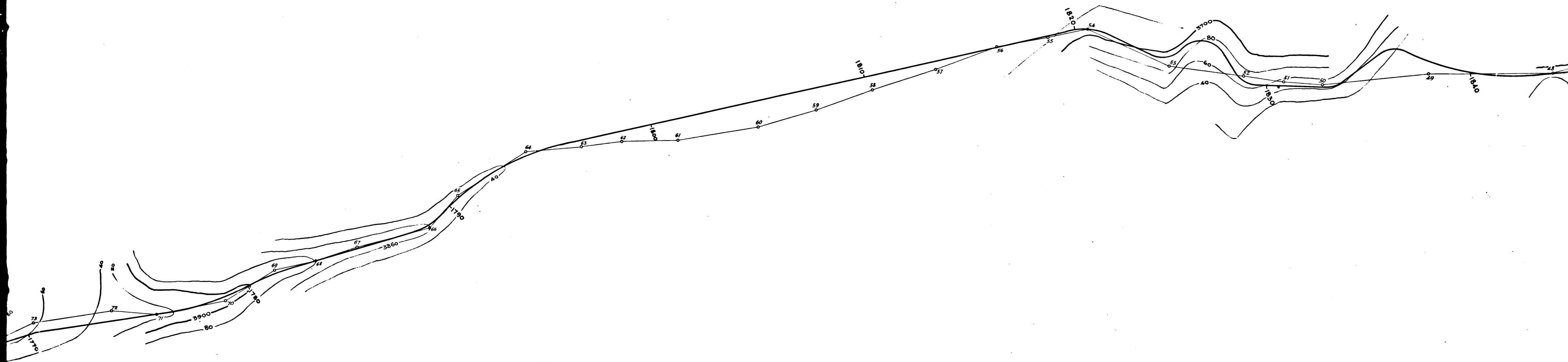


| | | | | |
|----|---|----|---|----|
| CS | 7 | 9 | 8 | 9 |
| A | 4 | OF | A | 11 |

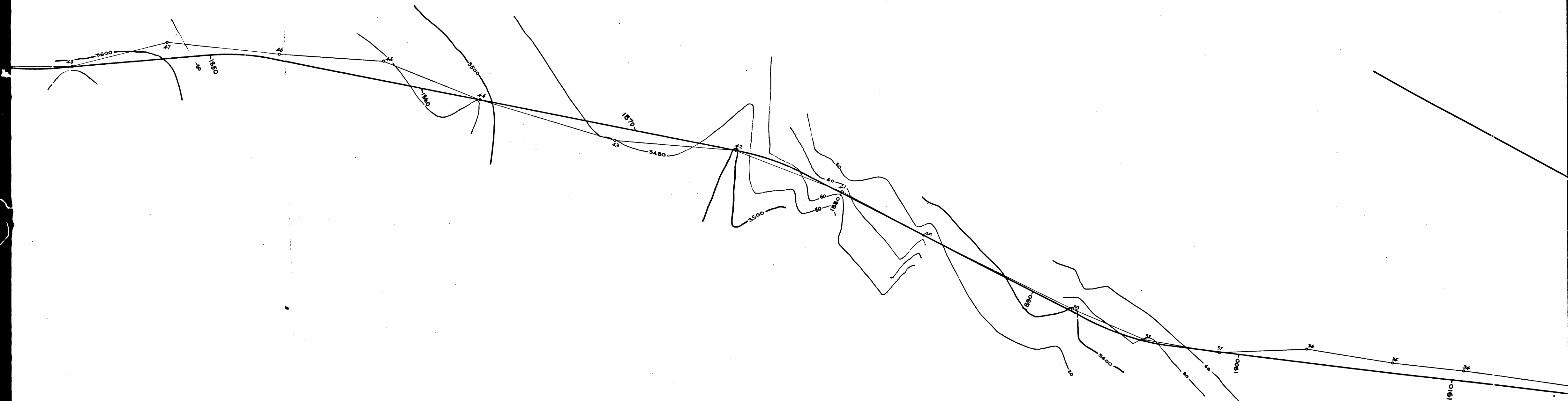


| | | | | |
|----|---|----|---|----|
| CS | 7 | 9 | 8 | 9 |
| A | 6 | OF | A | 11 |

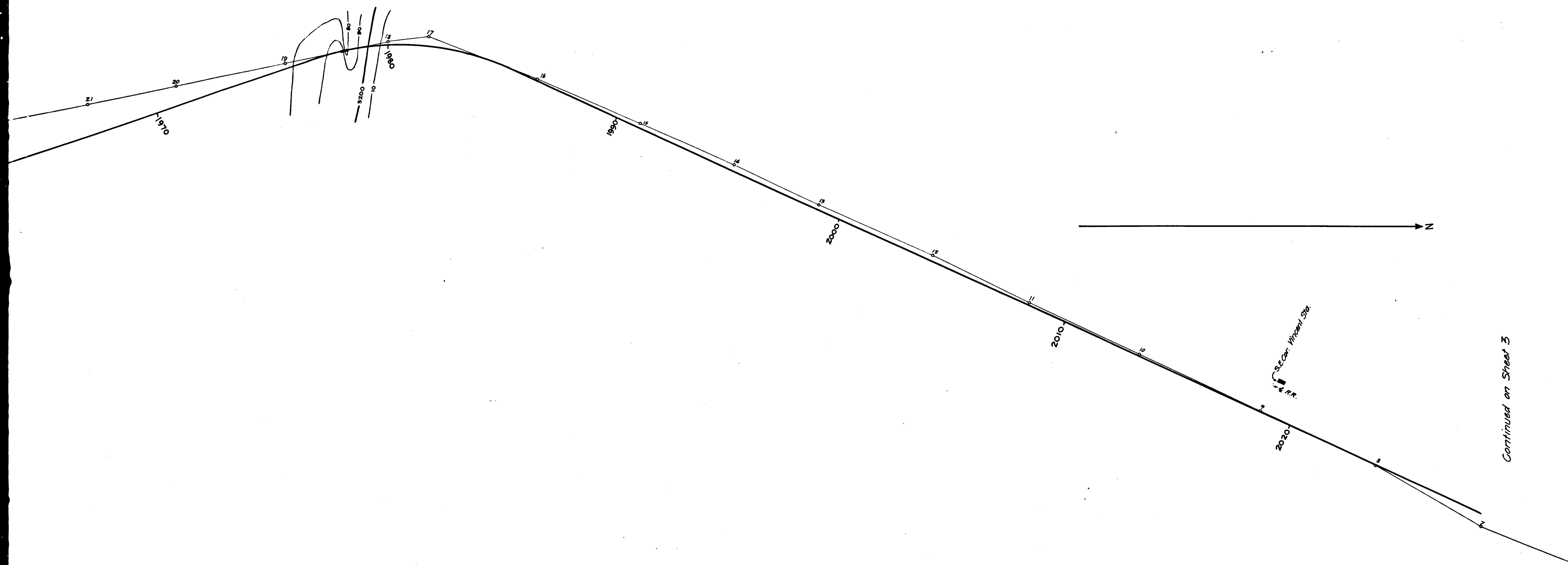




| | | | | |
|----|---|----|---|----|
| CS | 7 | 9 | 8 | 9 |
| A | 8 | OF | A | 11 |



| | | | | |
|----|---|----|---|----|
| CS | 7 | 9 | 8 | 9 |
| A | 9 | OF | A | 11 |



Continued on Sheet 3

| | | | | | | | |
|----|---|---|---|---|---|---|---|
| CS | 7 | 9 | 8 | 9 | | | |
| A | 1 | 1 | O | F | A | 1 | 1 |