

MAP SHOWING
PRELIMINARY AND PROJECTED LOCATION LINES
 FOR
A PROPOSED HIGHWAY
 BETWEEN
LOS ANGELES AND PALMDALE
 BEGINNING

AT THE INTERSECTION OF MICHIGAN AVENUE
 AND SCHOOL STREET, NEAR LA CAÑADA, AND RUNNING
 VIA ARROYO SECO, BIG TUJUNGA CREEK, MILL
 CREEK AND VINCENT, TO PALMDALE.

Surveyed February to May, 1914, under the
 direction of IVORY B. NOBLE, County Surveyor
 of Los Angeles County.
 For Field Notes see Level Books 76-77-79-80.

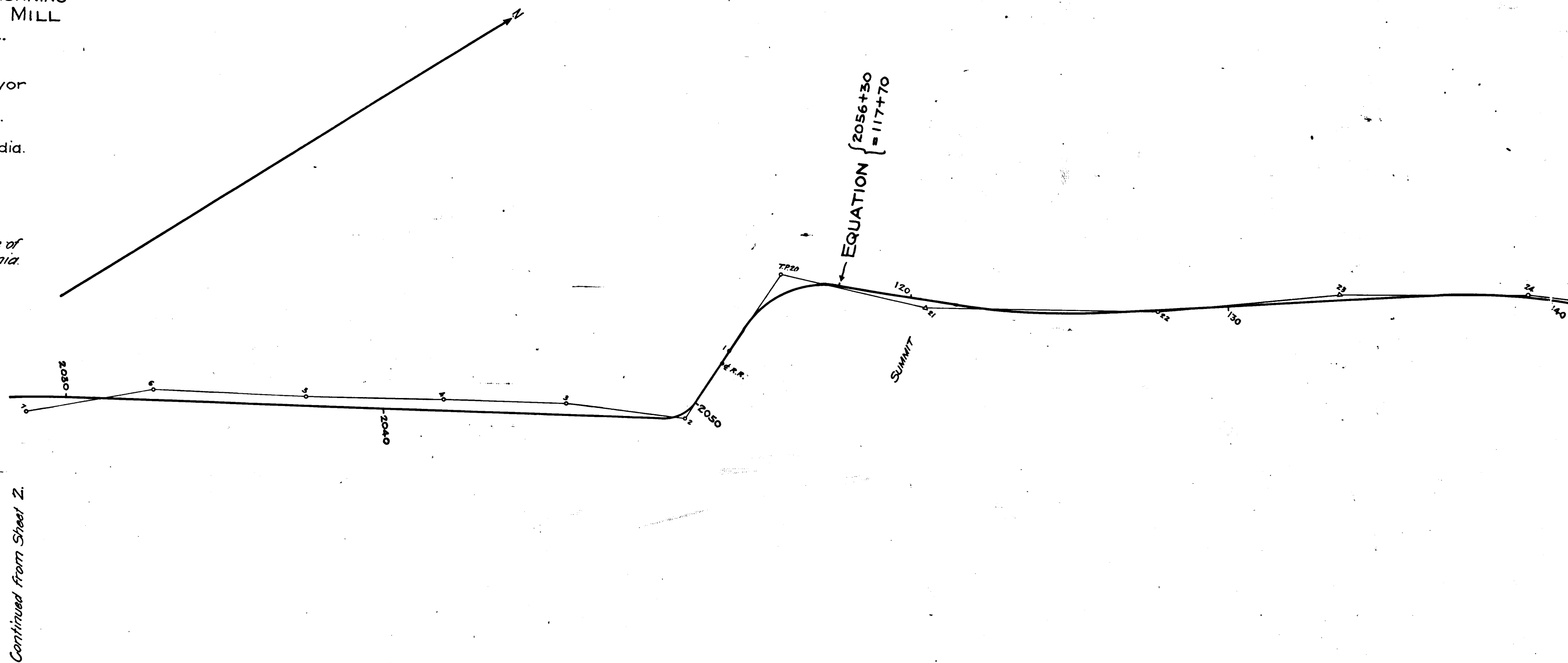
All Distances and Elevations were taken by Stadia.
 All Courses obtained by Needle Bearings.

SHEET 3 OF 3
 From VINCENT to PALMDALE

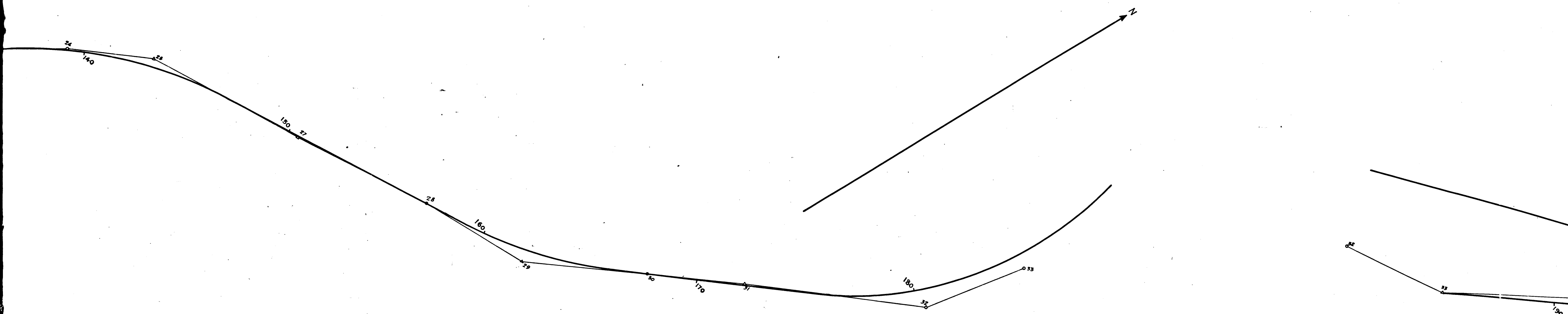
Traced from C.S. Map Nos. 7985 & 7990 on file in the Office of
 The County Surveyor of Los Angeles County, California.

SCALE: 1" = 200'

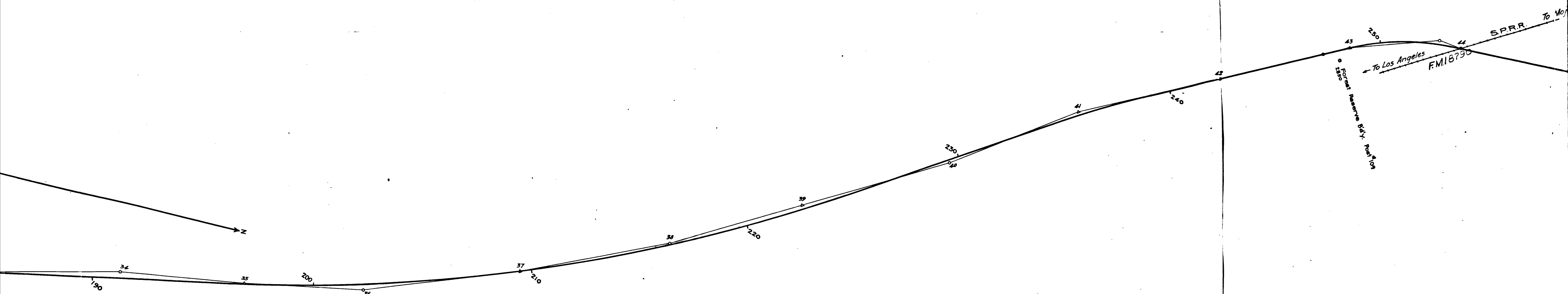
I.M. 65



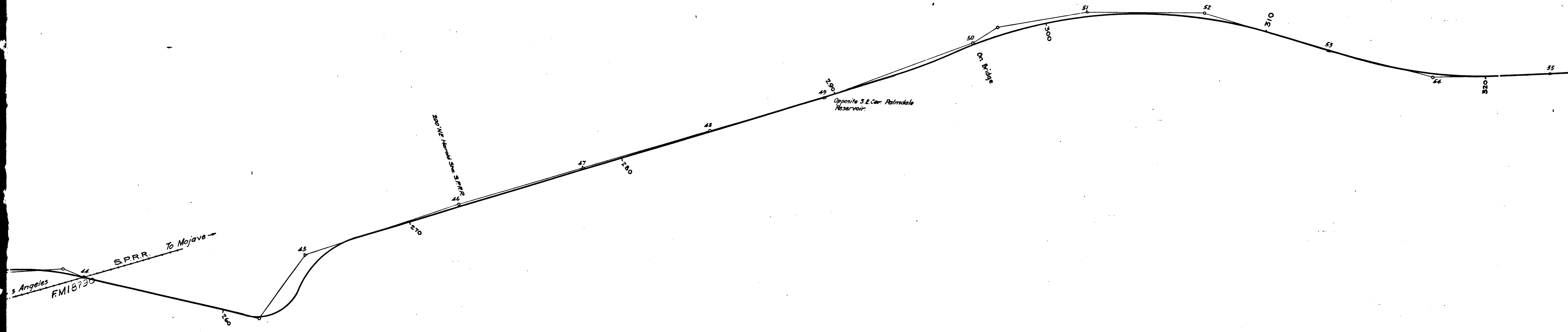
	C	S	7	9	9	0
	A	1	O	F	A	6



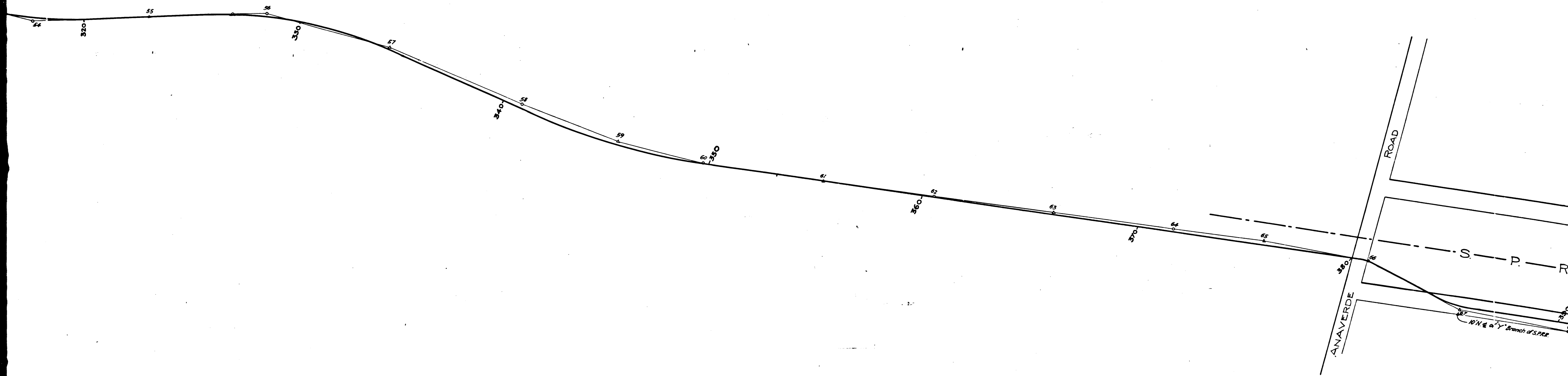
	C	S	7	9	9	0
	A	2	O	F	A	6



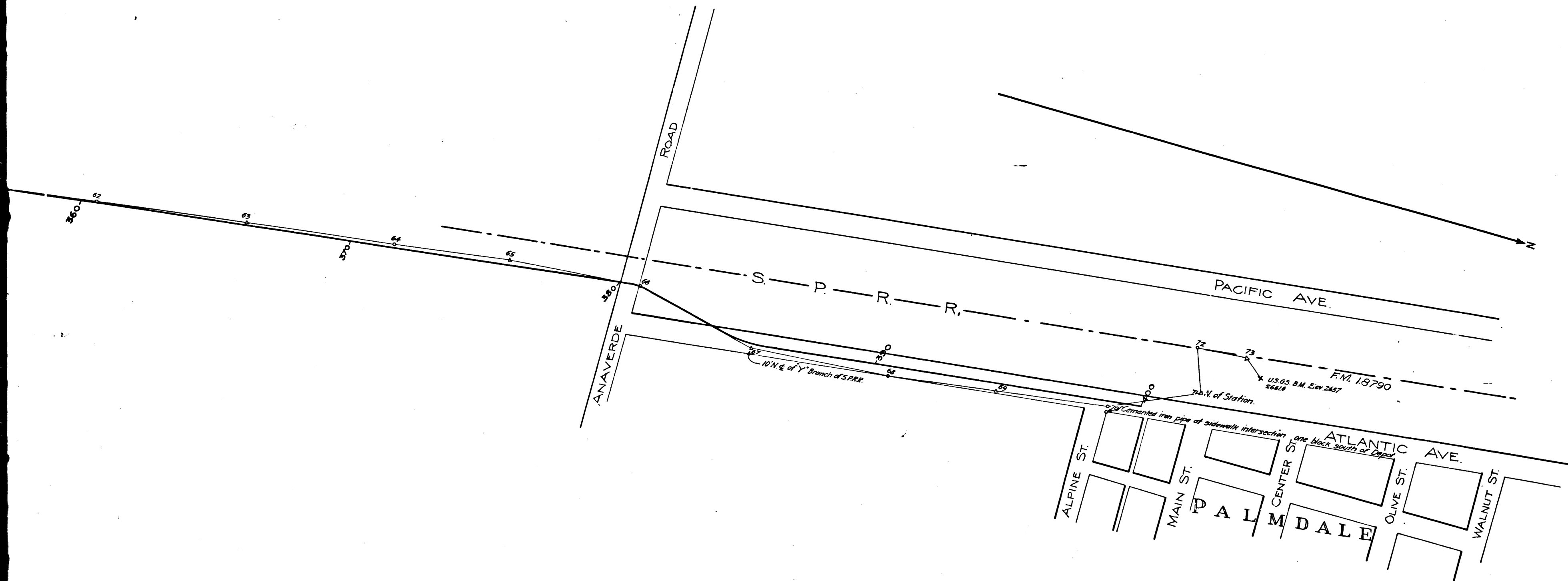
	C	S	7	9	9	0	
	A	3	O	F	A	6	



	C	S	7	9	9	0
	A	4	O	F	A	6



	C	S	7	9	9	0
	A	5	O	F	A	6



CS	7	9	9	0
A	6	OF	A	6