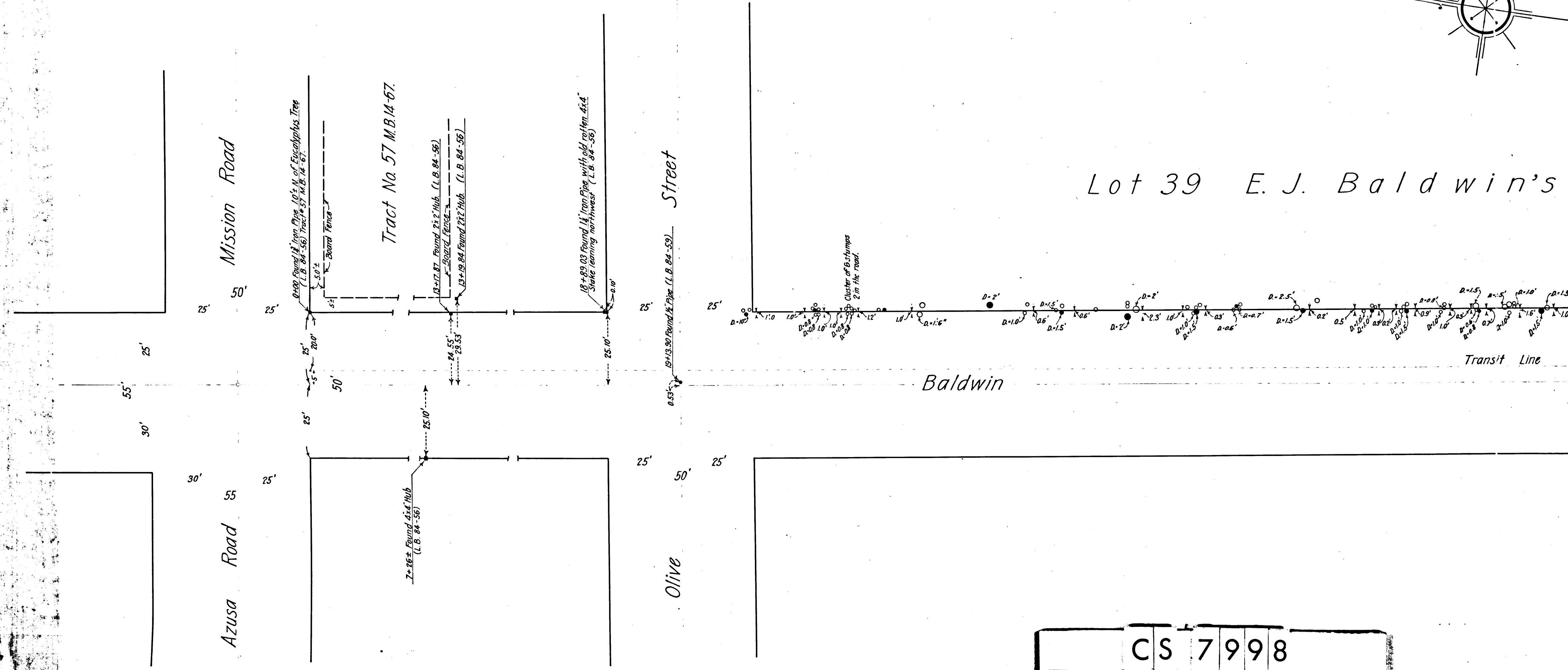


Lot 39 E. J. Baldwin's



CS	7	9	9	8
A	1	OF	A	2

# MAP OF BALDWIN AVE.

Showing location of trees cut in Lot 39 of E.J. Baldwin's  
Addition No. 1 to Santa Anita Colony, M.R. 52-60.

L.B. 84 - 56, 57, 59, 60.

I.B. NOBLE COUNTY SURVEYOR.

Scale 1 in. = 20 ft.

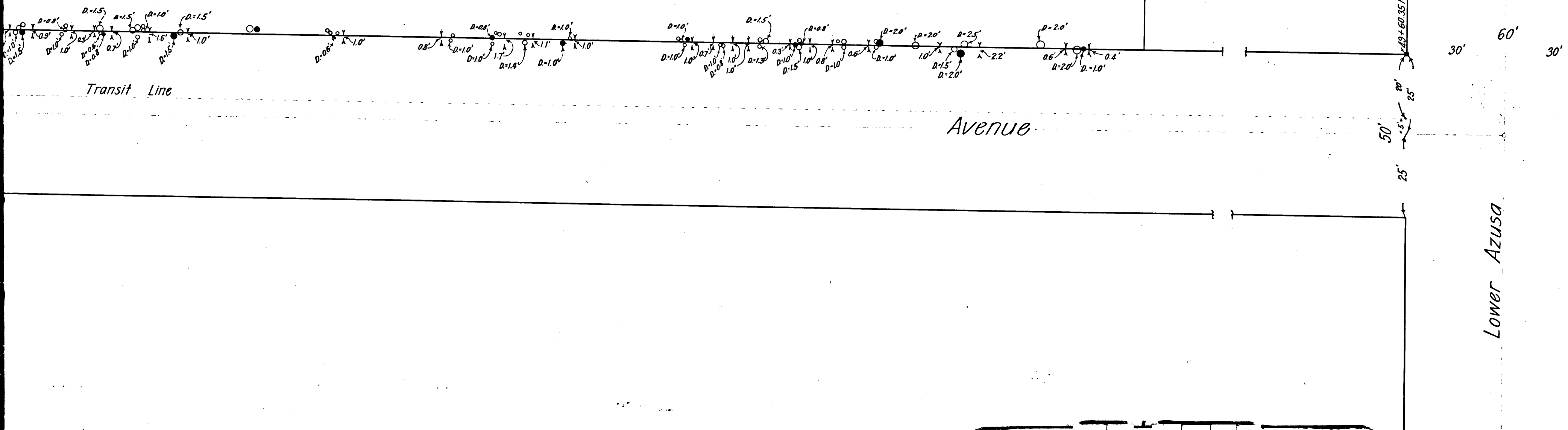
April 1915

I. M. 44

Note:

Eucalyptus trees shown thus - ●  
tree stumps - ○

Baldwin's Addition No. 1. M. R. 52 - 60.



L.B. 84 - 56, 57, 59, 60. E.J. Baldwin's Add. No. 1, M.R. 52-60.

CS	7	9	9	8
A	2	OF	A	2

Field work by Combs.  
Office work by Doug Hill.  
Checked by Thomas.

