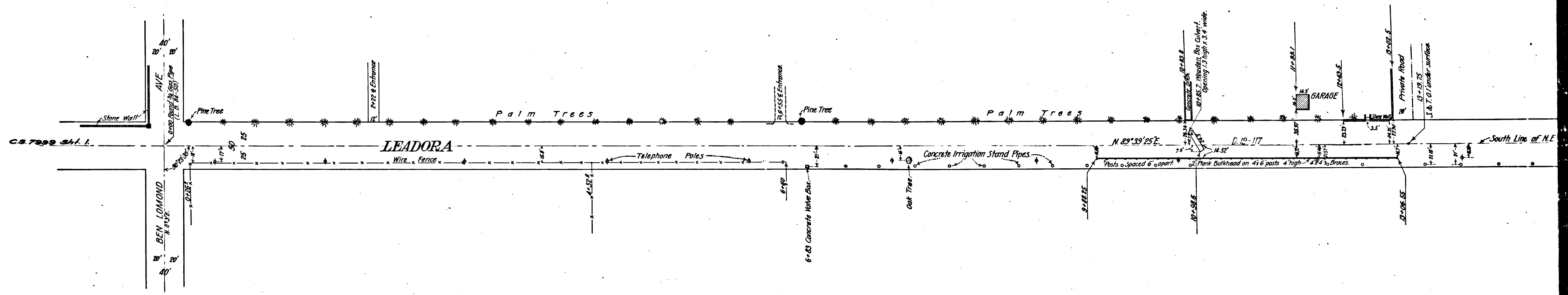


N.E. 1/4 Sec. 25, T.1N., R.10W., S.B.B. & 1A.



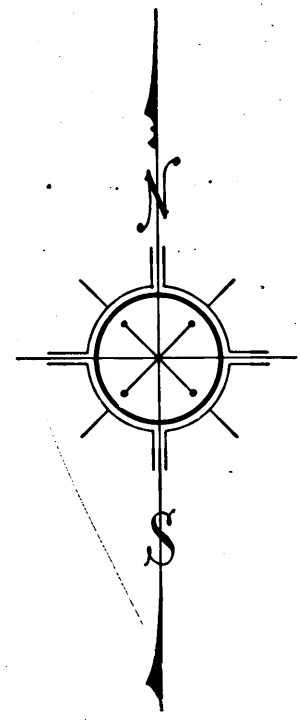
C	S	7	9	9	S	H	T.	2
A	1	O	F	A	2			

Sheet No. 2.  
 Map Showing Location of  
**BULKHEAD**  
 ON  
**LEADORA AVENUE**  
 In Section 25 T.1N., R.10W. S.B.B.&M.

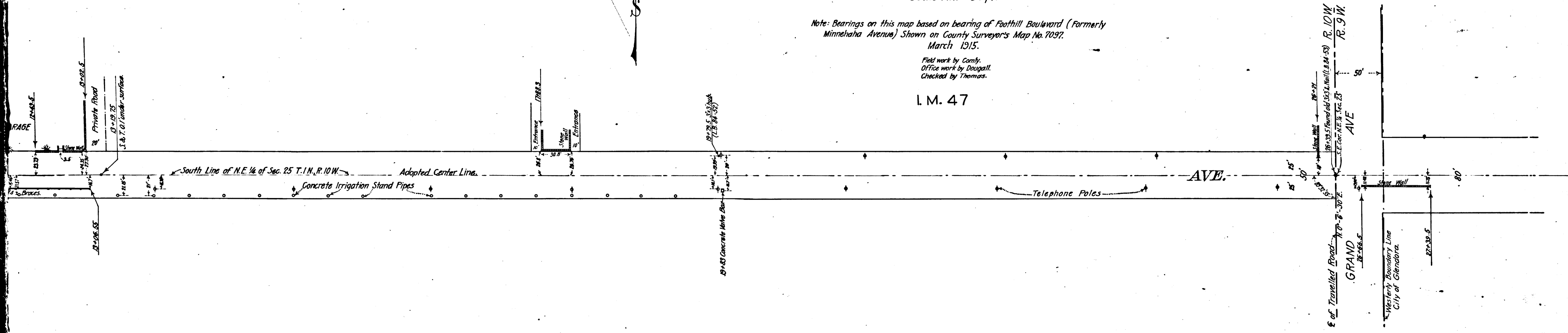
L.B. 84 - 50 to 53.  
 I.B. NOBLE COUNTY SURVEYOR.  
 Scale 1 in. = 50 ft.

Note: Bearings on this map based on bearing of Foothill Boulevard (Formerly  
 Minnehaha Avenue) Shown on County Surveyor's Map No. 7097.  
 March 1915.  
 Field work by Comly.  
 Office work by Dougall.  
 Checked by Thomas.

L.M. 47



25, T.1N., R.10W., S.B.B. & M.



CS	7	9	9	SHT.	2
A	2	OF	A	2	