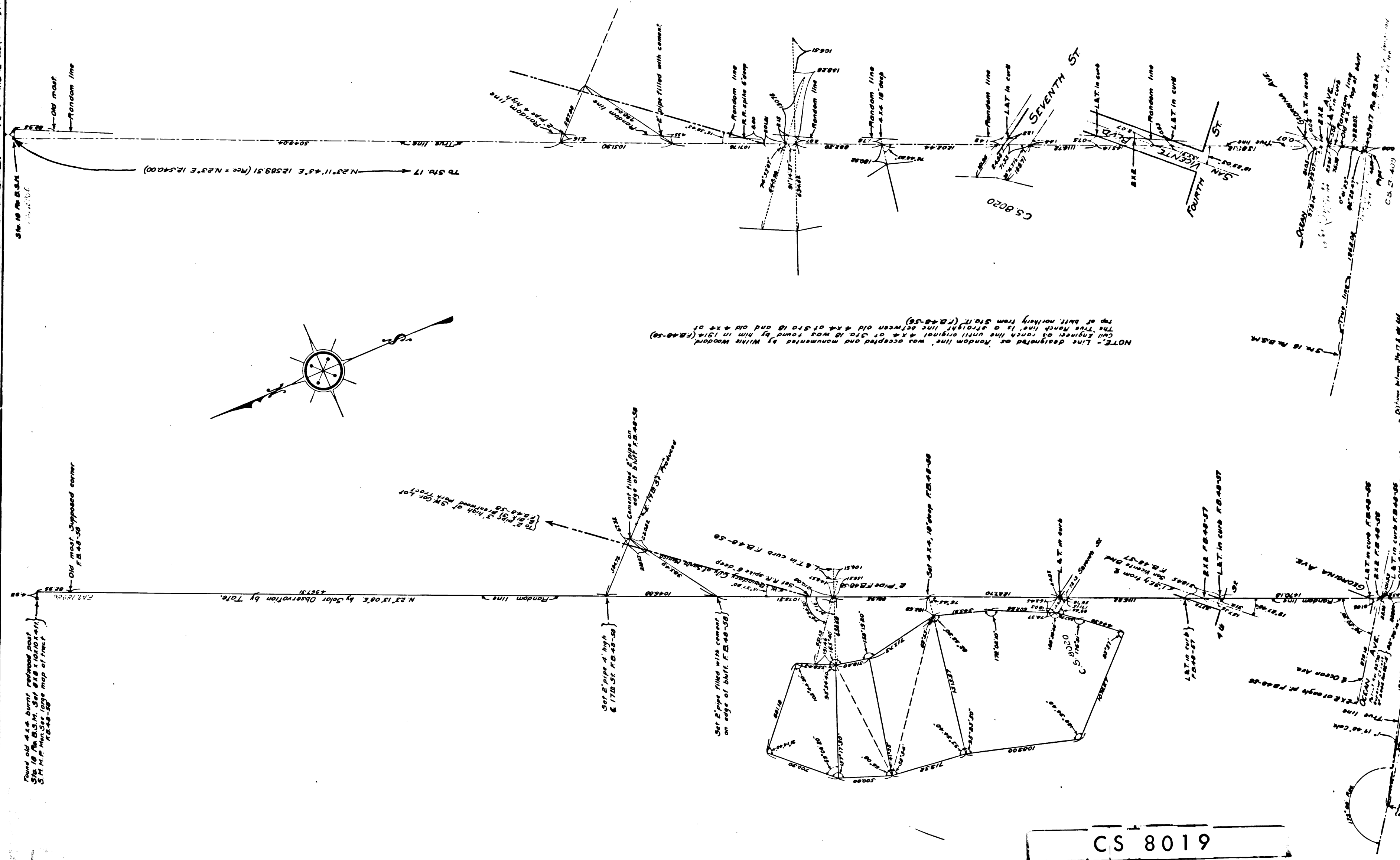


CS 8019



NOTE: Line designated as "Random line" was accepted and monumented by Willie Woodard. The "True line" is a straight line between old & new Sta 18 and old & new Sta 19. The "True line" is a straight line between old & new Sta 18 and old & new Sta 19. The "True line" is a straight line between old & new Sta 18 and old & new Sta 19.

MAP OF
EASTERLY BOUNDARY LINE
RANCHO BOCA DE SANTA MONICA
 (COURSE NR 17, PG 15, BOOK 3 OF PATENTS)
 SHOWING
TRUE RANCH LINE AS ADOPTED BY COUNTY SURVEYOR
RANGLON LINE AND ADJUTED TIES TO
AS SURVEYED BY W. K. F. WOODWARD, OCT 28, 1918
MARY B. NOBLE, COUNTY SURVEYOR
 Field work by J. M. Tolson
 Office work by Mary B. Noble
 Checked by Mary B. Noble
 Map made by County Surveyor

PACIFIC OCEAN

Found old 4.5" buried railroad post
 Sta 18, N. B. S. M. 3rd 818 10/20/11
 S. M. H. M. See large map of tract
 18-48-58

N 23° 13' 00" E by Solar Observation by Tolson
 15373

Set 2 pipe 4" high
 6 1728.55, 18-48-58

Set 2 pipe filled with cement
 on edge of bluff, 18-48-58

Sta 18 Rancho Boca
 of Santa Monica
 18-48-58