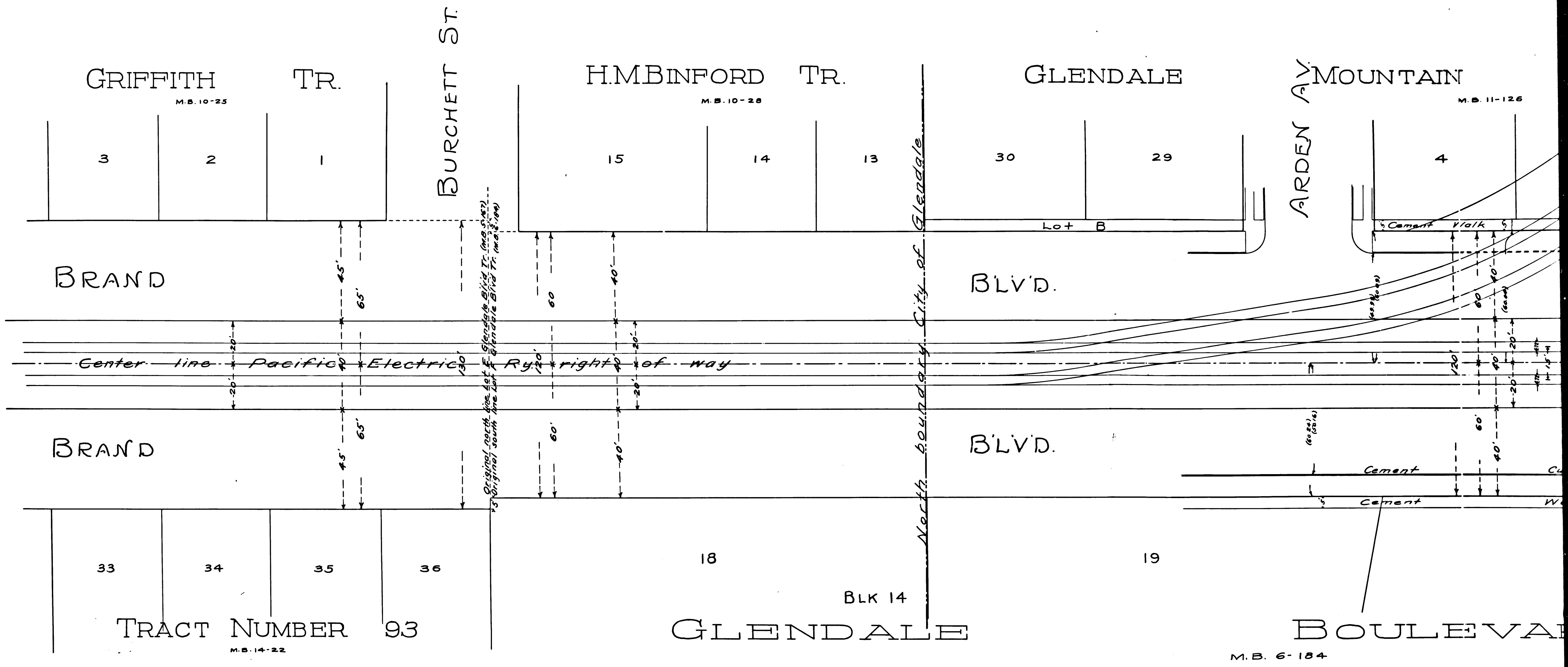


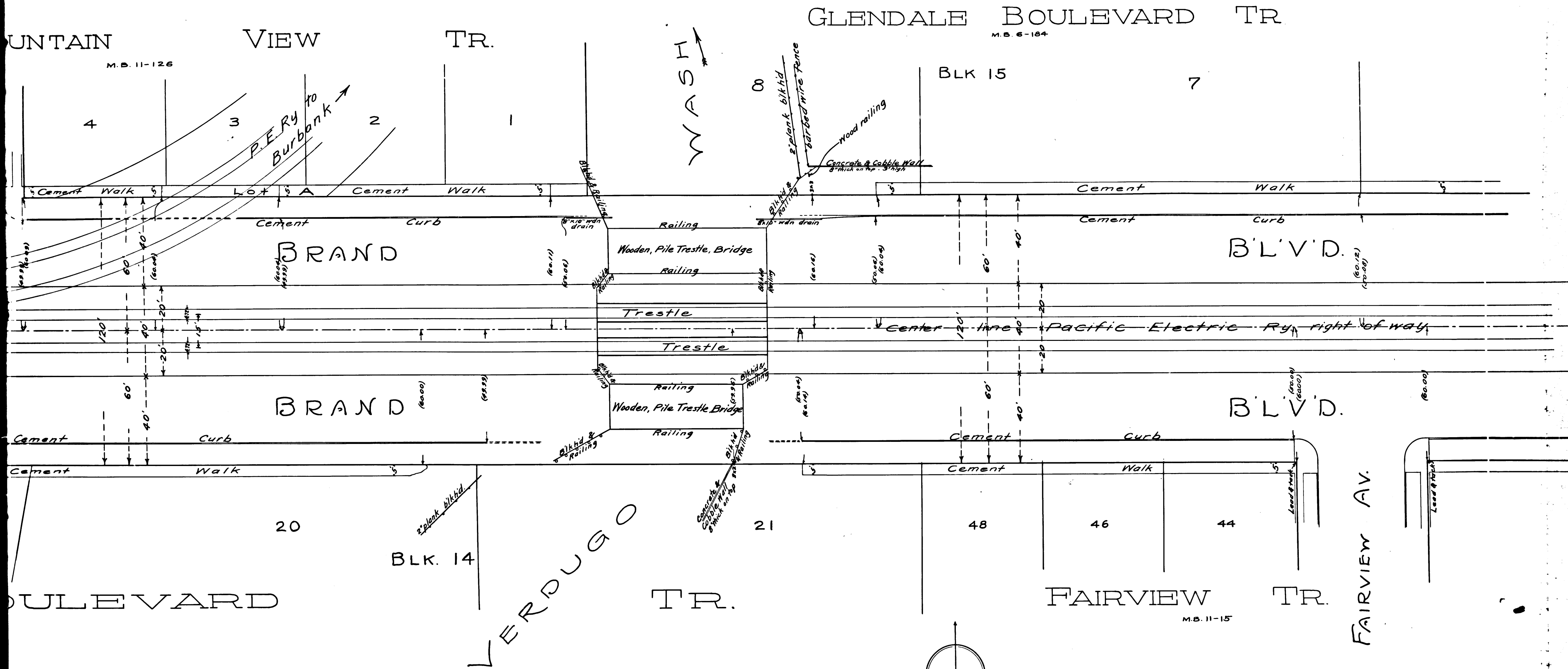
Note Lot E, Glendale Blvd Tr. (M.B. 5-167); Lot F, Glendale Blvd Tr. (M.B. 6-184); and other Lots, (constituting Brand Blvd), except the center 40 feet, deeded to County of Los Angeles by L.C. Brand et al.; recorded in Deed Book 3936, page 136.

The center 40 feet of Lots E, F, etc. deeded for right of way; see Deed Book 2632 page 215.



CS	8031
A1	OF A2

Note



Note: Figures in parentheses, (), are measurements as taken to existing points.

SURVEY & MAP by W.C. WATTLES
 Oct. 1913 Dep. C. Surveyor.
 85.46-46 SCALE: 1 inch = 20 feet.

I.M. 41

CS	8031
A2	OF A2