

9 57

VENCO
MEMPHIS, TN

50 TH

C.S. 8067, 3573
N 89° 47' 25" W

LLANO & COUNTY LINE ROAD

Center, Sec. 28
T. 5 N., R. 10 W.
S. 1/4, 1/2, 3/4
44 acres from
C.S. 8067, 3573
(C.S. 8067, 3573)
(C.S. 8067, 3573)

N 0° 03' 40" E - 2647.70

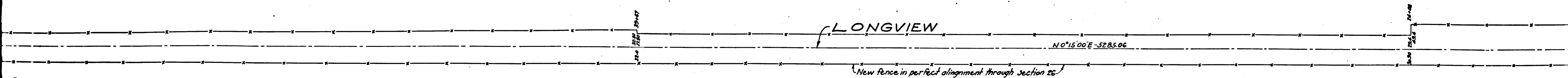
(For Resurvey See C.S. 8770)

Palmdale Valleyman Rd
E.M. 18490

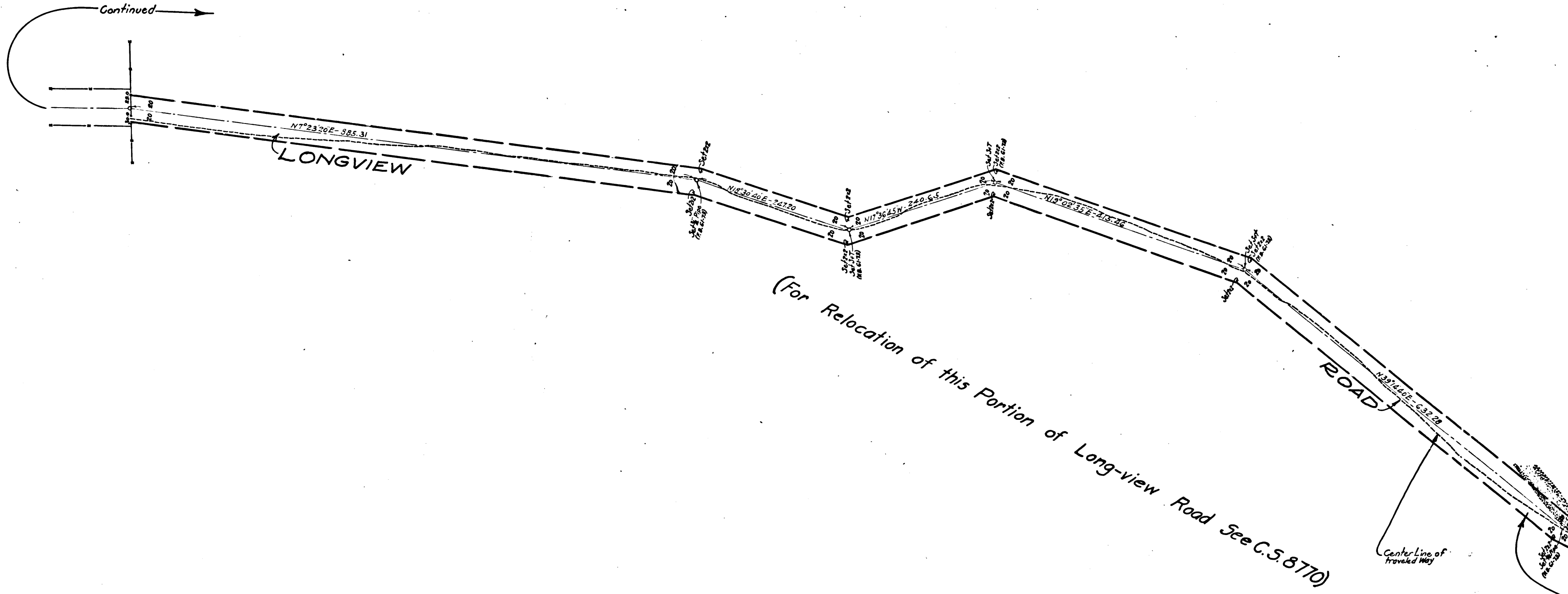
TRAVELED RR

TRAVELED RR

C	S	8	0	9	9
A	1	O	F	A	3



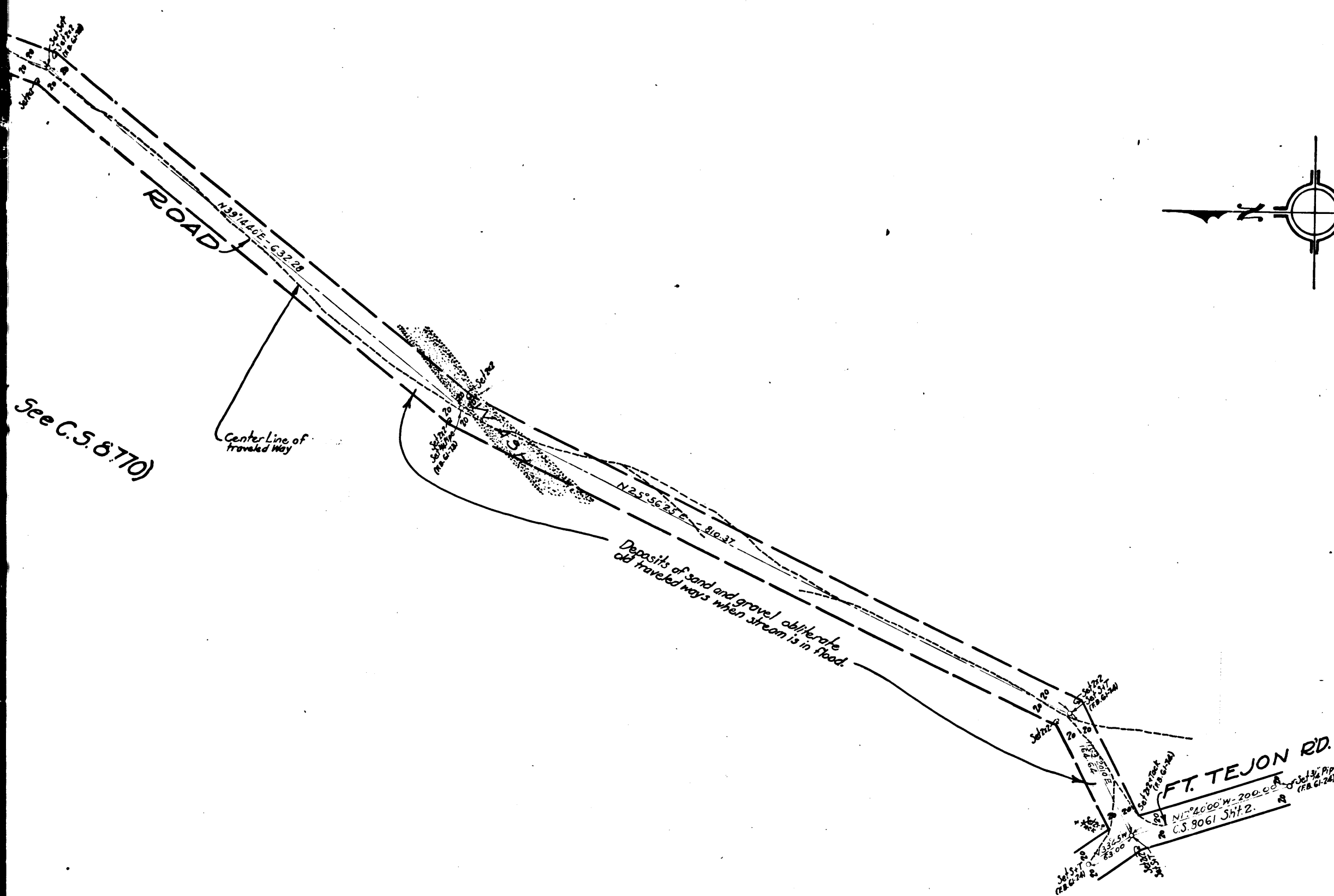
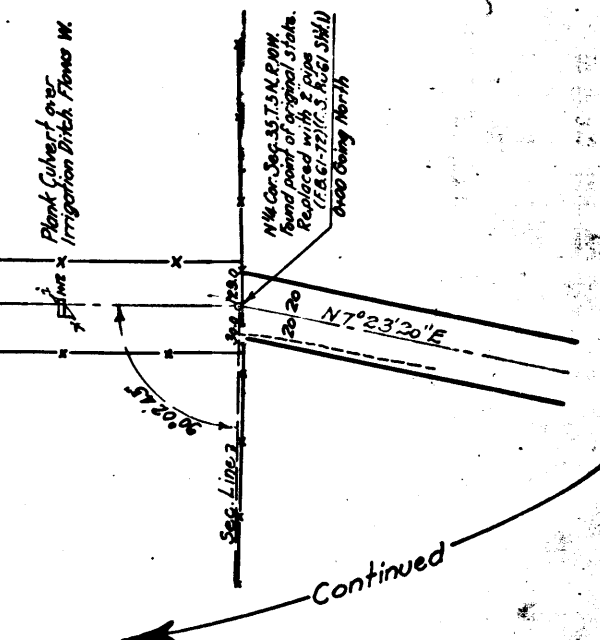
(For Resurvey See C.S. 8770.)



C	S	8	0	9	9
A	2	O	F	A	3

(For Resurvey See C.S. 8770.)

ROAD
Several traveled ways between fences taking up whole distance between Pecos (28.6172)



MAP OF
LONGVIEW ROAD
FROM
LLANO & COUNTY LINE ROAD
TO
FORT TEJON ROAD
IN
T. 5 N., R. 10 W., S. B. M.

J.E. ROCKHOLD, COUNTY SURVEYOR
SCALE 1 in = 100 FT.
BASE OF BEARINGS SAME AS ON C.S. 8061 SHEET.
F.B. 61-71 to 74
Field Work by Marsh, Oct. 10.
Office " " Uman, Feb. 17.
Checked " Marsh, Feb. 17.
Sht. 15

Palmdale-Valermo Road (in Sec. 23-5N-10W) changed to Pear Blossom Highway D: 49-25 R.B. 36-88
C.S. 8099
Long View Road name established - D: 49-51 Min. Bk. 120-118
Per. Long View Rd. changed to 132nd St. East - D: 49-149

CS	8099
A 3	OF A 3

