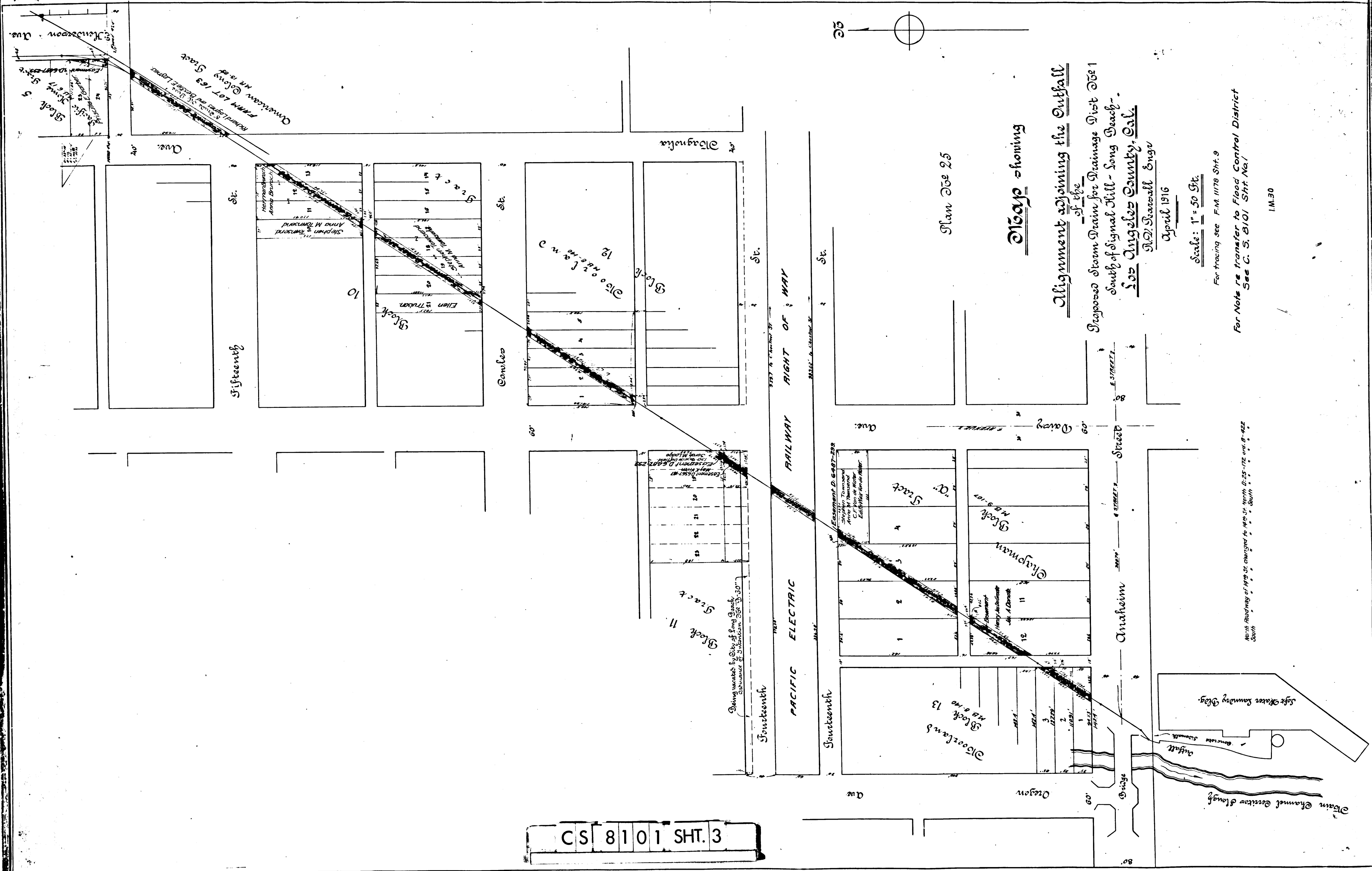


CS 8101 SHT. 3



Plan 256 25

Plans showing

Alignment Joining the Outfall

of the Proposed Storm Drain for Drainage District 2561

South of Signal Hill - Long Beach -

Los Angeles County, Cal.

J. D. Strossell Engr.

April 1916

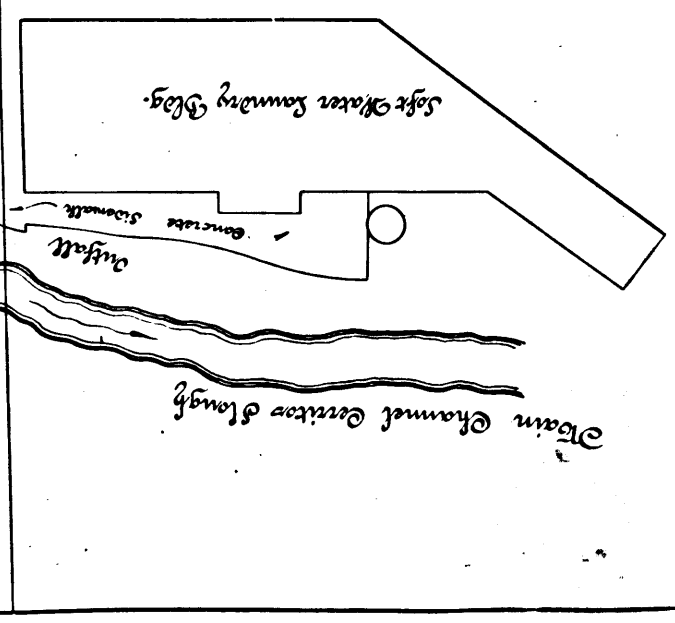
Scale : 1" = 50 Feet

For tracing see F.M. 1178 Sht. 9

For Notes re transfer to Flood Control District See C. S. 8101 Sht. No. 1

I.M. 30

North boundary of 19th St. changed to 19th St. north 21-25-172 and 6-182 South



Fifteenth

Combes

Southenth

Southenth

Anaheim

Street

Street

RAILWAY RIGHT OF WAY

PACIFIC ELECTRIC

21st St

St.

St.

Ave.

Street

Street

Street

Street

Street

Street

Street

Street

Street

Street

Street

Street

Street

Street

Street

Street

Street

Street

Street

Street

Street

Street

Street

Street

Street

Street

Street

Street

Street

Street

Street

Street

Street

Street

Street

Street

Street

Street

Street

Street

Street

Street

Street

Street

Street

Street

Street

Street

Street

Street

Street

Street

Street

Street

Street

Street

Street

Street

Street

Street

Street

Street

Street

Street

Street

Street

Street

Street

Street

Street

Street

Street

Street

Street

Street

Street

Street

Street

Street

Street

Street

Street

Street

Street

Street

Street

Street

Street

Street

Street

Street

Street

Street

Street

Street

Street

Street

Street

Street

Street

Street

Street

Street

Street

Street

Street

Street

Street

Street

Street

Street

Street

Street

Street

Street

Street

Street

Street

Street

Street

Street

Street

Street

Street

Street

Street

Street

Street

Street

Street

Street

Street

Street

Street

Street

Street

Street

Street

Street

Street

Street

Street

Street

Street

Street

Street

Street

Street

Street

Street

Street

Street

Street

Street

Street

Street

Street

Street

Street

Street

Street

Street

Street

Street

Street

Street

Street

Street

Street

Street

Street

Street

Street

Street

Street

Street

Street