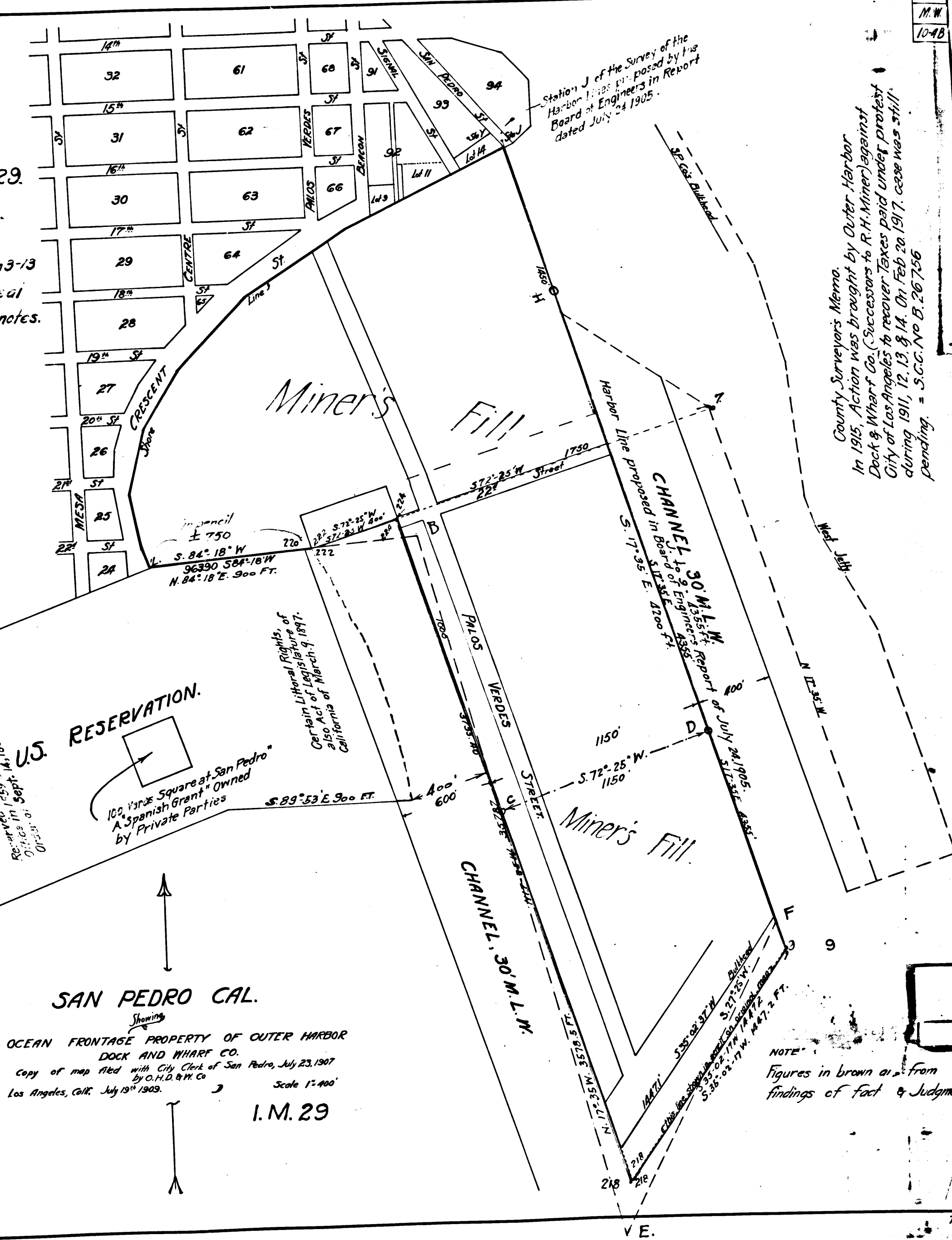


PHS Ex. 7  
Filed Apr 30-12

S.C.C. #s 76228 & 76229.  
A.S. KCYER.  
vs.  
RANDOLPH H. MINER.  
Judgment favor Uetas Jun 3-13  
Appealed - Affirmed on Appeal  
Apr 4-16 As per brown notes.

*County Surveyors Memo.*  
Note: All Lines & Figures in blue are from a map marked Defts Ex. Z in S.C.C. 84752. From information in that case, the dashed blue line denotes the boundary of fill proposed to be made by R. H. Miner. In his application to the War Department, Full Blue line shows boundary as described in War Department Permit to R. H. Miner, dated July 24 1905. The S. 17° 25' E. 4355' to Sta 9, the S. 35° 02' 17" W. 1447' to Sta 218, the N. 17° 35' W. 3578.7' to Sta 224, which bears S. 72° 25' W. 1750' from Sta 9, the S. 72° 25' W. 1150' to Sta 1150, the N. 17° 35' W. 1008' the West Channel, was extended to Sta L. the N. E. along shore to Sta. in Case M. 17527 and therefore Miners fill, as shown in black on this map, is the line Station Numbers in this vicinity, were also changed at that time.



SAN PEDRO CAL.  
OCEAN FRONTAGE PROPERTY OF OUTER HARBOR DOCK AND WHARF CO.  
Copy of map filed with City Clerk of San Pedro, July 23, 1907  
by O.H.D. & W. Co. Los Angeles, Cal. July 19<sup>th</sup> 1909. Scale 1" = 400'  
I.M. 29

County Surveyors Memo.  
In 1915, Action was brought by Outer Harbor Dock & Wharf Co. (Successors to R. H. Miner) against City of Los Angeles to recover Taxes paid under protest during 1911, 12, 13, & 14. On Feb 20 1917, case was still pending. = S.C.C. No. B. 26756

So. Dist  
M. W.  
10-18

CS 8109

NOTE  
Figures in brown are from findings of fact & Judgment