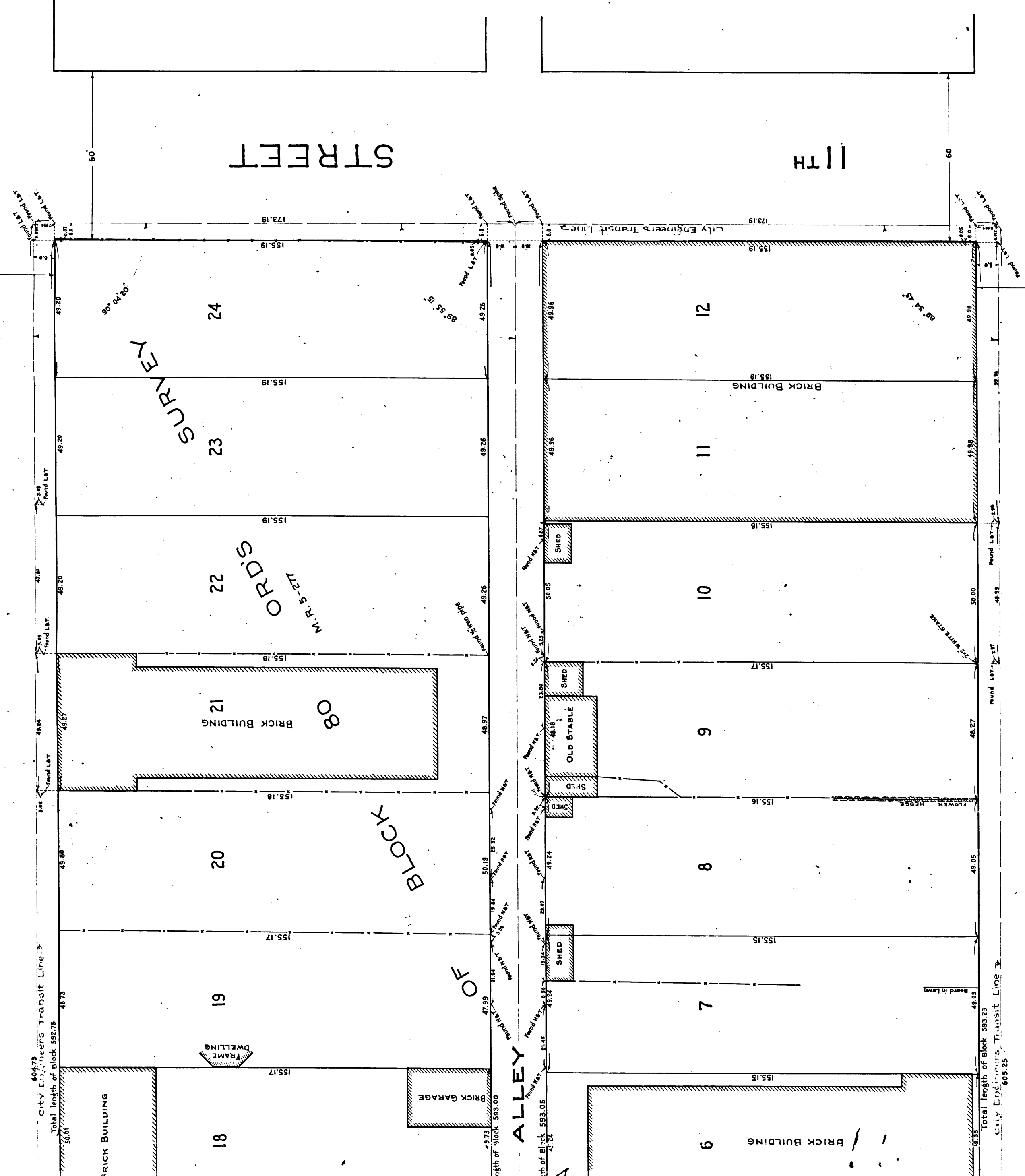


STREET

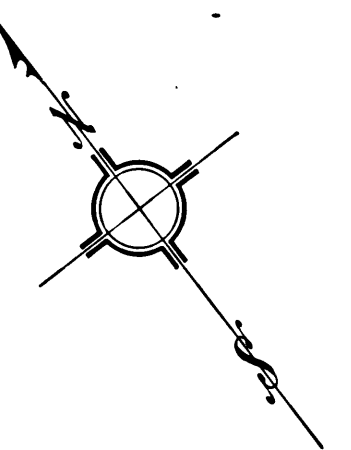
STREET

11TH

STREET



CS 8144
 A2 OF A2



MAP
 SHOWING SURVEY OF
 SPENCER'S SUBDIVISION OF BLOCK 80 ORD'S SURVEY
 RECORDED IN BOOK 5, PAGE 277, OF
 MISCELLANEOUS RECORDS OF LOS ANGELES COUNTY
 COUNTY SURVEYORS MAP NO. 8144
 Alfred Jones, Acting County Surveyor
 SURVEYED, APRIL & MAY, 1918
 SCALE: 1 inch = 20 feet.
 Surveyed under instructions of the Board of Supervisors per order dated April 16, 1918

F. B. 53-104-113
 Surveyed by.....Comly
 Plotted by.....McMillan,
 Checked by.....Comly