

Found mound of rocks with flag in middle on top of same. This stake is blazed both sides and scribbled 15 on one side and 18 on other. Mr. W.F. Smith saw old stake here as early as 1883 and says C.L. Varner who homesteaded S.E. 1/4 of Section 18 in 1880, had the mound of rocks at corner of next mound as position of original stake but where it is a witness corner, although notes do not call for a witness corner. However the notes do not correspond at all with the mound of rocks. The mound of rocks is a concrete pile with a wooden nail in or near bottom of pile. Set of stake 4' high in concrete filled with concrete and placed old stake in top with 15' stake. P.B. 60-55

18

S.G. Chamberlin, City Engineer of San Francisco, made surveys along this line in 1880. His witness stake is to be about 200' South of where it should be for position of Section Corner.

Note: On Aug. 4, 1922 Mr. Welsh owner of S.E. 1/4 of Sec. 18 stated that he accepts this as his N.E. corner. A.U.

See also L.S. 12-40 2-17-23

17

Section Corner Found 516" post 2 1/2" high in mound of rocks under fence. Scribbled 5 18 on N side 5 18 on E side. This post was concealed in 1880. All said it was generally known to be a reliable corner. P.B. 60-56

Calculated position of Section Corner Not finally established and Section Corner by Co. Surveyor

See L.S. 12-40 for accepted corner 2-17-23

Calculated position of Section Corner Not finally established by Co. Surveyor

See L.S. 12-40 for accepted Section Corner Also see P.B. 44-67 & 65-8-68

Calculated position of Section Corner Not finally established by Co. Surveyor

See L.S. 12-40 for accepted Section Corner

Calculated position of Section Corner Not finally established by Co. Surveyor

See L.S. 12-40 for accepted Section Corner

Calculated position of Section Corner Not finally established by Co. Surveyor

See L.S. 12-40 for accepted Section Corner

Calculated position of Section Corner Not finally established by Co. Surveyor

See L.S. 12-40 for accepted Section Corner

Calculated position of Section Corner Not finally established by Co. Surveyor

See L.S. 12-40 for accepted Section Corner

Calculated position of Section Corner Not finally established by Co. Surveyor

See L.S. 12-40 for accepted Section Corner

Calculated position of Section Corner Not finally established by Co. Surveyor

See L.S. 12-40 for accepted Section Corner

N 89° 56' 00" W 2669.63

N 89° 56' 00" W 2669.73

N 89° 56' 00" W 2669.73

N 89° 56' 00" W 2669.73

N 89° 56' 00" W 2669.73

N 89° 56' 00" W 2669.73

T.4 N.R.

MINT CANYON

19

Section Corner Found very old Juniper stake blazed S.W. 1/4 of Section 20 and has lived nearby since 1883. This stake has been here since 1883 and was an old stake they accepted this stake as original corner. Set of stake 4' high in concrete filled with concrete and placed old Section Corner P.B. 60-54

This stake replaced with a witness corner in 1922. See P.B. 44-67 & 65-8-68

Calculated position of Section Corner Not finally established by Co. Surveyor

See L.S. 12-40 for accepted Section Corner

Calculated position of Section Corner Not finally established by Co. Surveyor

See L.S. 12-40 for accepted Section Corner

Calculated position of Section Corner Not finally established by Co. Surveyor

See L.S. 12-40 for accepted Section Corner

Calculated position of Section Corner Not finally established by Co. Surveyor

See L.S. 12-40 for accepted Section Corner

Calculated position of Section Corner Not finally established by Co. Surveyor

See L.S. 12-40 for accepted Section Corner

Calculated position of Section Corner Not finally established by Co. Surveyor

See L.S. 12-40 for accepted Section Corner

Calculated position of Section Corner Not finally established by Co. Surveyor

See L.S. 12-40 for accepted Section Corner

Section Corner Found very old Juniper stake blazed S.W. 1/4 of Section 20 and has lived nearby since 1883. This stake has been here since 1883 and was an old stake they accepted this stake as original corner. Set of stake 4' high in concrete filled with concrete and placed old Section Corner P.B. 60-54

This stake replaced with a witness corner in 1922. See P.B. 44-67 & 65-8-68

Calculated position of Section Corner Not finally established by Co. Surveyor

See L.S. 12-40 for accepted Section Corner

Calculated position of Section Corner Not finally established by Co. Surveyor

See L.S. 12-40 for accepted Section Corner

Calculated position of Section Corner Not finally established by Co. Surveyor

See L.S. 12-40 for accepted Section Corner

Calculated position of Section Corner Not finally established by Co. Surveyor

See L.S. 12-40 for accepted Section Corner

Calculated position of Section Corner Not finally established by Co. Surveyor

See L.S. 12-40 for accepted Section Corner

Calculated position of Section Corner Not finally established by Co. Surveyor

See L.S. 12-40 for accepted Section Corner

Calculated position of Section Corner Not finally established by Co. Surveyor

See L.S. 12-40 for accepted Section Corner

CS 8151
A1 OF A2

MAP SHOWING
SURVEY OF DIVIDING LINE BETWEEN
SECTIONS 20 AND 21. T. 4 N. R. 15 W. S. B. & M.

COUNTY SURVEYOR'S MAP NR. 8151
J. E. ROCKHOLD COUNTY SURVEYOR
SURVEYED MAY 1916.

SCALE INCH = 400 FEET

Surveyed under Instructions of the Board of Supervisors per Order dated May 15, 1916.

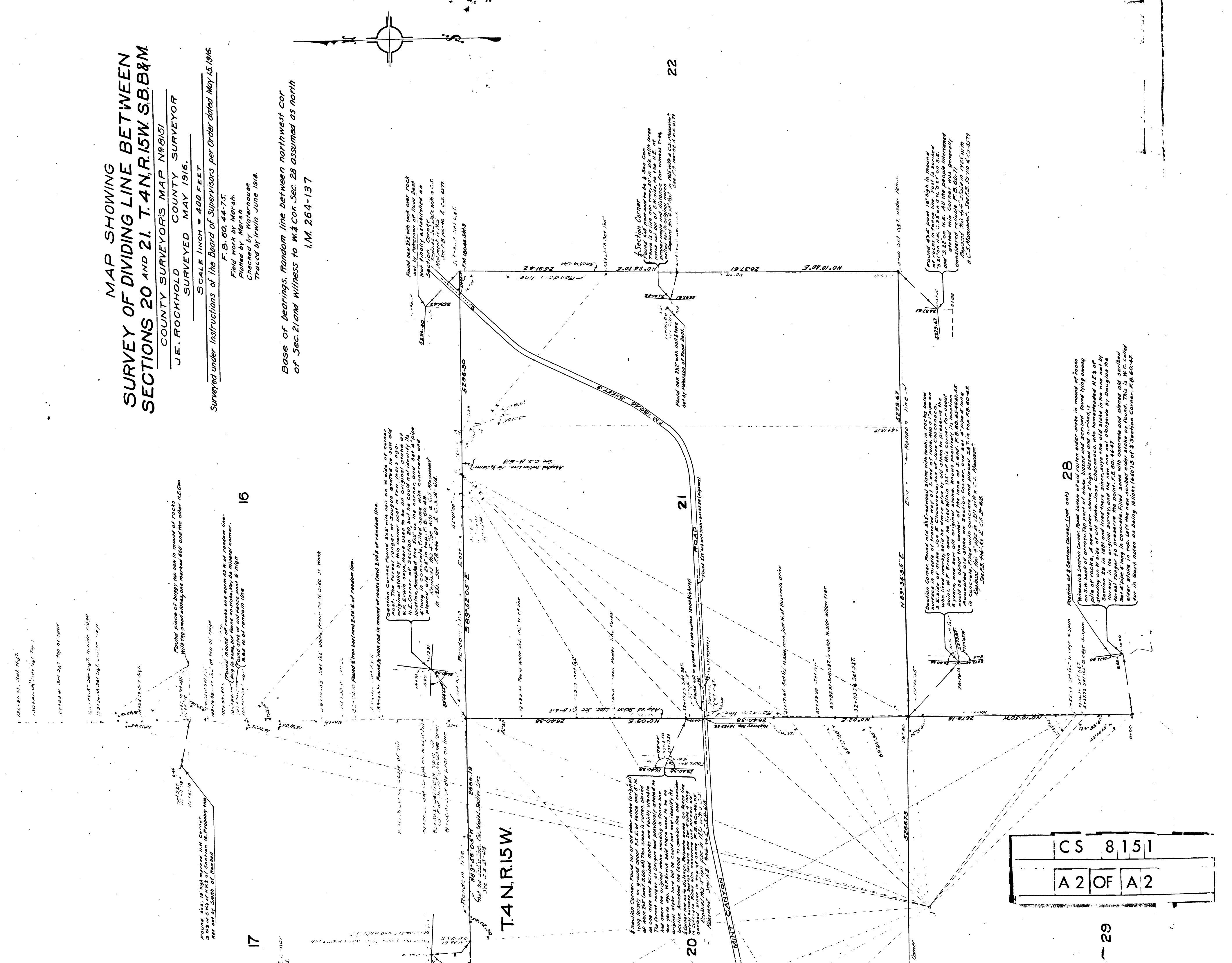
F. B. 60, 44-75

Field work by Marsh.

Checked by Waterhouse

Traced by Irwin June 1918.

Base of bearings, Random line between northwest cor
of Sec. 21 and witness to W. & Cor. Sec. 28 assumed as north
I.M. 264-137



Found piece of buggy tire in mound of rocks
with the small stakes one marked 660 and the other N.E. Cor.

Found 2 1/2" x 1 1/2" of top of nail
100' x 100' x 100' of top of nail
Found 2 1/2" x 1 1/2" of top of nail
Found 2 1/2" x 1 1/2" of top of nail

Found 2 1/2" x 1 1/2" of top of nail
Found 2 1/2" x 1 1/2" of top of nail
Found 2 1/2" x 1 1/2" of top of nail

Found 2 1/2" x 1 1/2" of top of nail
Found 2 1/2" x 1 1/2" of top of nail
Found 2 1/2" x 1 1/2" of top of nail

Found 2 1/2" x 1 1/2" of top of nail
Found 2 1/2" x 1 1/2" of top of nail
Found 2 1/2" x 1 1/2" of top of nail

Found 2 1/2" x 1 1/2" of top of nail
Found 2 1/2" x 1 1/2" of top of nail
Found 2 1/2" x 1 1/2" of top of nail

Found 2 1/2" x 1 1/2" of top of nail
Found 2 1/2" x 1 1/2" of top of nail
Found 2 1/2" x 1 1/2" of top of nail

Found 2 1/2" x 1 1/2" of top of nail
Found 2 1/2" x 1 1/2" of top of nail
Found 2 1/2" x 1 1/2" of top of nail

Found 2 1/2" x 1 1/2" of top of nail
Found 2 1/2" x 1 1/2" of top of nail
Found 2 1/2" x 1 1/2" of top of nail

Found 2 1/2" x 1 1/2" of top of nail
Found 2 1/2" x 1 1/2" of top of nail
Found 2 1/2" x 1 1/2" of top of nail

Found 2 1/2" x 1 1/2" of top of nail
Found 2 1/2" x 1 1/2" of top of nail
Found 2 1/2" x 1 1/2" of top of nail

Found 2 1/2" x 1 1/2" of top of nail
Found 2 1/2" x 1 1/2" of top of nail
Found 2 1/2" x 1 1/2" of top of nail

Found 2 1/2" x 1 1/2" of top of nail
Found 2 1/2" x 1 1/2" of top of nail
Found 2 1/2" x 1 1/2" of top of nail

Found 2 1/2" x 1 1/2" of top of nail
Found 2 1/2" x 1 1/2" of top of nail
Found 2 1/2" x 1 1/2" of top of nail

Found 2 1/2" x 1 1/2" of top of nail
Found 2 1/2" x 1 1/2" of top of nail
Found 2 1/2" x 1 1/2" of top of nail

Found 2 1/2" x 1 1/2" of top of nail
Found 2 1/2" x 1 1/2" of top of nail
Found 2 1/2" x 1 1/2" of top of nail

Found 2 1/2" x 1 1/2" of top of nail
Found 2 1/2" x 1 1/2" of top of nail
Found 2 1/2" x 1 1/2" of top of nail

Found 2 1/2" x 1 1/2" of top of nail
Found 2 1/2" x 1 1/2" of top of nail
Found 2 1/2" x 1 1/2" of top of nail

Found 2 1/2" x 1 1/2" of top of nail
Found 2 1/2" x 1 1/2" of top of nail
Found 2 1/2" x 1 1/2" of top of nail

Found 2 1/2" x 1 1/2" of top of nail
Found 2 1/2" x 1 1/2" of top of nail
Found 2 1/2" x 1 1/2" of top of nail

Found 2 1/2" x 1 1/2" of top of nail
Found 2 1/2" x 1 1/2" of top of nail
Found 2 1/2" x 1 1/2" of top of nail

Found 2 1/2" x 1 1/2" of top of nail
Found 2 1/2" x 1 1/2" of top of nail
Found 2 1/2" x 1 1/2" of top of nail

Found 2 1/2" x 1 1/2" of top of nail
Found 2 1/2" x 1 1/2" of top of nail
Found 2 1/2" x 1 1/2" of top of nail

Found 2 1/2" x 1 1/2" of top of nail
Found 2 1/2" x 1 1/2" of top of nail
Found 2 1/2" x 1 1/2" of top of nail

CS 8151
A 2 OF A 2