

DETAIL SKETCH

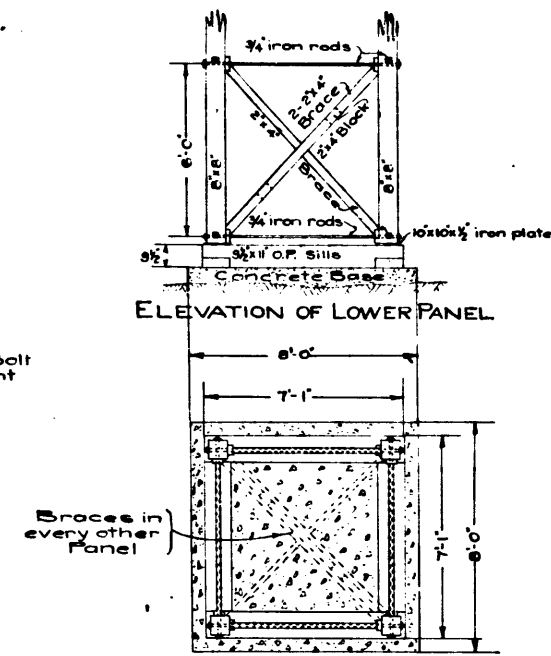
DETAIL SKETCH

DETAIL SKETCH

DETAIL SKETCH

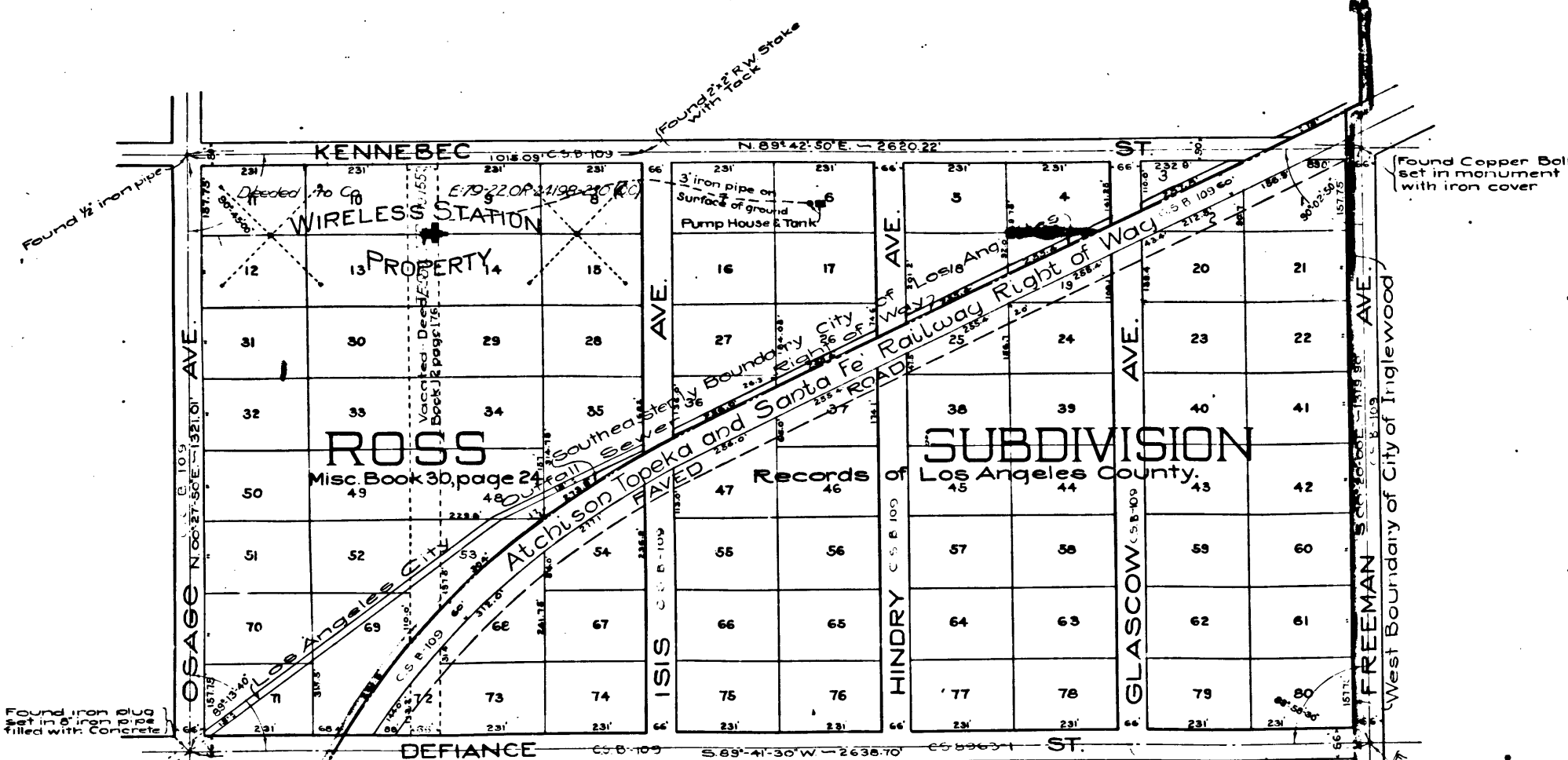
NOTES

All Bearings Refer to true Meridian as determined by direct solar observation. The Datum Plane is mean lower low water. On Marginal Map the lot dimensions, Street widths and Railway Right of Way are from the recorded Map. Bearings, Distances and Angles on street center lines and corners and stakes found are from this Survey. Street names, Sewer Right of Way and Paved Road are copied from Los Angeles City and other Maps. Lot dimensions were prorated to make up all differences in actual and recorded lengths.



PLAN OF TOWERS

East Tower has 53 Panels
West Tower has 51 Panels
Guy cables to top of the 18th, 26th, 37th, 46th and Top Panels of the Towers.



MARGINAL MAP

Scale: 1" = 200'
See Notes above

MAP
Showing Location of
INGLEWOOD
WIRELESS STATION

situated in
the City of Los Angeles, County of Los Angeles,
State of California, in Lots 8 to 15 inclusive and
a portion of vacated Street, of the Rose Sub-
division recorded in Book 30, page 24 Misc-
ellaneous Records of Los Angeles County.
Latitude 33° 57' 40" Longitude 118° 22' 40"

Alfred Jones, Acting County Surveyor August 1918
Scale 1" = 40'

CS 8162

NEG. No 95
I.M. 24