

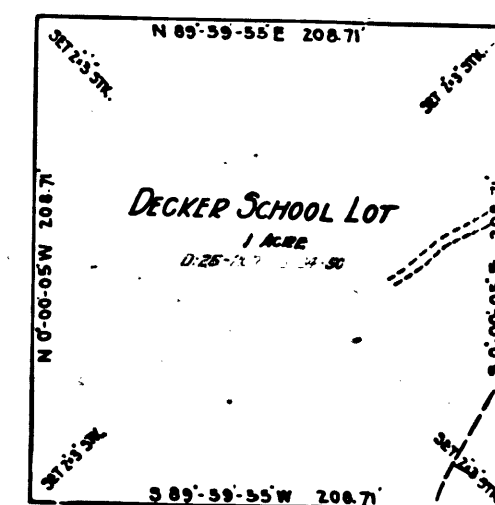
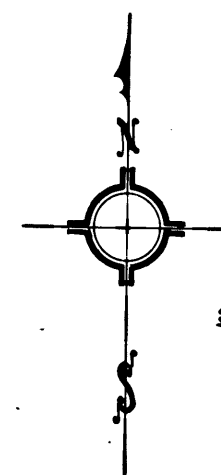
MAP
SHOWING SURVEY OF
DECKER SCHOOL LOT
LOCATED IN
SECTION 20 TWP 15 R 19 W SBM
DECKER SCHOOL AND
ROAD CONNECTING WITH DECKER ROAD

COUNTY SURVEYORS MAP No 8170
ALFRED JONES ACTING COUNTY SURVEYOR
SURVEYED NOV 25 1918

Surveyed under instructions of the Board of Supervisors, per order date: November 19 1918
Bearings based on bearing of Decker Road as shown on County Surveyor's Map No 8093

Field Work by Conly
Office Work by Dean
Checked by Conly
F.S. 53-118 & 121

FOR RELOCATION OF DECKER SCHOOL ROAD
AND DECKER SCHOOL LOT SEE C.S. B-484



SCALE 1 IN. = 50 FT.

CS 8170

