

KERN CO.

T 9 N
T 8 N

LOS ANGELES CO.

10	11	12	6	5	4
15	14	13	7	8	9
22	23	24	18	17	16
27	26	25	19	20	21
34	35	36	30	29	28
34	35	36	31	32	33
T 8 N T 7 N					
3	2	1	6	5	4
10	11	12	7	8	9
15	14	13	18	17	16
22	23	24	19	20	21
27	26	25	30	29	28
34	35	36	31	32	33
T 7 N T 6 N					
3	2	1	6	5	4
10	11	12	7	8	9
15	14	13	18	17	16
22	23	24	19	20	21
27	26	25	30	29	28
34	35	36	31	32	33

3	2	1	6	5	4
10	11	12	7	8	9
15	14	13	18	17	16
22	23	24	19	20	21
27	26	25	30	29	28
34	35	36	31	32	33
T 6 N T 5 N					
3	2	1	6	5	4
10	11	12	7	8	9
15	14	13	18	17	16
22	23	24	19	20	21
27	26	25	30	29	28
34	35	36	31	32	33
T 5 N T 4 N					
3	2	1	6	5	4
10	11	12	7	8	9
15	14	13	18	17	16
22	23	24	19	20	21
27	26	25	30	29	28
34	35	36	31	32	33

3	2	1	6	5	4
10	11	12	7	8	9
15	14	13	18	17	16

ge in County Boundary - the effective July 22nd 1919

R D I N O C O U N T Y

F L S C O U N T Y

CS	8188
A1	OF A2

U
R
A
Z
R
W
O

Z
A
O

7	8	9	10	11	12	13	14	15	16	17	18	19	20	21	22	23	24	25	26	27	28	29	30	31	32	33	34	35	36	37	38	39	40	41	42	43	44	45	46	47	48	49	50						
1	2	3	4	5	6	7	8	9	10	11	12	13	14	15	16	17	18	19	20	21	22	23	24	25	26	27	28	29	30	31	32	33	34	35	36	37	38	39	40	41	42	43	44	45	46	47	48	49	50

L
W
O
Z
A

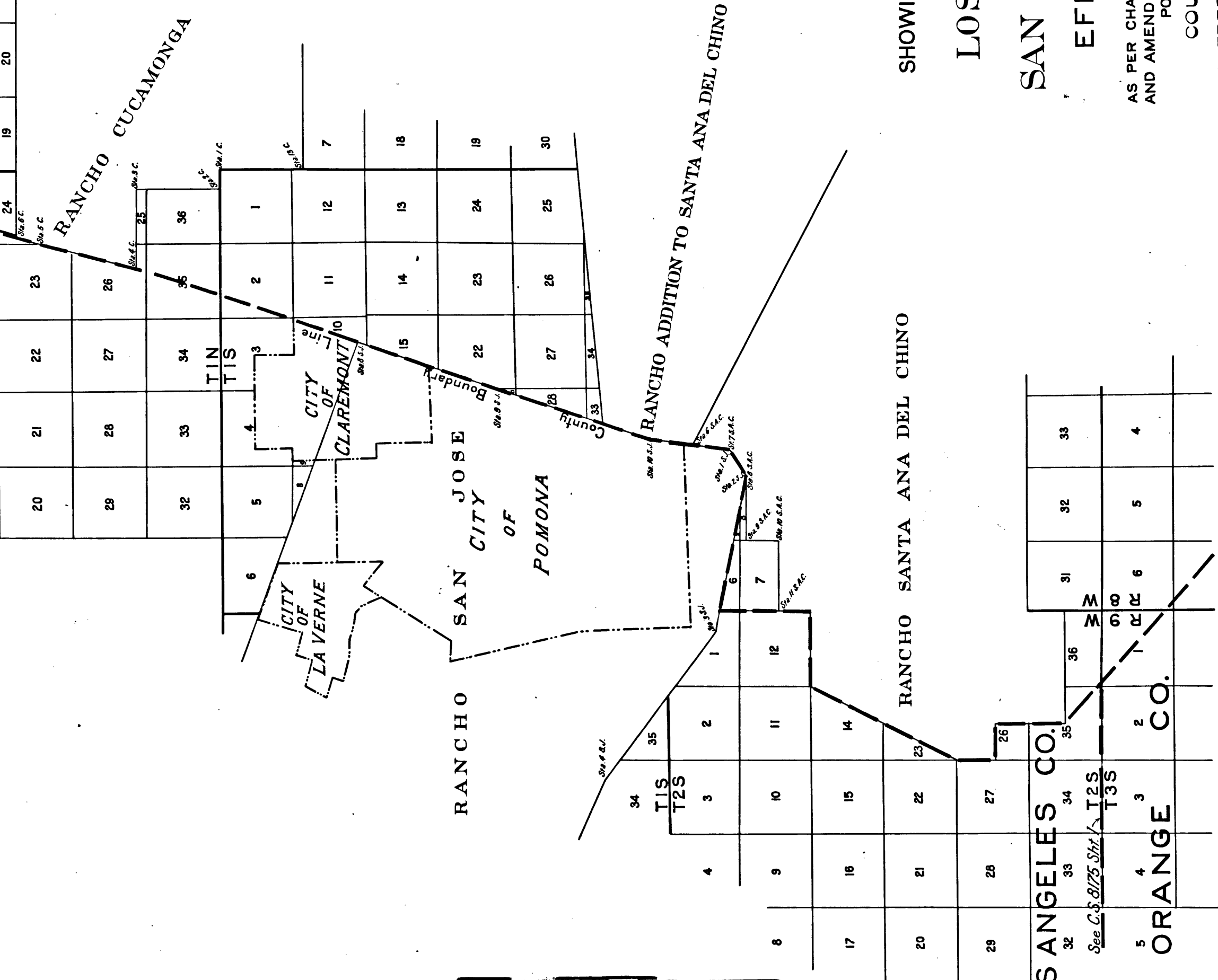
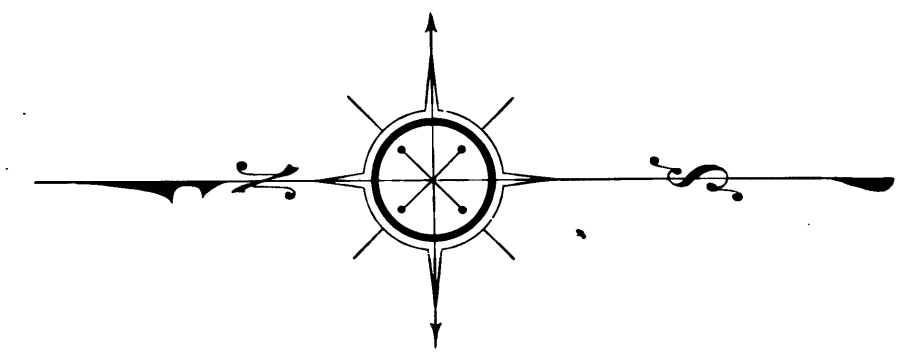
O
O
L

CS 8188
A 2 OF A 2

Township Corner is an angle point in County Boundary Line as established in 1919

T2N
T3N
T2N

M
O
N
T
C
O
R
N



MAP
SHOWING CHANGE IN BOUNDARY LINE
BETWEEN
LOS ANGELES COUNTY
AND
SAN BERNARDINO COUNTY
EFFECTIVE JULY 22ND 1919

AS PER CHAPTER 470, SECTION 20 OF THE 1919 STATUTES AND AMENDMENTS TO THE CODES, OR SECTION 3927 OF THE POLITICAL CODE AS ENACTED IN 1919
COUNTY SURVEYORS MAP NO: 8188
ALFRED JONES, ACTING COUNTY SURVEYOR

Scale 1 inch = 1 mile
Platted by: A.S.
Checked by: F.W.S.

*For Official County Boundary Description see F.D. 9122
Note: The action of the State Legislature (per Chapter 470 of the 1919 Statutes and Amendments) changing the location of the boundary line between Los Angeles and San Bernardino Counties, as established by the Board of Supervisors of Los Angeles County, California, in 1919, is hereby approved by the State Board of Supervisors, State of California, on February 19th 1920, 182 Cal. Decisions, No. 2899.*

LOS ANGELES CO.

32	33	34	35	36	37	38	39	40	41	42	43	44	45	46	47	48	49	50																															
1	2	3	4	5	6	7	8	9	10	11	12	13	14	15	16	17	18	19	20	21	22	23	24	25	26	27	28	29	30	31	32	33	34	35	36	37	38	39	40	41	42	43	44	45	46	47	48	49	50

ORANGE CO.