

MAP
 OF A PORTION OF THE NORTHERLY
 BOUNDARY LINE OF THE PROPOSED
CITY OF MONTEBELLO

County Surveyors Map No. 8233.

J. E. ROCKHOLD COUNTY SURVEYOR

SURVEYED AUG 1920

SCALE 1"=200'

Surveyed under instructions of the Board of Supervisors per order dated July 23, 1920.
 Bearings based on solar observation.

F. B. 62-64 to 68

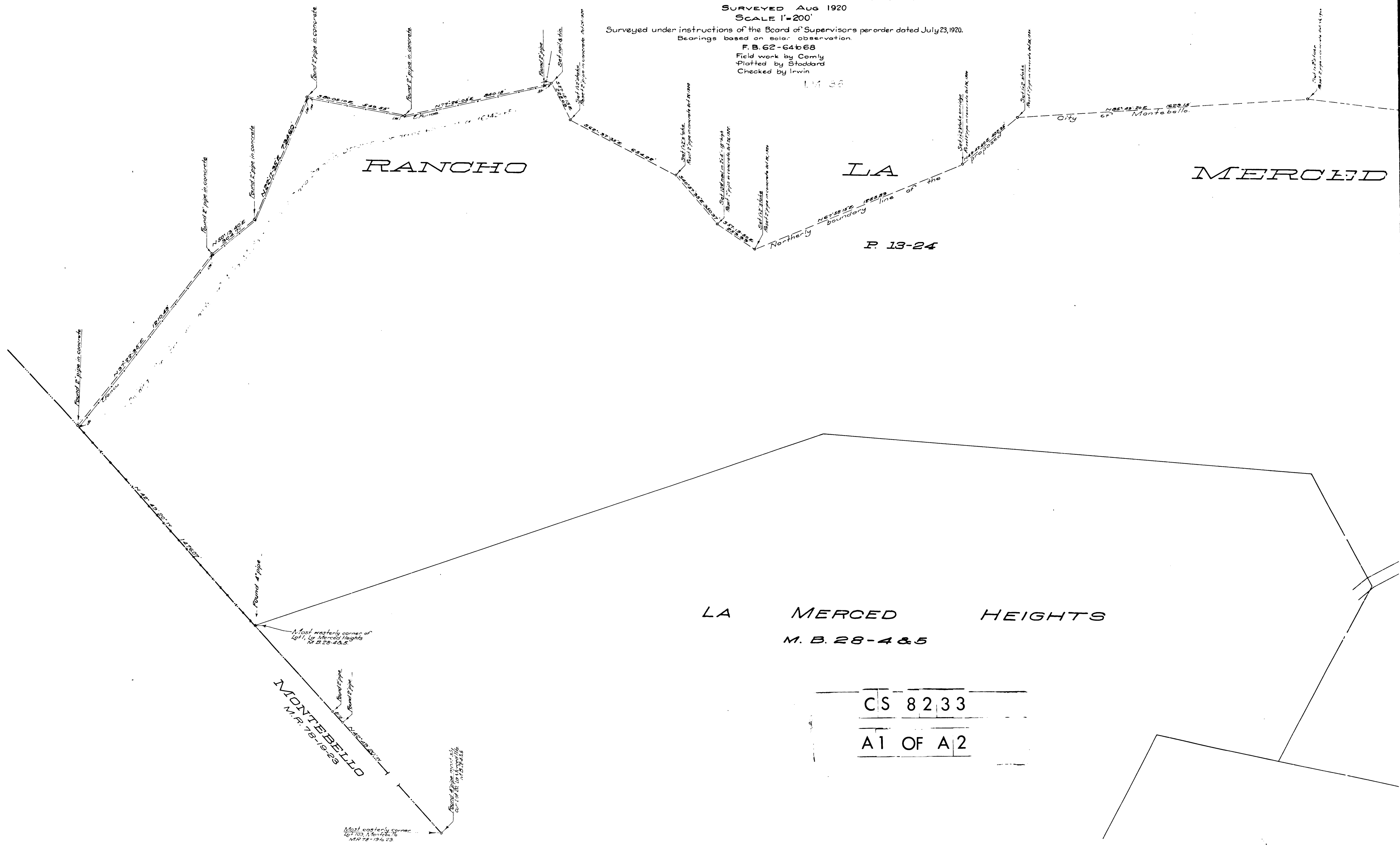
Field work by Comly

Plotted by Stoddard

Checked by Irwin

L.M. 58

P. 13-24



LA MERCEID HEIGHTS
 M. B. 28-4 & 5

CS	8233
A1	OF A2

MONTEBELLO
 N.P. 75-19-23

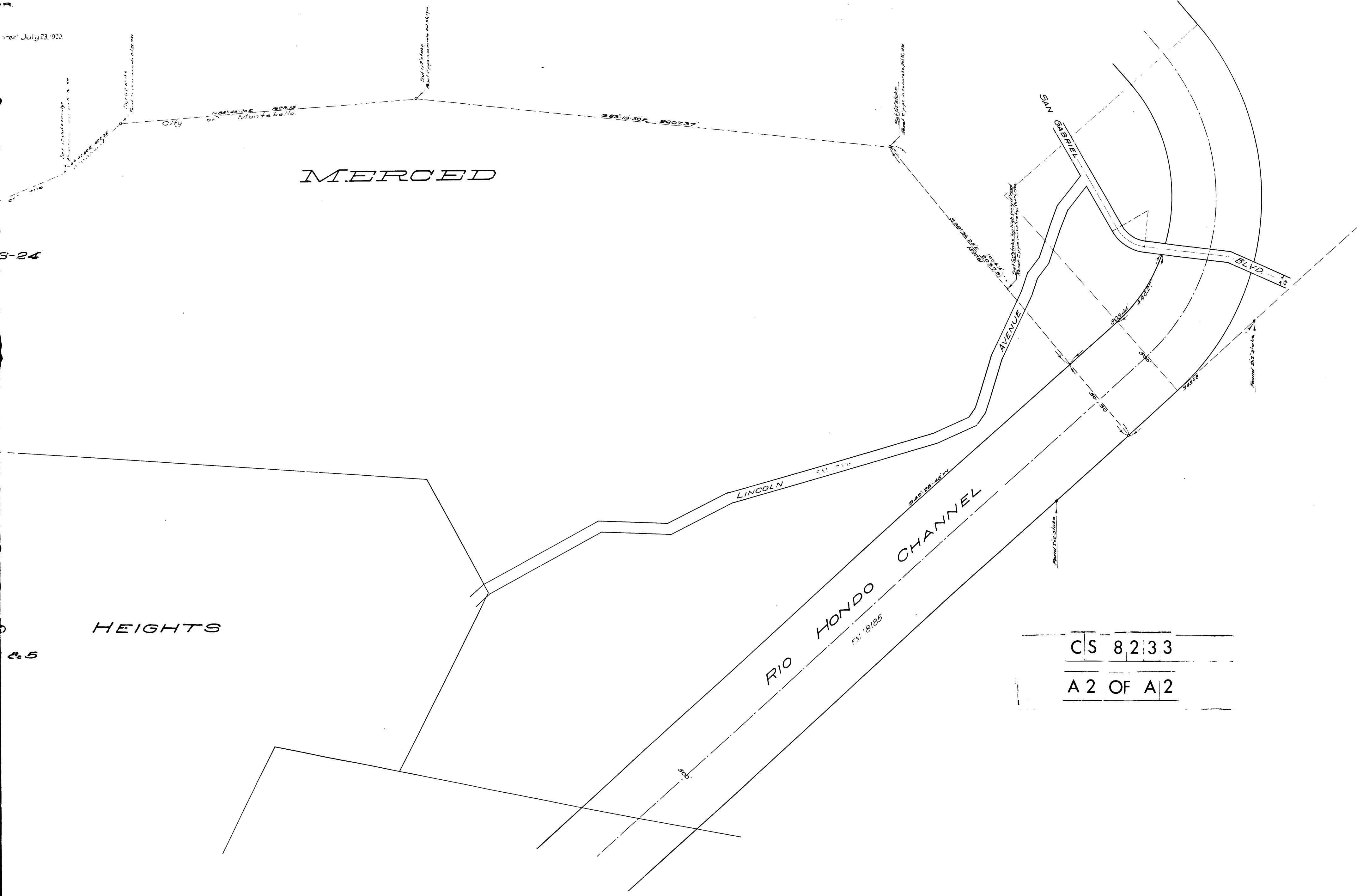
Most westerly corner of
 1911 1/2 Merced Heights
 M. B. 28-4 & 5

Most easterly corner
 1911 1/2 Merced Heights
 M. B. 28-4 & 5

Spec July 23, 1920

8-24

2.5



MERCED

HEIGHTS

LINCOLN

SAN GABRIEL

BLVD

AVENUE

RIO HONDO CHANNEL

CS 82.33

A 2 OF A 2