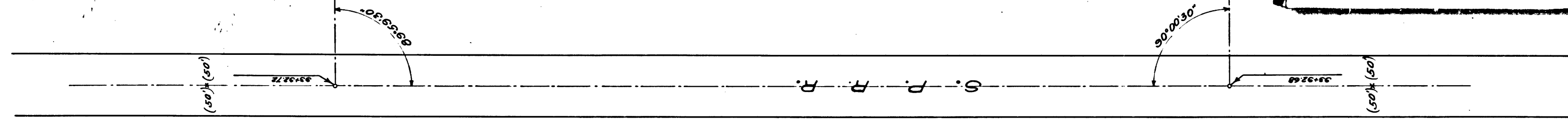
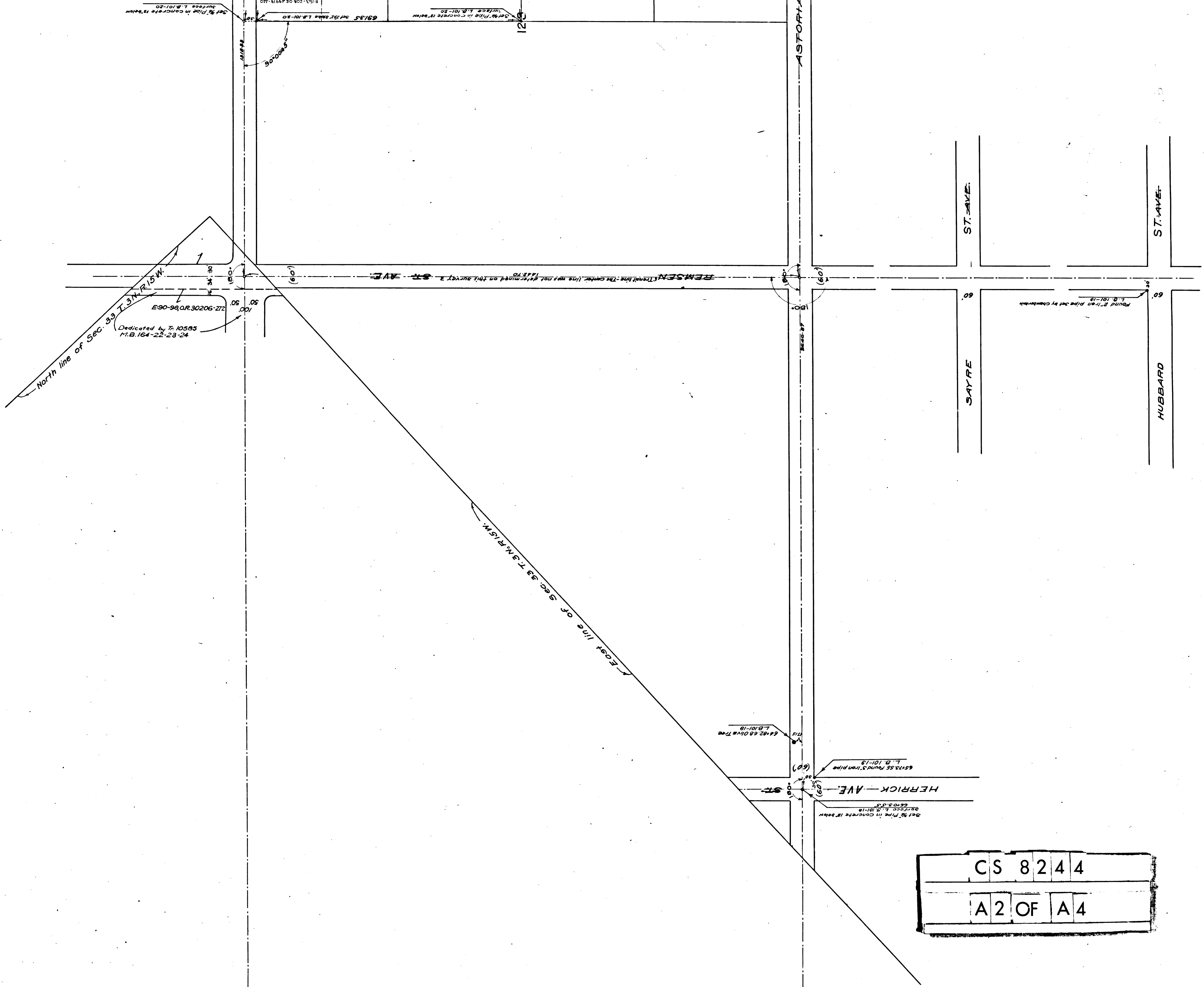


SEC. 33 T. 3 N., R. 15 W.
NORTHERN PORTION OF Ex MISSION DE SAN FERNANDO
R. F. 238

CS	8	2	4	4
A	1	OF	A	4





CS	8	2	4	4
A	2	OF	A	4

MAP
SHOWING SURVEY OF
EL RETIRO PROPERTY

BEING
LOTS 1 AND 2, BLOCK 123, LOS ANGELES OLIVE GROWERS ASSOCIATION LANDS
RECORDED IN BOOK 53 PAGE 27, MISCELLANEOUS RECORDS OF
LOS ANGELES COUNTY

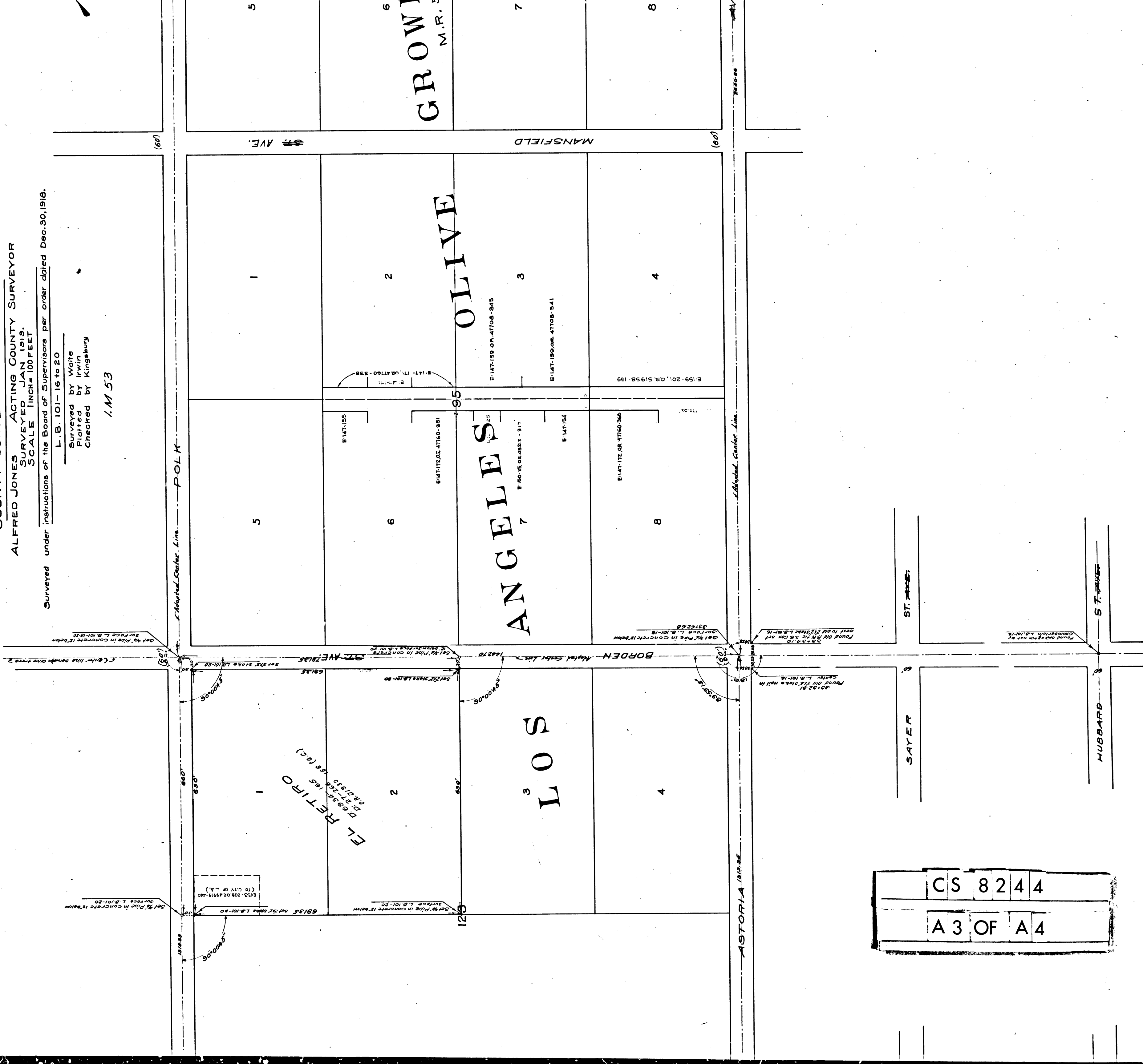
COUNTY SURVEYORS MAP N^o 8244

ALFRED JONES ACTING COUNTY SURVEYOR
SURVEYED JAN 1919.
SCALE 1 INCH = 100 FEET

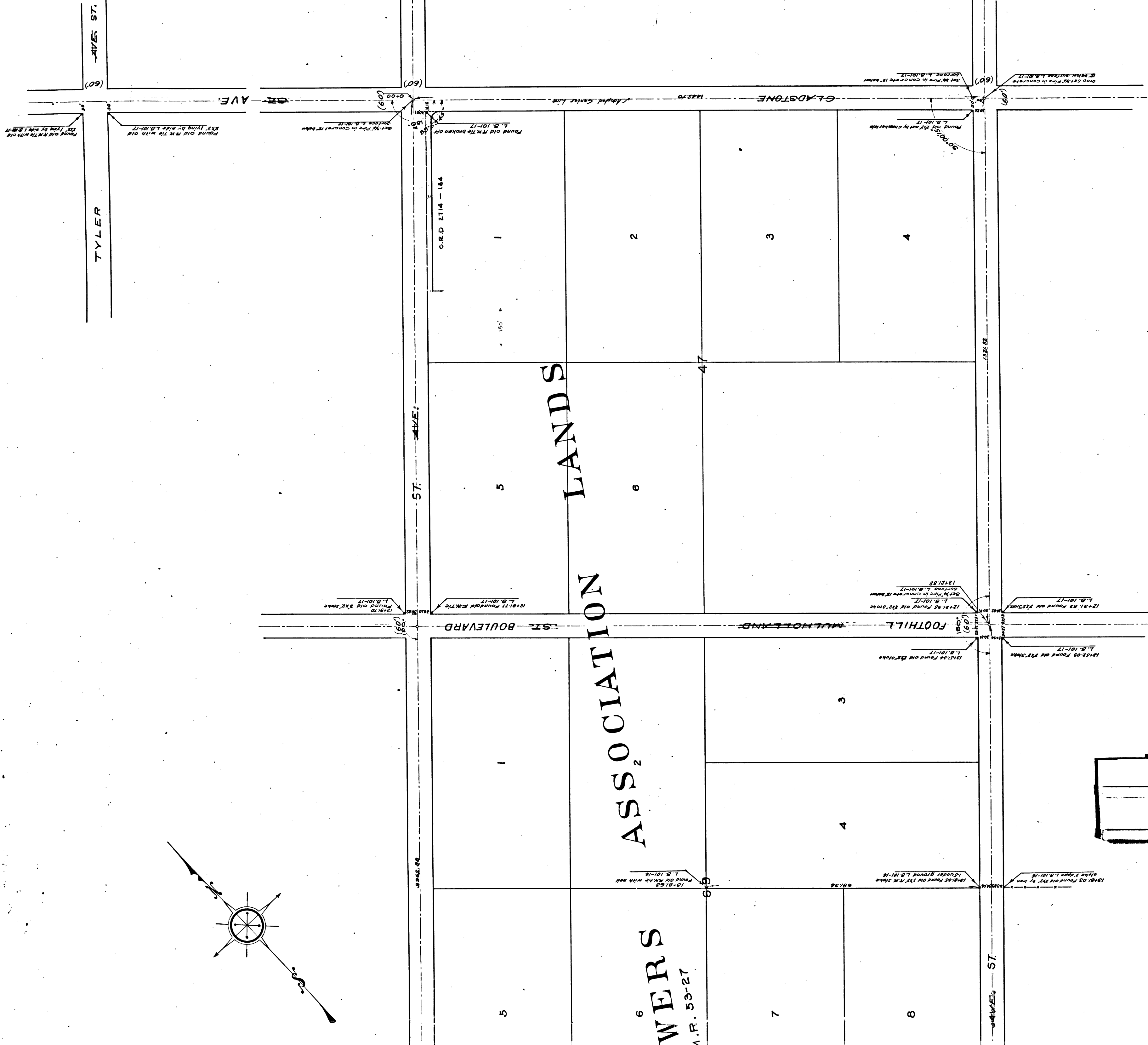
Surveyed under instructions of the Board of Supervisors per order dated Dec. 30, 1918.

L. B. 101-16 to 20
Surveyed by Waite
Platted by Irwin
Checked by Kingsbury

J. M. 53



CS 8244
A3 OF A4



CS	8	2	4	4
A	4	OF	A	4

WERS
A.R. 53-27