

SEPULVEDA BLVD MAP OF WALNUT DRIVE

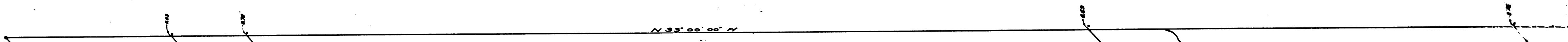
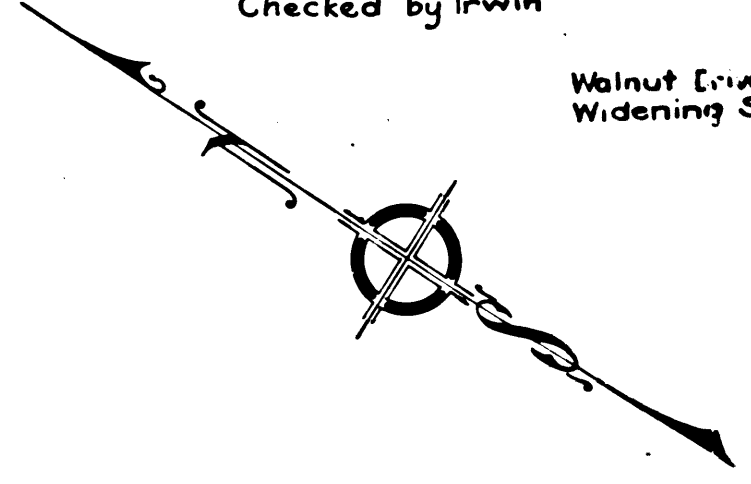
FROM CHARNOCK ROAD NORTHERLY TO THE
WESTERLY CORNER OF LOT 19 OF THE
PARTITION OF THE ESTATE OF PEDRO
TALAMANTES PER SUPERIOR COURT CASE
NO. 7078.

County Surveyor's Map No. 8246

J. E. ROCKHOLD COUNTY SURVEYOR
SURVEYED Nov. 1920.
SCALE 1"=200'

Surveyed under instructions of the Board of Supervisors per order of
Bearings based on that of the southwesterly line per C.F. 113
F. B. 61-111 to 113
Field work by Waite
Office work by Stoddard
Checked by Irwin

Walnut Drive changed to
Widening Sepulveda Blvd.



Dist. Extended along with 2"
N.W. Cor. Pedro Talamantes Estate
(P. 28, 61-113)

Dist. to Point P. along N.W. Cor.
Smith Farm (P. 28, 61-113)

Dist. to Point P. along N.W. Cor.
Smith Farm (P. 28, 61-113)

Dist. to Point P. along N.W. Cor.
Smith Farm (P. 28, 61-113)

Dist. to Point P. along N.W. Cor.
Smith Farm (P. 28, 61-113)

CS	8	2	4	6
A1	OF	A2		

This line established by running from stone at N.W. Cor. of Pedro

15
10
60

SEPUVEDA BLVD. MAP OF WALNUT DRIVE

WALNUT DRIVE NORTHWESTERLY TO THE
CORNER OF LOT 19 OF THE
THE ESTATE OF PEDRO
PER SUPERIOR COURT CASE
NO. 7078.

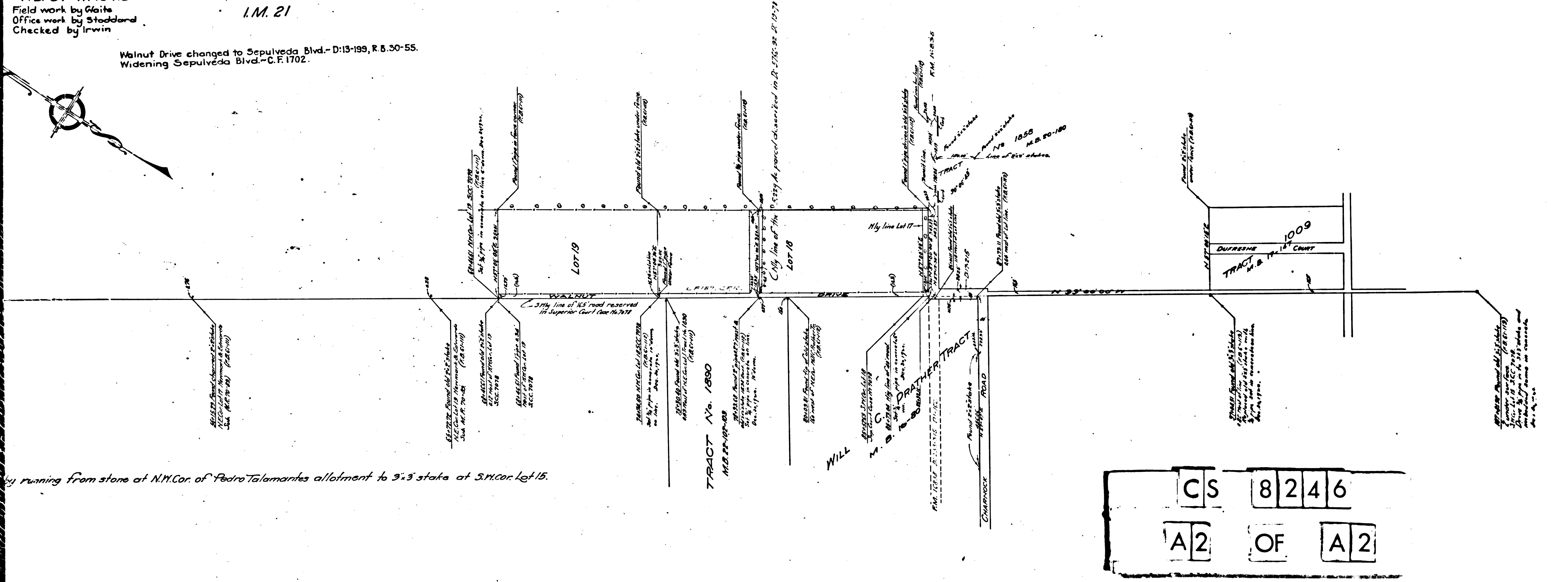
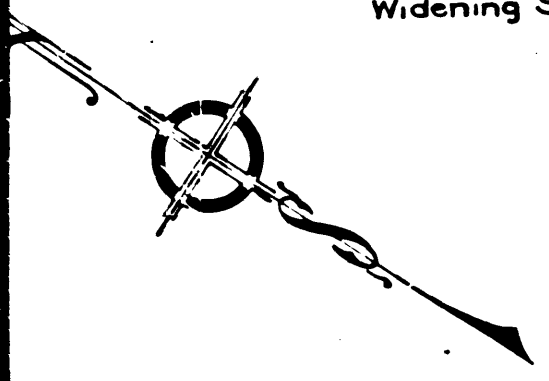
Surveyor's Map No. 8246

COUNTY SURVEYOR
SURVEYED Nov. 1920.
SCALE 1"=200'

Order of the Board of Supervisors per order dated Oct. 29, 1920.
That of the southwesterly line per C.F. 187.
F.B. 61-111 to 113
Field work by Gaite
Office work by Stoddard
Checked by Irwin

I.M. 21

Walnut Drive changed to Sepulveda Blvd.-D:13-199, R.B. 30-55.
Widening Sepulveda Blvd.-C.F. 1702.



by running from stone at N.M. Cor. of Pedro Talamantes allotment to 3x3 state at S.M. Cor. Lot 15.

CS 8246
A2 OF A2