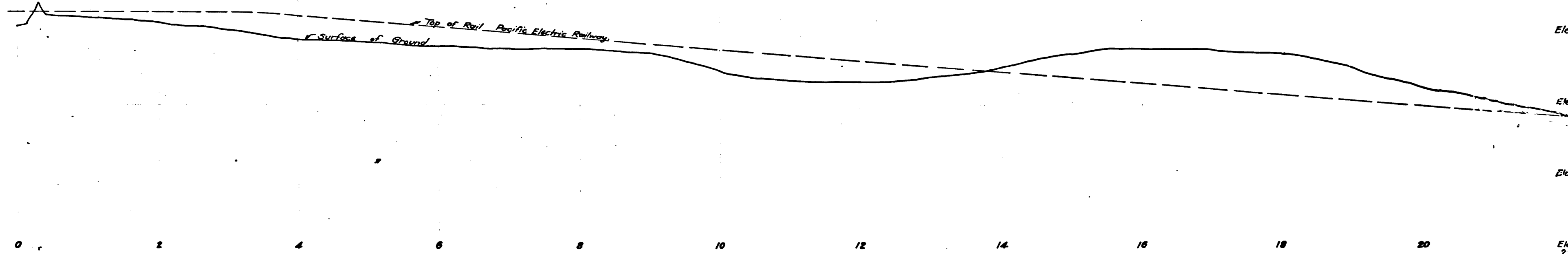


Elev 60
Elev 50
Elev 40
Elev 30
Elev 20

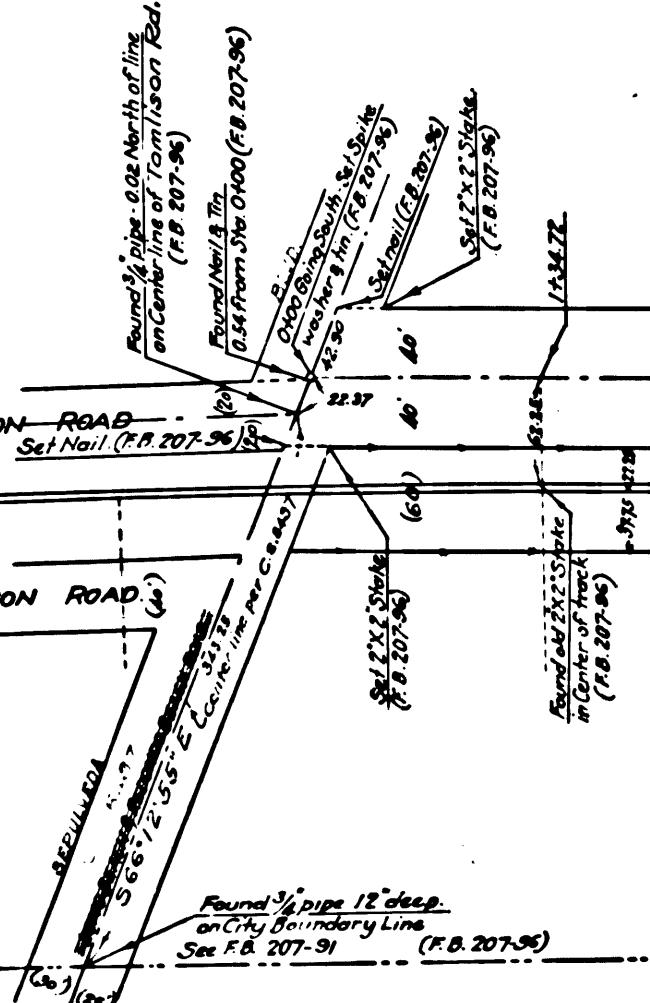


TRACT NO 3020
M.B. 31-13

TOMLINSON ROAD
Set Nail (F.B. 207-96)

TRACT NO 3021
M.B. 31-34

TOMLINSON ROAD
Set Nail (F.B. 207-96)



NORMANDIE AVENUE

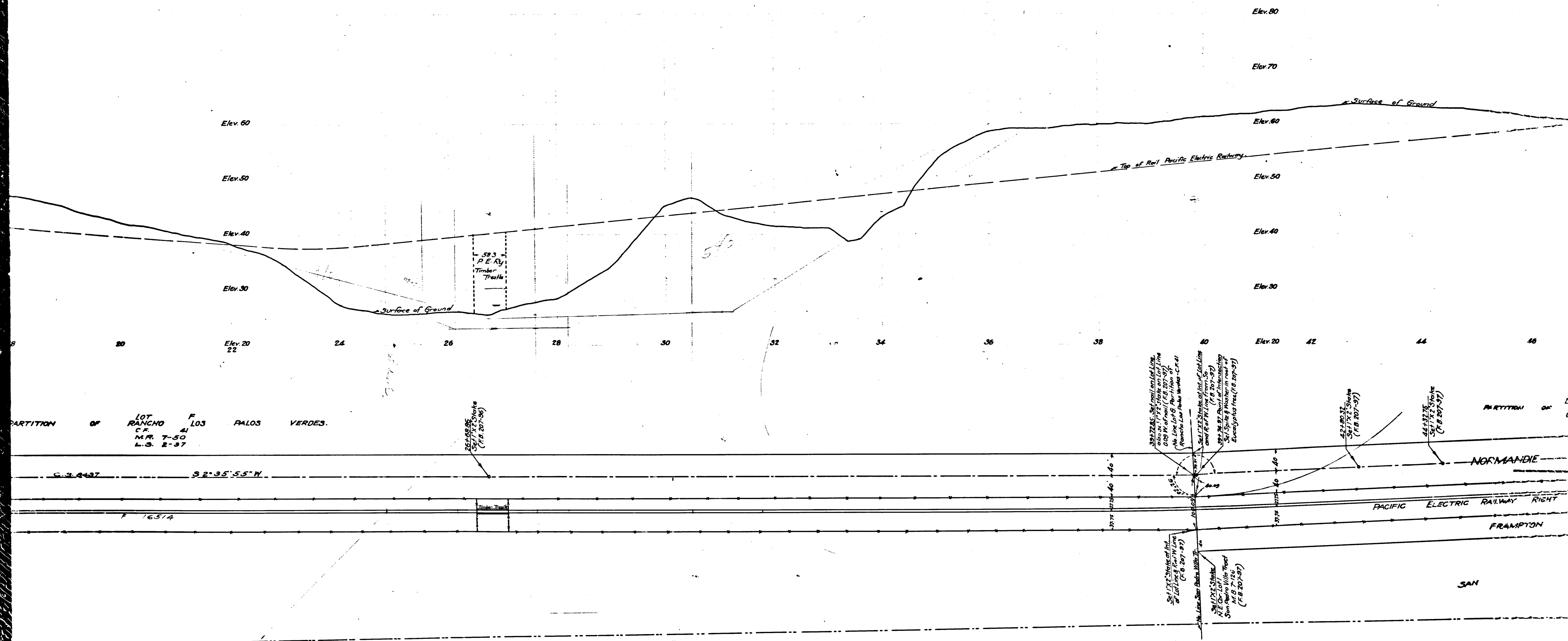
PACIFIC ELECTRIC RAILWAY RIGHT OF WAY

City of Los Angeles

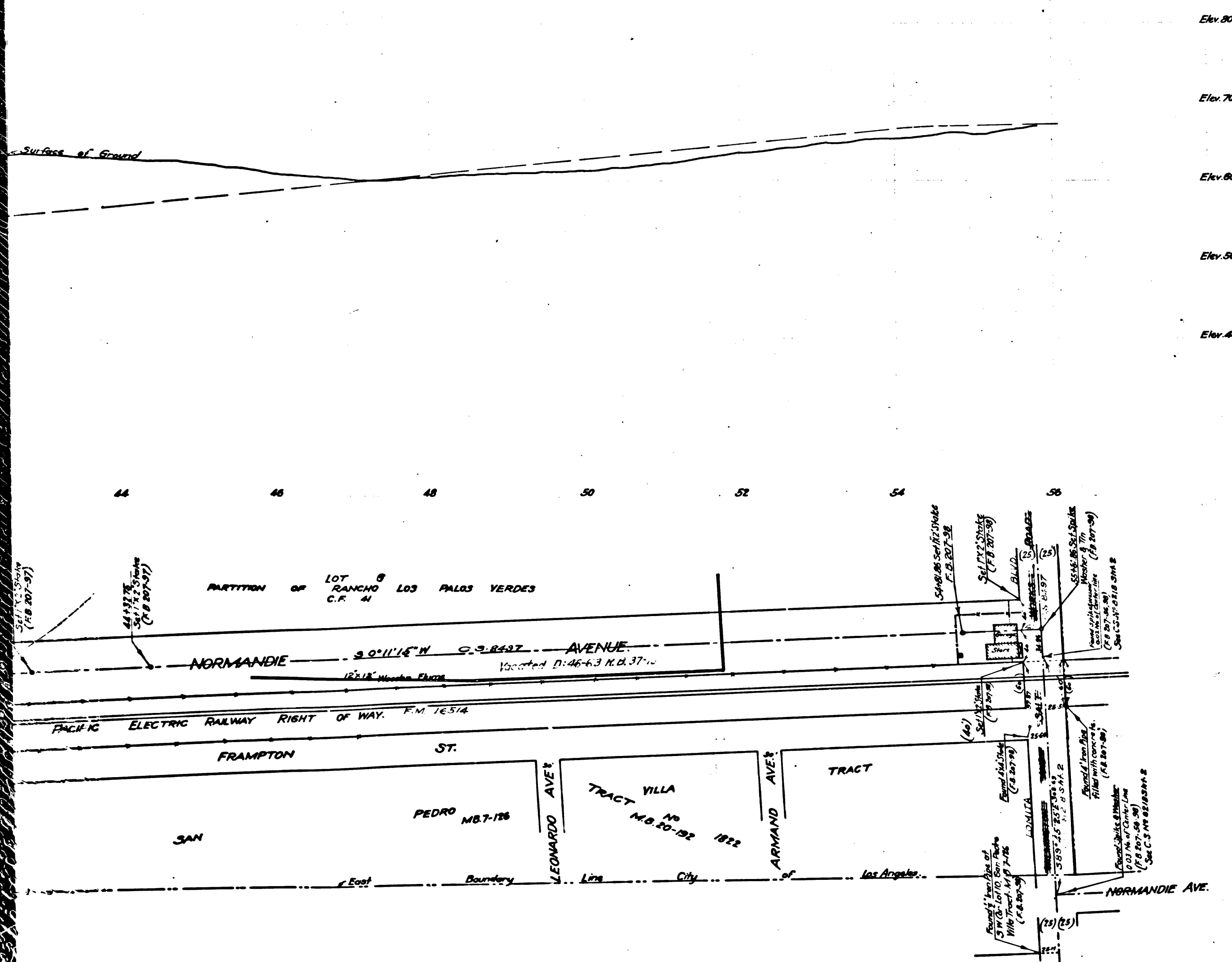
1740277
Set Nail (F.B. 207-96)

PARTITION OF LOT RANCHO F LOS ANGELES C.F. 41 M.P. 7-50 L.S. 2-37

CS	8	2	6	6
A1	OF	A3		



CS 8266
 A2 OF A3

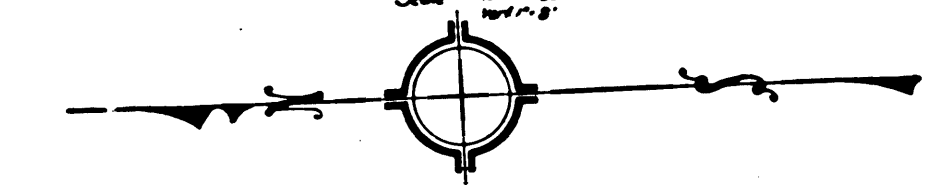


Elev. 80
 Elev. 70
 Elev. 60
 Elev. 50
 Elev. 40

MAP OF
NORMANDIE AVENUE
 SEPULVEDA FROM BLVD.
 LONG BEACH AND REDONDO BEACH ROAD
 LOMITA TO BLVD.
 WILMINGTON AND SALT WORKS ROAD

SHOWING ALIGNMENT, PROFILE AND GRADES.
 J.E. ROCKHOLD, COUNTY SURVEYOR.
 SURVEYED JULY 1920.

FB. 207-5670-58 L.B. 209-108701M
 Field Work by Comly
 Office Work by Warren
 Checked by Irwin
 Scale 1" = 40'



I.M. 28

CS	8	2	6	6
A3	OF	A3		