

CS 68289
A1 OF A2

D. R. 181300
D. R. 181301
D. R. 181302
D. R. 181303
D. R. 181304
D. R. 181305
D. R. 181306
D. R. 181307
D. R. 181308
D. R. 181309
D. R. 181310

D. R. 181311
D. R. 181312
D. R. 181313
D. R. 181314
D. R. 181315
D. R. 181316
D. R. 181317
D. R. 181318
D. R. 181319
D. R. 181320

TOWN 14W

RANGE 23S

Found iron pipe in old mound
Set by T&E
See P.M. 181300

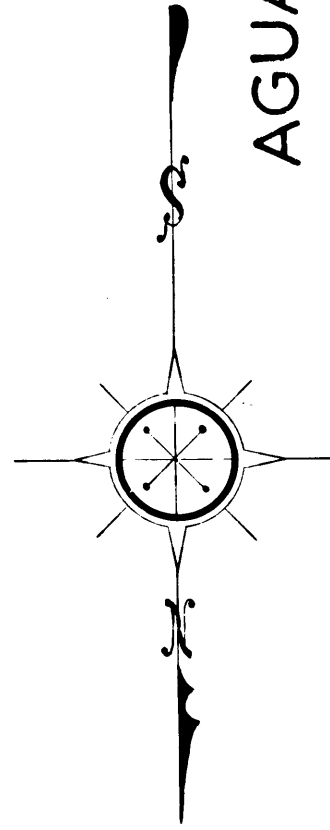
Found iron pipe in concrete
Set by T&E
See P.M. 181300

Found iron pipe in concrete
Set by T&E
See P.M. 181300

Found iron pipe in concrete
Set by T&E
See P.M. 181300

Found iron pipe in concrete
Set by T&E
See P.M. 181300

P. 15-214
Truman A. Darlin
Academy of Surveying
D. R. 181300



AGUA DULCE CYN. RD.
MAP OF

MORGAN ROAD

FROM
MINT CANYON ROAD
TO

EAST QUARTER CORNER OF SECTION 27 T. 5 N., R. 14 W.

COUNTY SURVEYORS MAP NO 8289

J.E. Rockhold County Surveyor

Surveyed July 1921

Scales: Longitudinal - 1 in. = 400 ft.
Lateral - 1 in. = 200 ft.

Surveyed under the instructions of the Board of Supervisors per order dated May 11 - 1921.

Bearings based on center line of Mint Canyon Road as shown on FM18046 Sht. 5.

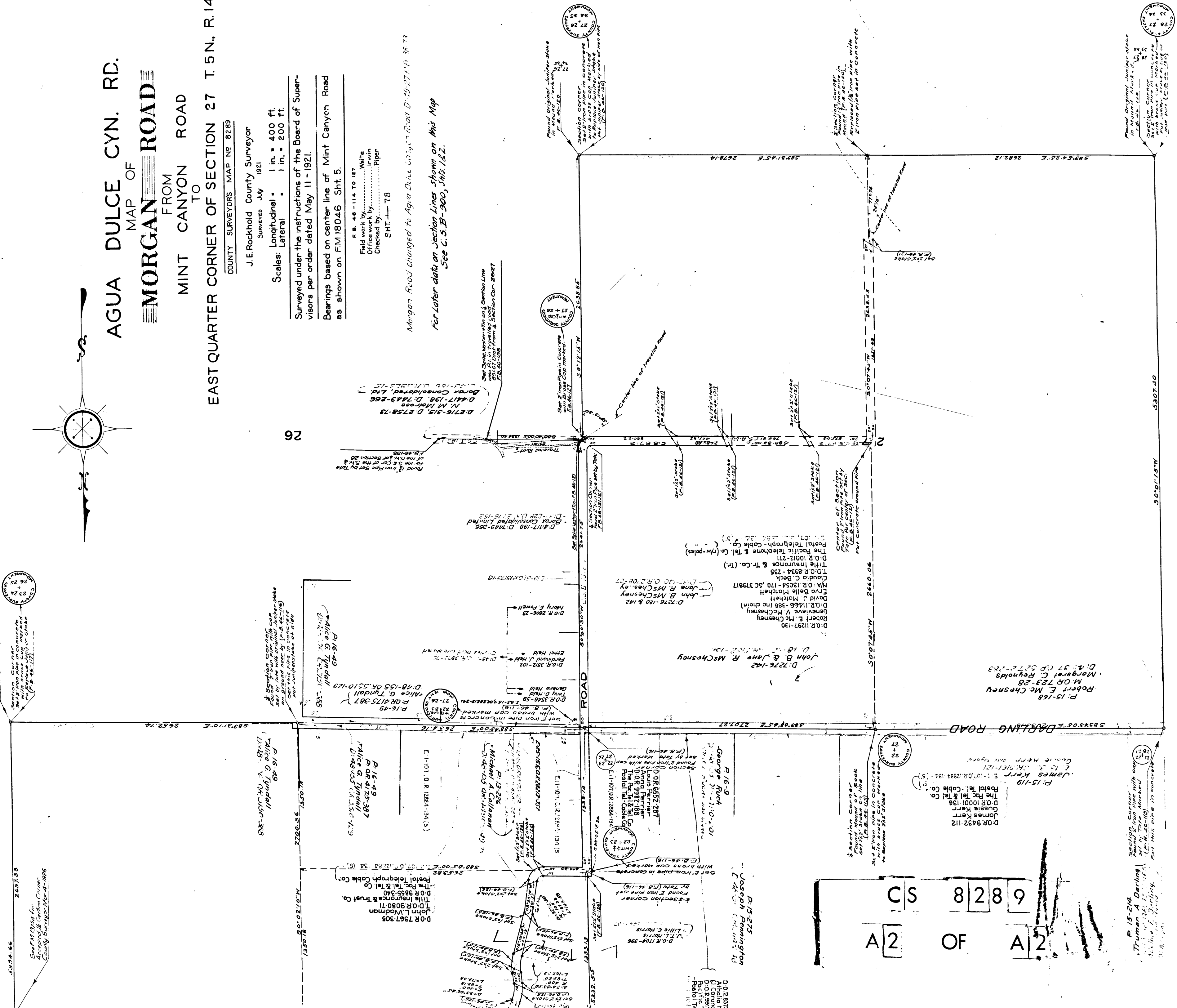
F. B. 48 - 114 TO 127
Field work by White
Office work by Irwin
Checked by Piper
SMT - 78

Morgan Road changed to Agua Dulce Canyon Road D-49 27 P. 6 38 73

For Later data on Section Lines shown on this Map See C. S. B-900, Shts. 1 & 2.

Found original corner stake with 2" iron pipe in concrete set by J. E. Rockhold July 1921. (F. B. 48-114) (S. 27-12-15) (T. 5 N., R. 14 W.)

See F.M. 10744 for Approved & Certified County Surveyor No. 2-1896



OF A 2 OF A 2 CS 8 2 8 6

Found original corner stake with 2" iron pipe in concrete set by J. E. Rockhold July 1921. (F. B. 48-114) (S. 27-12-15) (T. 5 N., R. 14 W.)

Found original corner stake with 2" iron pipe in concrete set by J. E. Rockhold July 1921. (F. B. 48-114) (S. 27-12-15) (T. 5 N., R. 14 W.)

Found original corner stake with 2" iron pipe in concrete set by J. E. Rockhold July 1921. (F. B. 48-114) (S. 27-12-15) (T. 5 N., R. 14 W.)

Found original corner stake with 2" iron pipe in concrete set by J. E. Rockhold July 1921. (F. B. 48-114) (S. 27-12-15) (T. 5 N., R. 14 W.)