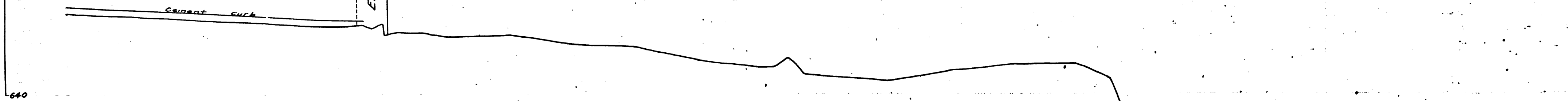
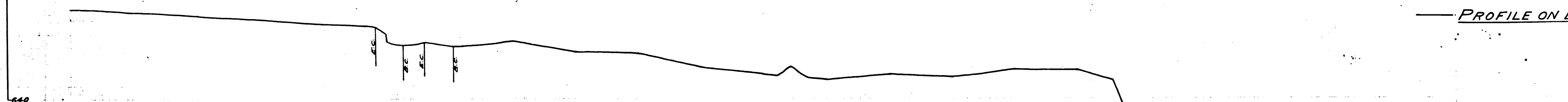


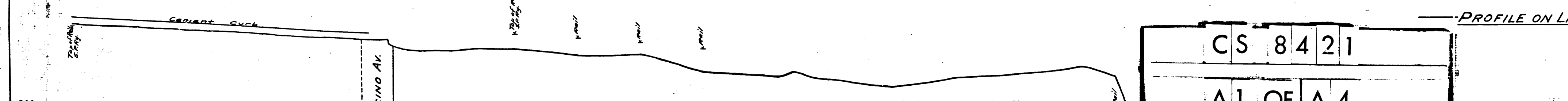
92 90 88 86 84 82 80 78 76 74 72 70



650 640



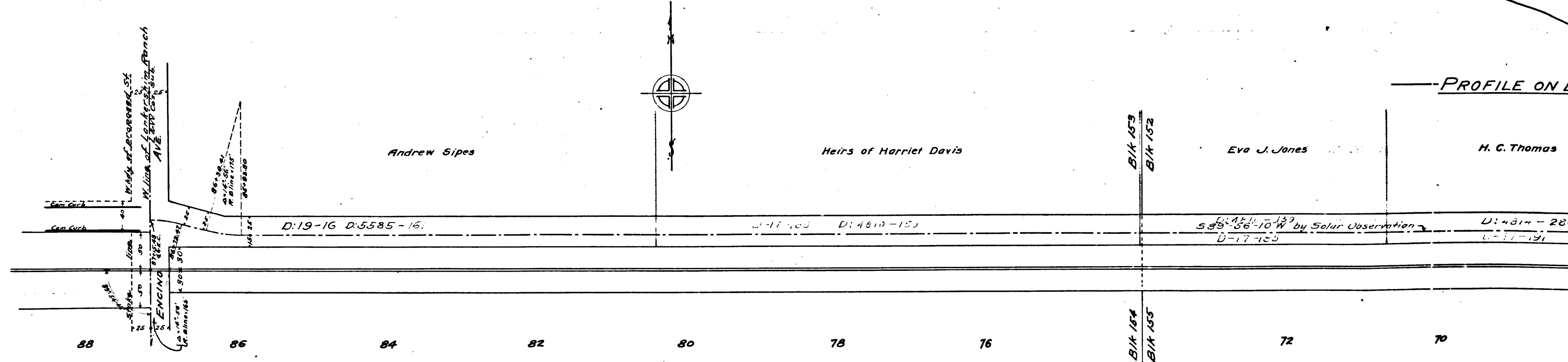
650 640



CS 8421
A1 OF A 4

92 90 88 86 84 82 80 78 76 74 72 70

D.M. 4232-124, 125



92 90 88 86 84 82 80 78 76 74 72 70

70 68 66 64 62 60 58 56 54 52 50 48 46 44

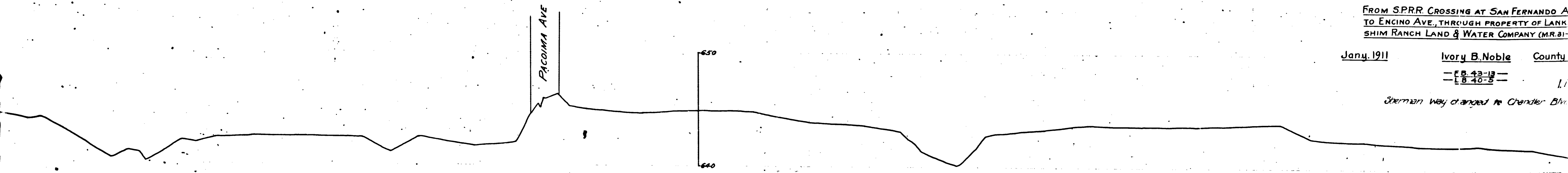
—PROFILE—
 OF
SHERMAN WAY

FROM S.P.R.R. CROSSING AT SAN FERNANDO AVE
 TO ENGINO AVE., THROUGH PROPERTY OF LANK
 SHIM RANCH LAND & WATER COMPANY (M.R. 81-)

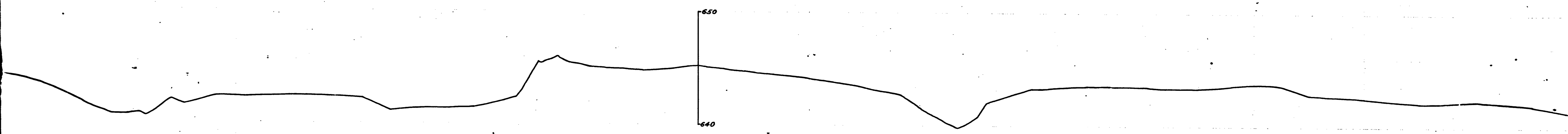
Jan'y. 1911 Ivory B. Noble County

—E.B. 43-13—
 —E.B. 40-5—

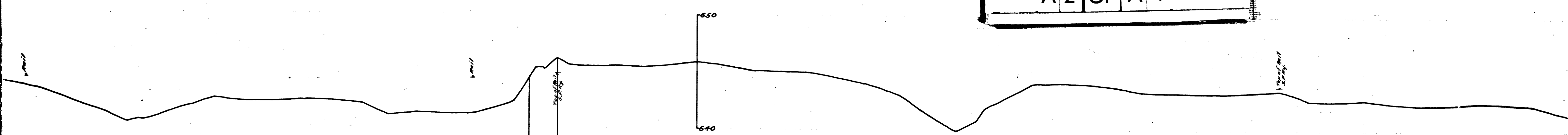
Sherman Way changed to Chandler Blvd.



—PROFILE ON LINE A—

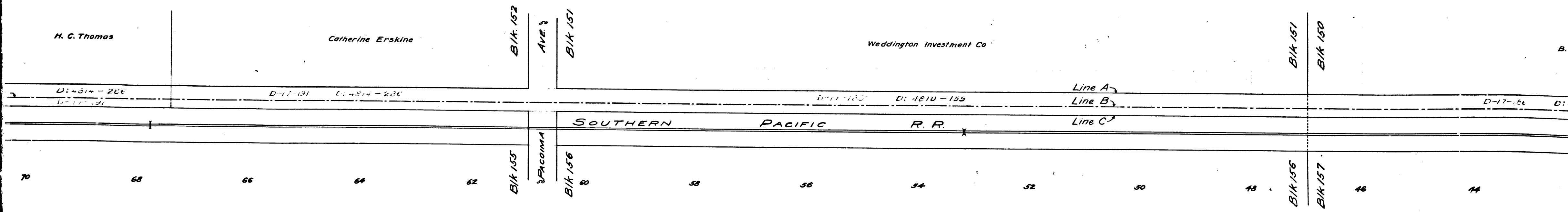


—PROFILE ON LINE B—



—PROFILE ON LINE C—

CS	8	4	2	1
A	2	OF	A	4

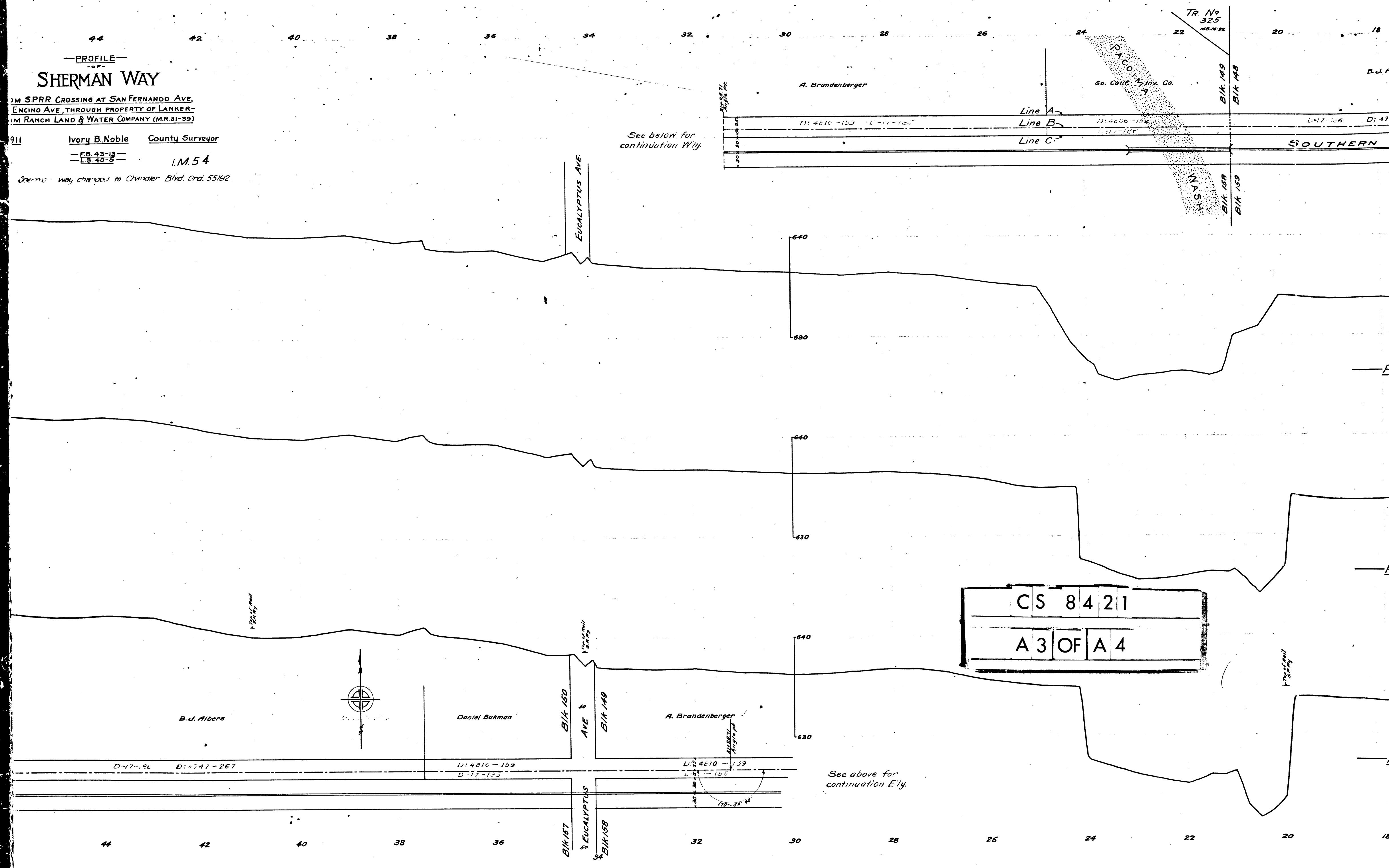


—PROFILE—
—OF—
SHERMAN WAY

3M S.P.R.R. CROSSING AT SAN FERNANDO AVE,
ENGINE AVE, THROUGH PROPERTY OF LANKER-
RANCH LAND & WATER COMPANY (M.R. 31-39)

911 Ivory B. Noble County Surveyor
—FB. 43-13—
—L.S. 40-8— I.M. 54

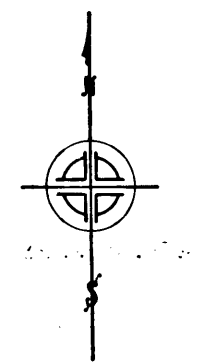
Sherman Way changes to Chandler Blvd. Ord. 55192



See below for continuation Wly.

See above for continuation Ely.

CS	8	4	2	1
A	3	OF	A	4



TR. No 325
M.B. N-22

DYCO
So. Calif. Inv. Co.

B/K 149
B/K 148

B/K 158
B/K 159

EUCALYPTUS AVE.

AVE &

B/K 149

B/K 157

EUCALYPTUS

B/K 158

B.J. Albers

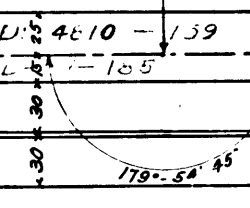
SOUTHERN

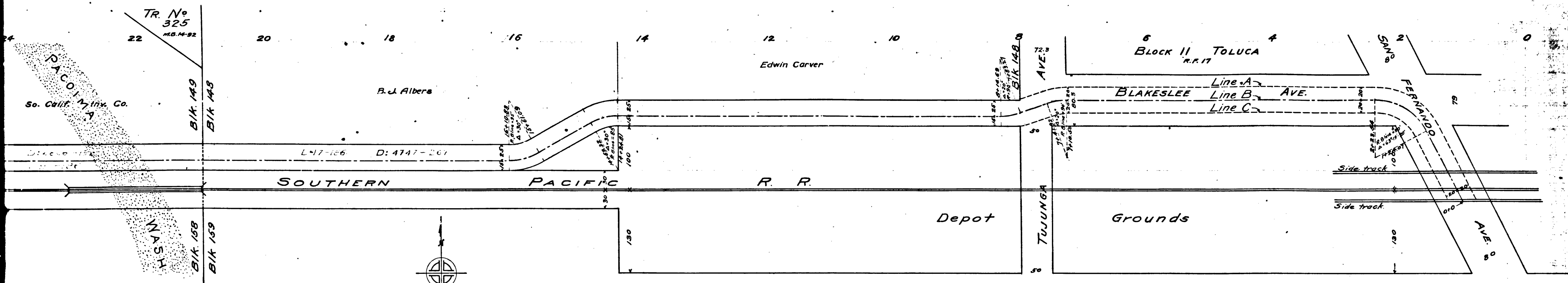
1/2 of parcel

1/2 of parcel

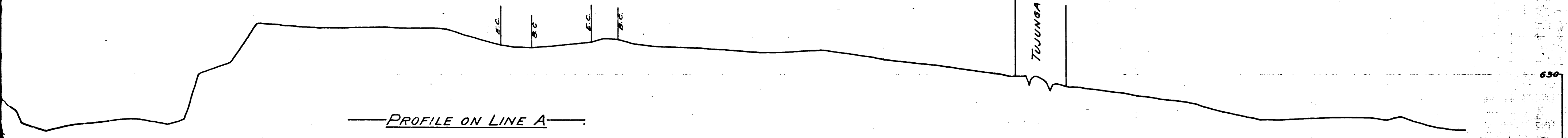
1/2 of parcel

1/2 of parcel

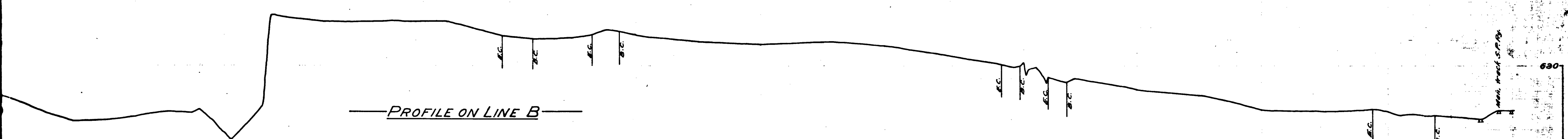




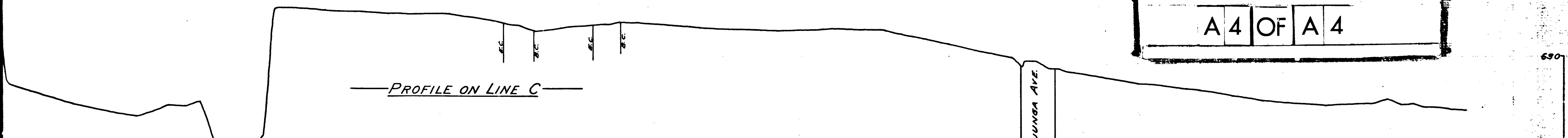
— PROFILE ON LINE A —



— PROFILE ON LINE B —



— PROFILE ON LINE C —



CS	8	4	2	1
A	4	OF	A	4