

MAP OF PALOMAR SCHOOL PROPERTY IN WATTS PARK TRACT COUNTY SURVEYORS MAP NO 8487

J. E. ROCKHOLD COUNTY SURVEYOR

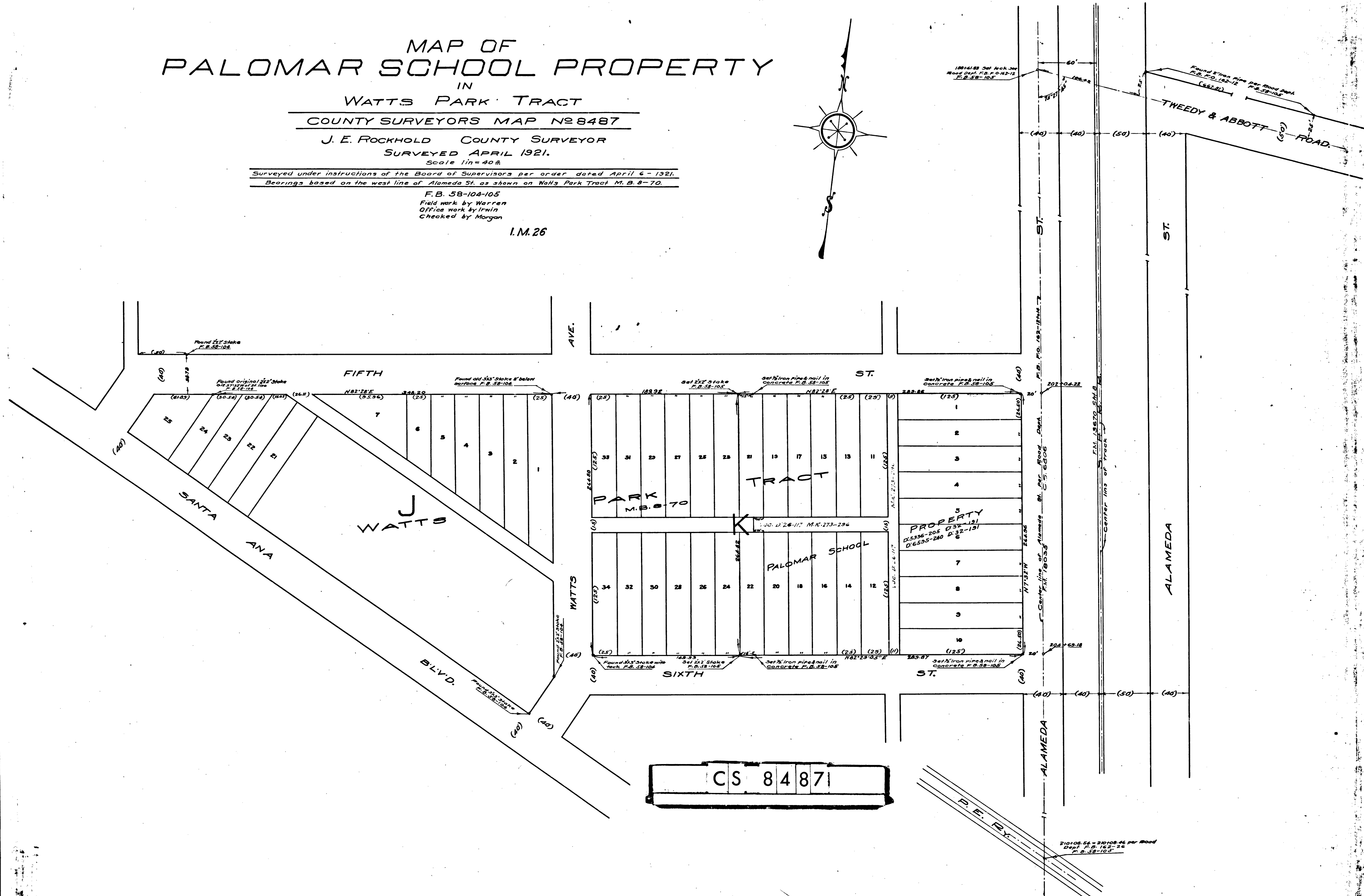
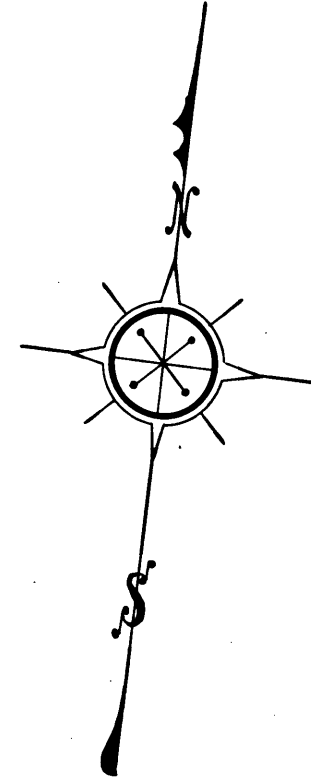
SURVEYED APRIL 1921.

Scale 1 in = 40 ft.

Surveyed under instructions of the Board of Supervisors per order dated April 6 - 1921.
Bearings based on the west line of Alameda St. as shown on Watts Park Tract M. B. 8-70.

F. B. 58-104-105
Field work by Warren
Office work by Irwin
Checked by Morgan

I. M. 26



CS 8487

P. E. RY.

210108.64 - 210108.64 per Road
Dept. F. B. 162-26
F. B. 58-105