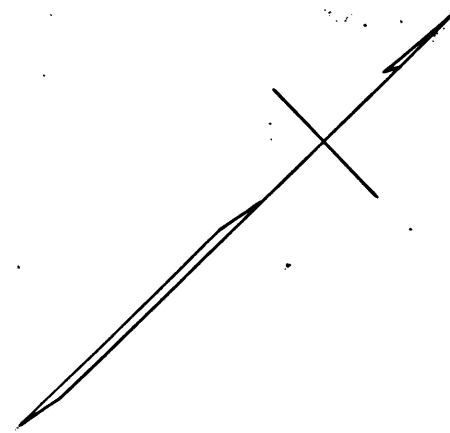


MAP  
SHOWING ELEVATIONS  
AT  
HALL OF JUSTICE SITE  
COUNTY SURVEYORS MAP NO 8494  
SHEET TWO OF SEVEN SHEETS  
J.E. ROCKHOLD COUNTY SURVEYOR.  
SURVEYED DEC. 1922.  
SCALE 1" = 20 FT.

F.B. 58-130 to 135  
FIELD WORK BY MANKEY  
OFFICE WORK BY IRWIN  
CHECKED BY SCHNITT.

Note: Elevations in black were taken before  
the Evans contract, Elevations in blue  
were taken after the Evans contract

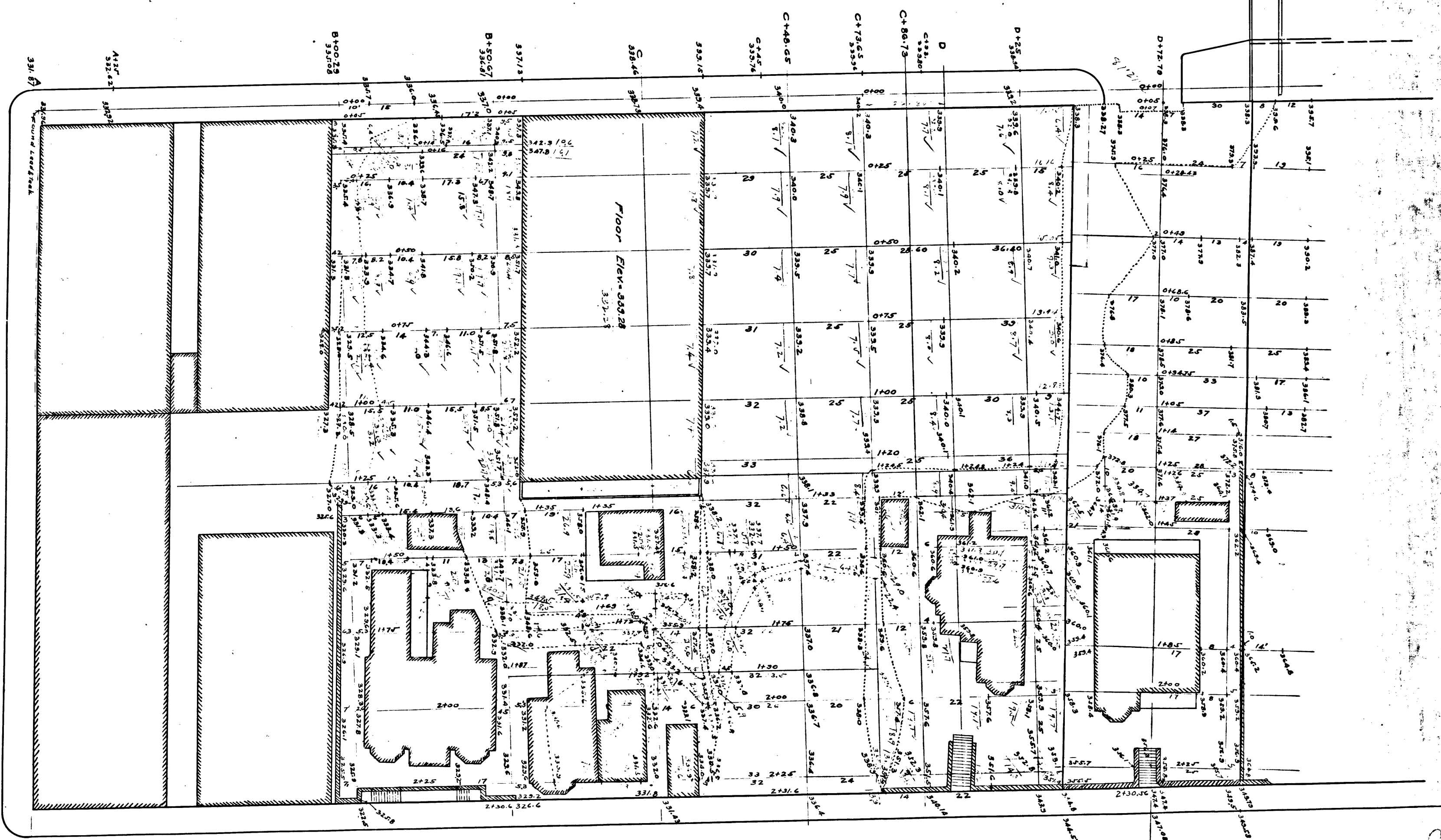


AS PER PLAN OF SURVEY OF  
JANUARY 1922

NORTH BROADWAY

CALIFORNIA ST.

TEMPLE ST.



CS 8494 | SHT. 2

BUENA VISTA ST.

County Map