

AVE. I
 MAP OF
SIERRA MADRE ROAD
 FROM
 SOUTHWEST CORNER TO SOUTHEAST CORNER SEC. 12, T. 7N., R. 11W.

COUNTY SURVEYORS MAP NO 8495

J. E. Rockhold County Surveyor
 Surveyed May - 1922

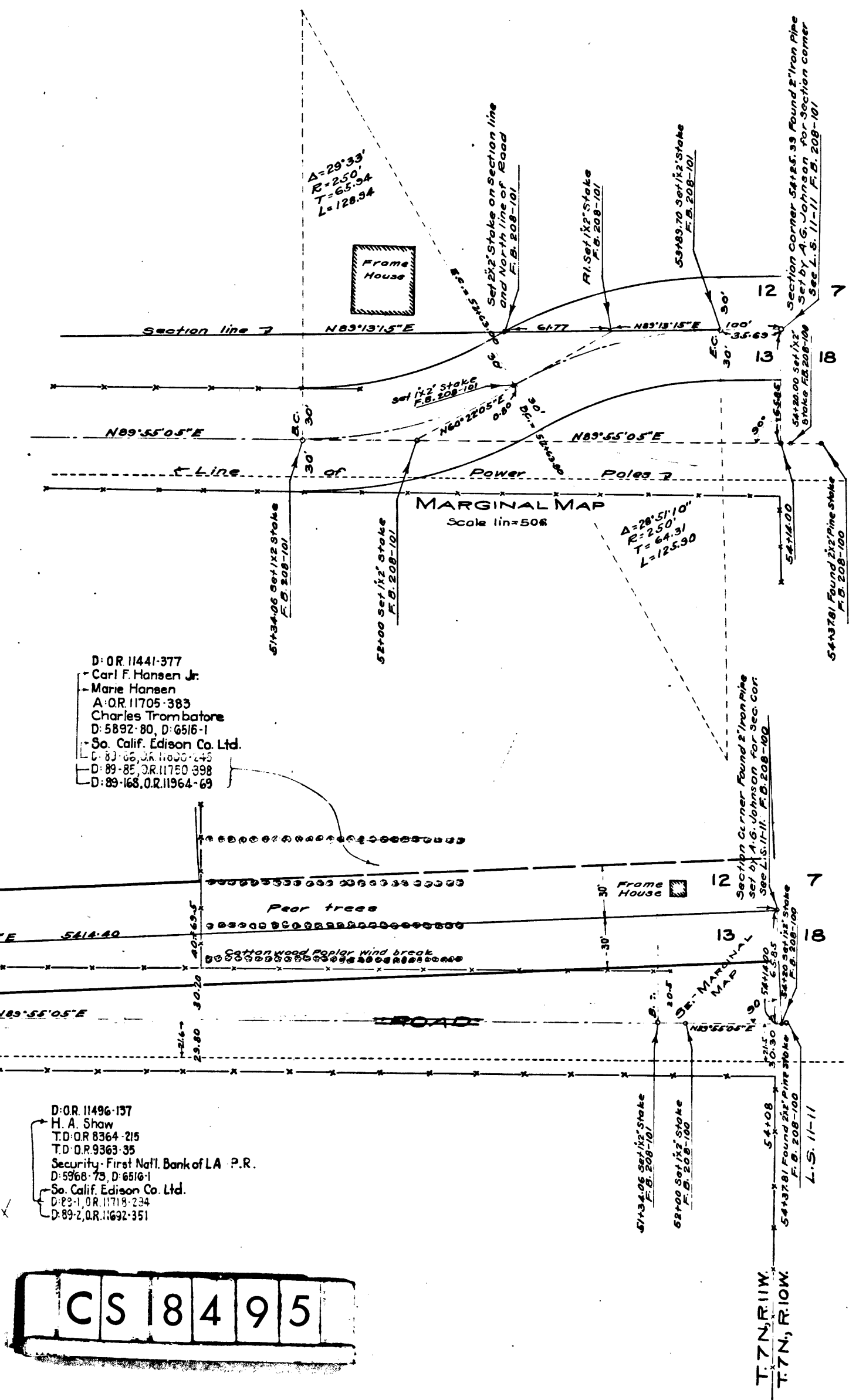
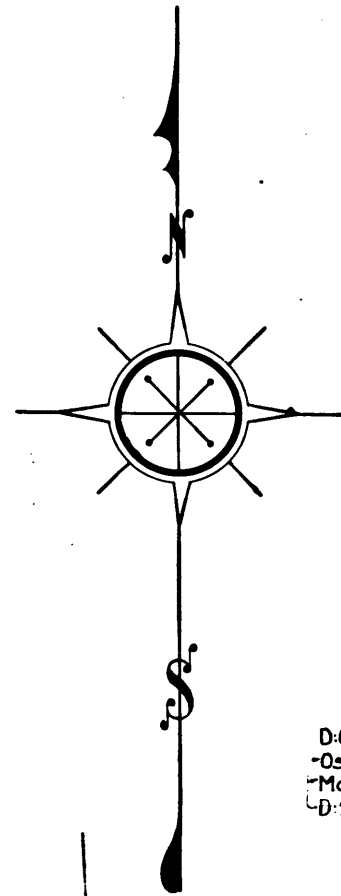
Scales longitudinal lin. = 200 ft.
 lateral lin. = 50 ft.

Bearings based on the center line of Midway Road per C.S. 8202.

R.B. 208-9970101
 Field work by.....Comly
 Office work by.....Irwin
 Checked by.....Morgan.

Sht. 70

Sierra Madre Rd. changed to Avenue I - D. 49-197



D: 5878-183, D: 6329-70
 D: 6554-155, D: 7295-145
 James B. Nourse
 Letona G. Nourse
 Elizabeth Nourse
 T.D. O.R. 10773-175
 Security-First National Bank of L.A.
 C. 13-242, O.R. 11510-137

D: 5155-223
 Louis Arce
 C. 85-172, O.R. 11052-279

D: O.R. 8808-312
 Oscar B. Mortensen
 Marqaret V. Mortensen
 C. 91-159, O.R. 12158-107

D: O.R. 11441-377
 Carl F. Hansen Jr.
 Marie Hansen
 A. O.R. 11705-383
 Charles Trombatore
 D: 5892-80, D: 6516-1
 So. Calif. Edison Co. Ltd.
 C. 83-62, O.R. 11005-145
 D: 89-82, O.R. 11750-398
 D: 89-168, O.R. 11964-69

E: 59-73, O.R. 21235-67
 D: O.R. 9598-66
 William E. Farmer
 Lulu Farmer
 T.D. O.R. 9973-1
 Security-First Nat'l. Bk of L.A.
 L. O.R. 7480-174
 E. H. Williams
 D: 5964-85, D: 6516-1
 So. Calif. Edison Co. Ltd.
 D: 89-86, O.R. 11800-245

D: O.R. 9594-284
 May L. Archer
 T.D. O.R. 9857-31
 Title Guarantee & Trust Co.
 L. O.R. 7480-174
 E. H. Williams
 D: 5964-85, D: 6516-1
 So. Calif. Edison Co. Ltd.
 D: 89-86, O.R. 11800-245

D: 5764-46
 Annabelle Metcalf
 D: 5930-278, D: 6516-1
 Southern Calif. Edison Co. Ltd.
 D: 85-132, O.R. 11123-272
 D: 89-86, O.R. 11800-245

D: O.R. 11496-137
 H. A. Shaw
 T.D. O.R. 8364-215
 T.D. O.R. 9365-35
 Security-First Nat'l. Bank of L.A. P.R.
 D: 5968-73, D: 6516-1
 So. Calif. Edison Co. Ltd.
 D: 82-1, O.R. 11719-234
 D: 89-2, O.R. 11692-351

CS 8495

T. 7N., R. 11W.