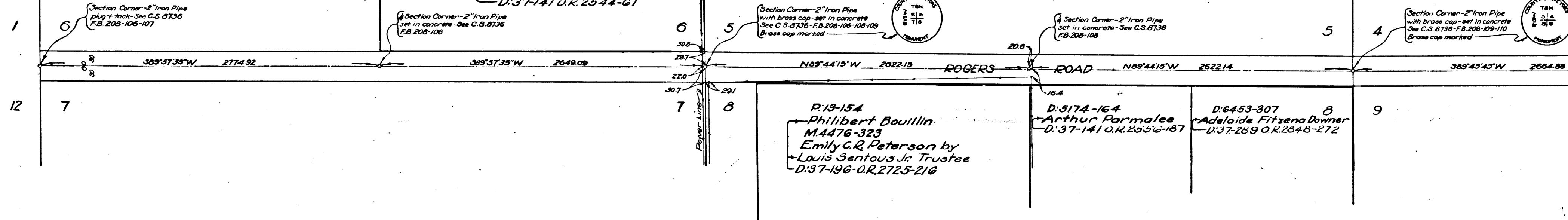


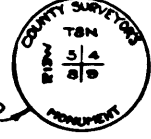
T8N-R14W

T8N-R13W



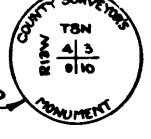
CS 8505  
A1 OF A4

Section Corner - 2" Iron Pipe  
with brass cap - set in concrete  
See C.S. 8736 - F.B. 208-109-110  
Brass cap marked



Section Corner - 2" Iron Pipe  
set in concrete - See C.S. 8736  
F.B. 208-110

Section Corner - 2" Iron Pipe  
with brass cap - set in concrete  
See C.S. 8736 - F.B. 208-111 + 113  
Brass cap marked



Section Corner - 2" Iron Pipe  
set in concrete - See C.S. 8736  
F.B. 208-113 E. 174-2.2 O.R. D 522-233

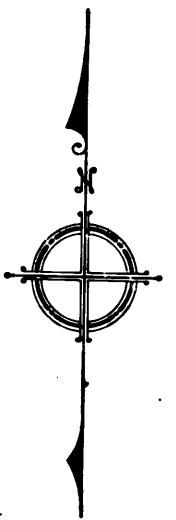
Section Corner - 2" Iron Pipe  
plug + tack - See C.S. 8736  
F.B. 208-113 + 115

Section Corner - 2" Iron Pipe  
set in concrete - See C.S. 8736  
F.B. 208-115

D.O.R. 1457-246  
Gertrude A. Hart  
D:37-1410, R. 2556-186

C.S. B 495

N.P.C. #34013  
Frank A. Ingersoll, Adm'r. of Est. of Levi A. Ludwig, Dec'd.  
D: 6180-313  
Southern California Edison Co Ltd. (Corp) No for poles



389°45'45"W 2664.88      389°45'45"W 2664.88      389°28'25"W 2624.76      389°28'25"W 2624.76      N 68°30'35"W 2646.32      N 68°30'35"W 2646.31

9

10

10

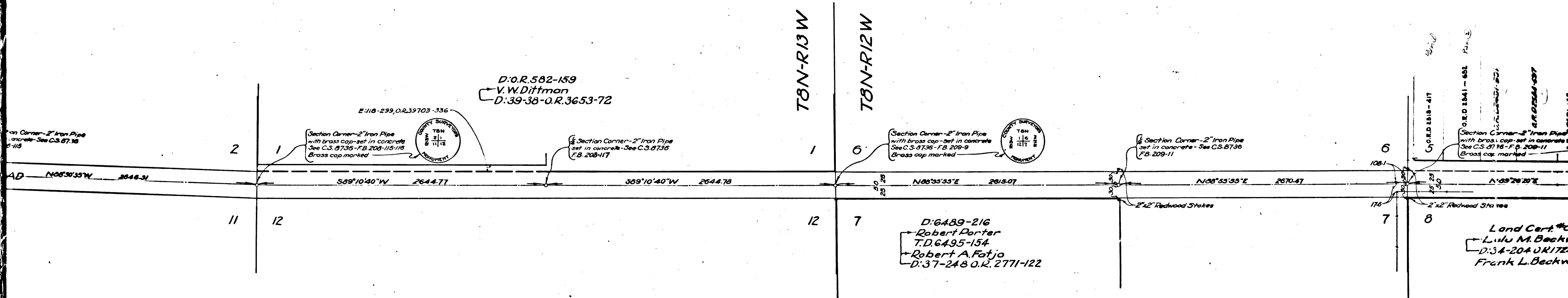
11

D:1271-212  
Algina Rose  
D:37-1422 O.R. 2544-62

D:6522-143  
H.W. Carter  
D:37-172 O.R. 2646-260

ROGERS ROAD

CS 8505  
A2 OF A4

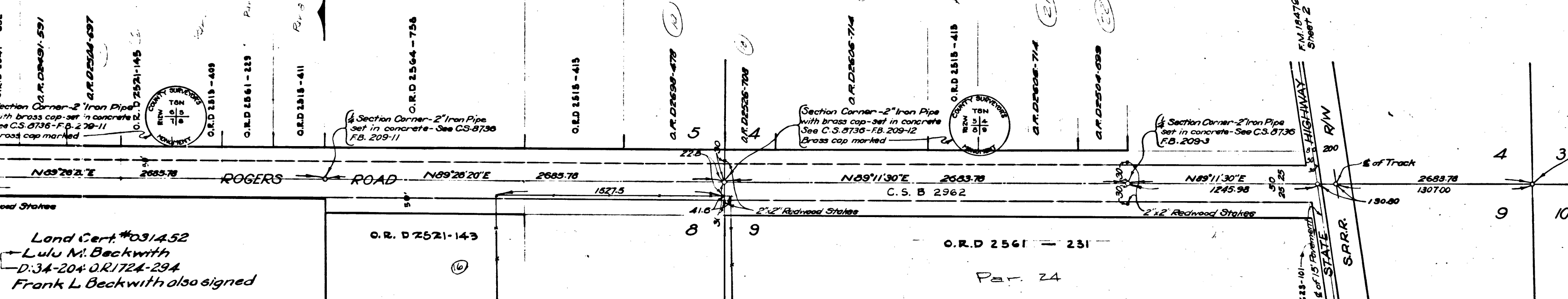


D.O.R. 582-159  
 V.W. Dittman  
 D. 39-38-O.R. 3653-72

D. 6489-216  
 Robert Porter  
 T.D. 6495-154  
 Robert A. Fatjo  
 D. 37-248 O.R. 2771-122

Land Cert. #03  
 Lulu M. Beckwith  
 D. 34-204 O.R. 1722  
 Frank L. Beckwith

CS 8505  
 A3 OF A4



Land Cert #031A52  
Lulu M. Beckwith  
D:34-204 O.R.172A-29A  
Frank L. Beckwith also signed

**AVE. B**  
MAP OF  
**ROGERS ROAD**  
FROM  
SOUTHWEST CORNER OF SECTION 6 - T8N-R13W  
TO  
STATE HIGHWAY

COUNTY SURVEYOR'S MAP NO. 8505  
Scale - Longitudinal - 1 inch = 400 feet  
Lateral - 1 inch = 100 feet

J.E. Rockhold - County Surveyor  
Surveyed - January + April, 1922  
Surveyed under instructions of the Board of Supervisors  
per order dated Sept. 22, 1921  
Bearings as shown on C.S. 8736

FB. 208-106 to 116  
FB. 209-3, 9, 11, 12  
Field Work by H. Conly + H. Waite  
Office Work by E.W. Anderson  
Checked by E.J. Brook

Sht. 71  
For Later Survey See  
C.S.B. 5104-3-12  
Rogers Road changed to Avenue B - D:49-156

CS 8505  
A4 OF A4

For Later Survey See C.S. 5104-3-12