

CS	8507
A1	OF A4

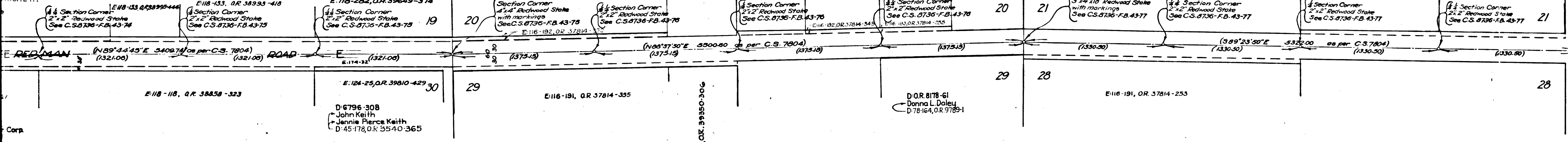
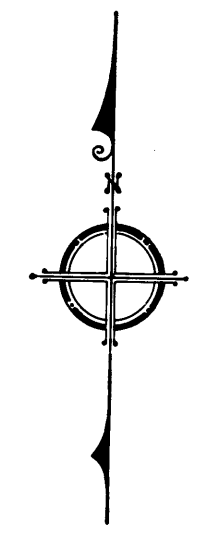
9-101, O.R. 38787-417
28
V. Haymond
R. 8172.117

D:5959-206
Charles R Applewhite
Jdg. Bk. 560-178
Southern Trust Co
Sec. Tr. & Sav. Bk.
D:73-293, O.R. 3799-181

D:4030-19
Milton Cheney
D:76-50, O.R. 8171-341

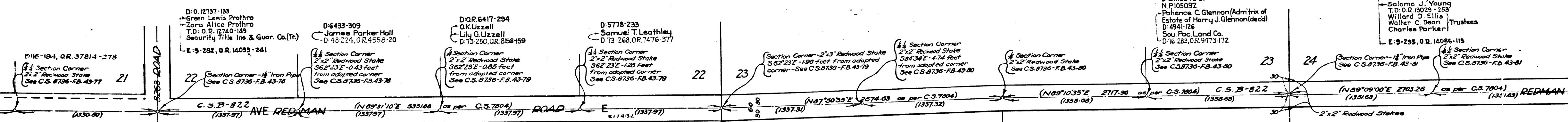
D:O.R. 4706-201
Homer E. Sweet
Effie M. Sweet
D:73-253, O.R. 7481-371

D:O.R. 308-174 - D:O.R. 3576-90
Homer E. Sweet
Effie M. Sweet
D:O.R. 785-105
Albert J. Redemski



Corp.

CS	8	5	0	7
A	2	OF	A	4



D.O. 12737-133
 Green Lewis Prothro
 Zora Alice Prothro
 T.D. O.R. 12740-149
 Security Title Ins. & Guar. Co. (Tr.)
 E: 9-292, O.R. 14033-241

D-6433-309
 James Parker Hall
 D-48-224, O.R. 4558-20

D-O.R. 6417-294
 O.K. Uzzell
 Lily G. Uzzell
 D-73-250, O.R. 8156-159

D-5778-233
 Samuel T. Leathley
 D-73-268, O.R. 7476-377

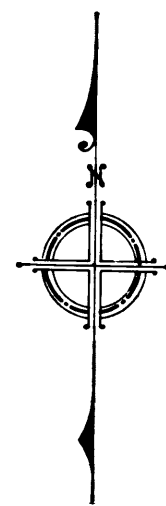
D-O.R. 3972-81
 N.P. 105092
 Patience C. Glennon (Adm'rix of
 Estate of Harry J. Glennon (decd))
 D-49-1126
 Sou. Pac. Land Co.
 D-76-283, O.R. 9473-172

D-O.R. 7930-8, D-O.R. 8007-252
 Fred Young
 Salome J. Young
 T.D. O.R. 13029-253
 Willard D. Ellis
 Walter C. Dean
 Charles Parker
 Trustees
 E: 9-295, O.R. 14086-115

For Additional Monuments set in these 2 miles
 See C.S. B-822

CS 8507
 A3 OF A4

D-O.R. 7185-28
 Wm. H. Anderson
 D-76-26, O.R. 31



W.S. 85 A-2
7-11-12

D: O.R. 7930-8, D: O.R. 8007-252
Fred Young
Solome J. Young
T.D. O.R. 13029-259
Willard D. Ellis
Walter C. Dean
Charles Parker
Trustees

E: 9-295, O.R. 1407-115
Section Corner
2"x2" Redwood Stake
See C.S. 8736-FB. 43-81

D: 7949-126
W.E. McCaslin
Edythe M. Caslin
D: 73-219, O.R. 7469-317

Section Corner
2"x2" Redwood Stake
See C.S. 8736-FB. 43-81

Section Corner
2"x2" Redwood Stake
See C.S. 8736-FB. 43-82

D: O.R. 3335-225
W.D. Caswell, Harriet U. Longwell
The Federal Land Bank of Berkeley, Corp.
E: 11-2, O.R. 14088-2, 5

Section Corner - 2" Iron Pipe
with brass cap set in concrete
See C.S. 8736-FB. 43-82
Brass cap marked



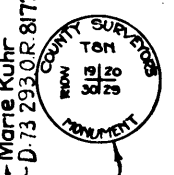
D: O.R. 8947-70
Harvey Kuhr
T.D. O.R. 8943-361
T.D. O.R. 8996-229
California Title Insurance Co.
D: 73-250, O.R. 8140-211

Section Corner - 2" Iron Pipe
See C.S. 8731-FB. 43-85
For ties see F.B. 213-7

D: O.R. 7340-202
Harvey Kuhr
Billie B. Kuhr
T.D. O.R. 8998-239
California Title Insurance Co.
D: 73-250, O.R. 8140-211

Section Corner - 2" Iron Pipe
with brass cap set in concrete
See C.S. 8731-FB. 43-85
Brass cap marked
For ties see F.B. 213-6

D: O.R. 7735-117
Harvey Kuhr
Alfred O. 8863-367
D: 73-250, O.R. 8172-110



E: 2703.26 as per C.S. 7804 (1351.63) REDMAN AVE (N45°57'20"E 2009.28 as per C.S. 7804 (1349.53) ROAD (N45°51'25"E 2627.65) as per C.S. 7804 (194.32) 24 19 3587 32.92 25 30

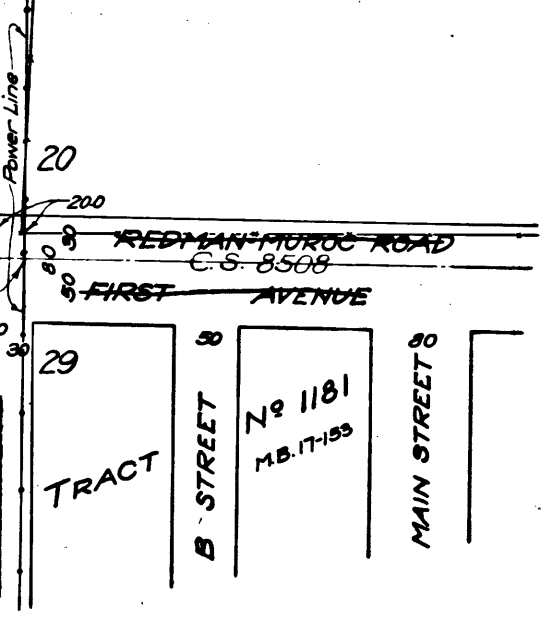
D: O.R. 7185-289
W.H. Anderson, Inc.
D: 76-26, O.R. 3801-281

D: O.R. 3447-77
E.R. Shoups
D: 73-218, O.R. 9131-370

D: O.R. 7121-187
Harvey Kuhr
T.D. O.R. 8864-341
Title Insurance and Trust Co.
D: 73-250, O.R. 8671-150

D: 908-758
Paul Eckhard
D: 76-38, O.R. 8276-197

D: 8426-197
D: 73-250, O.R. 8671-150



AVE. E

MAP OF REDMAN ROAD

DIVISION FROM ST. MOJAVE ROAD
90TH TO ST. E
SOUTHEAST CORNER OF SECTION 19- T8N-R10W

COUNTY SURVEYOR'S MAP NO. 8507
Scale - Longitudinal - 1 inch = 400 feet
Lateral - 1 inch = 100 feet
J.E. Rockhold - County Surveyor
Surveyed - July, 1912

Surveyed under instructions of the Board of Supervisors
per order dated
Bearings as shown on C.S. 8731 + C.S. 8736
F.B. 43-72 to 83
Field Work by J.H. Skagge
Office Work by W.H. Anderson
Checked by E.J. Brook
Sht. 69
Sht. 70

Redman Rd. changed to Avenue E - Redman Rd. - D: 49-158
Avenue E - Redman Rd. changed to Avenue E. - E: 174-32

CS 8507
A4 OF A4