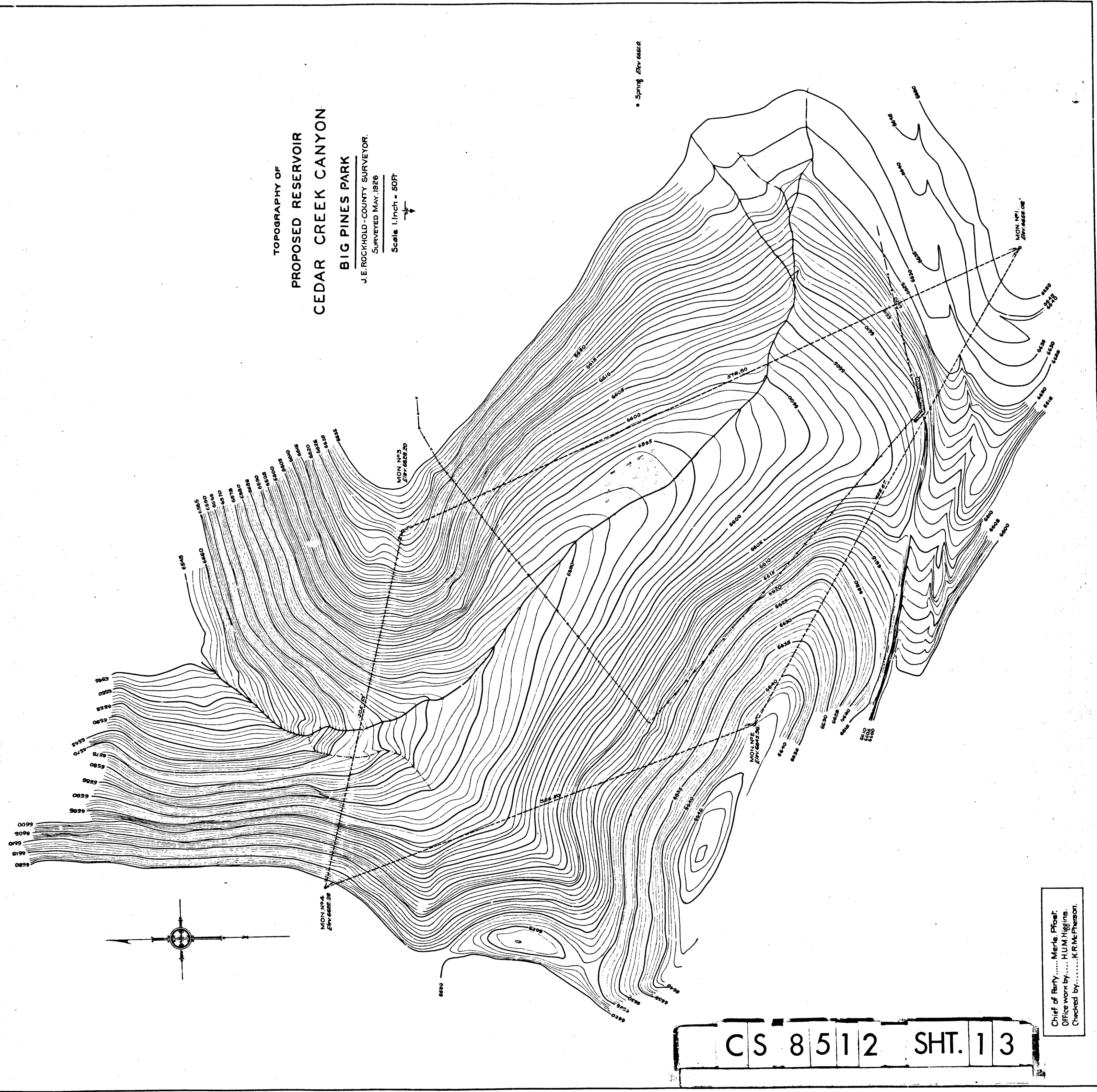




VEMCO
PACIFIC

957

10TH



TOPOGRAPHY OF
PROPOSED RESERVOIR
CEDAR CREEK CANYON
BIG PINES PARK

J. E. ROCKHOLD - COUNTY SURVEYOR.
SURVEYED MAY, 1926.
Scale 1 inch = 50 ft.

• Spring Elev. 6652.0

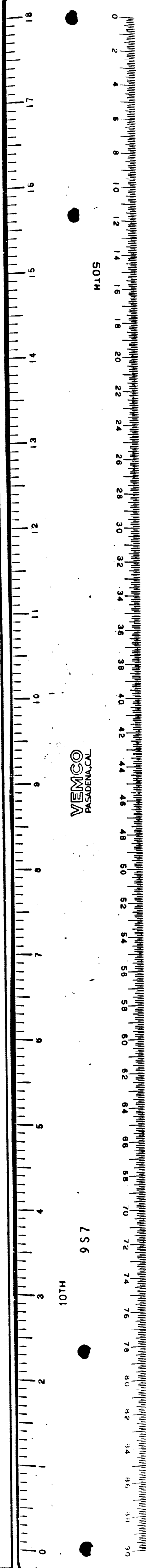
MON. NO. 4
Elev. 6622.20

MON. NO. 3
Elev. 6622.20

MON. NO. 1
Elev. 6622.20

CS 8512 SHT. 13

Chief of Party.....Merle Pfohl
Office work by.....HUM Higgins
Checked by.....K. E. Peterson



VEMCO
PACIFIC

957

10TH