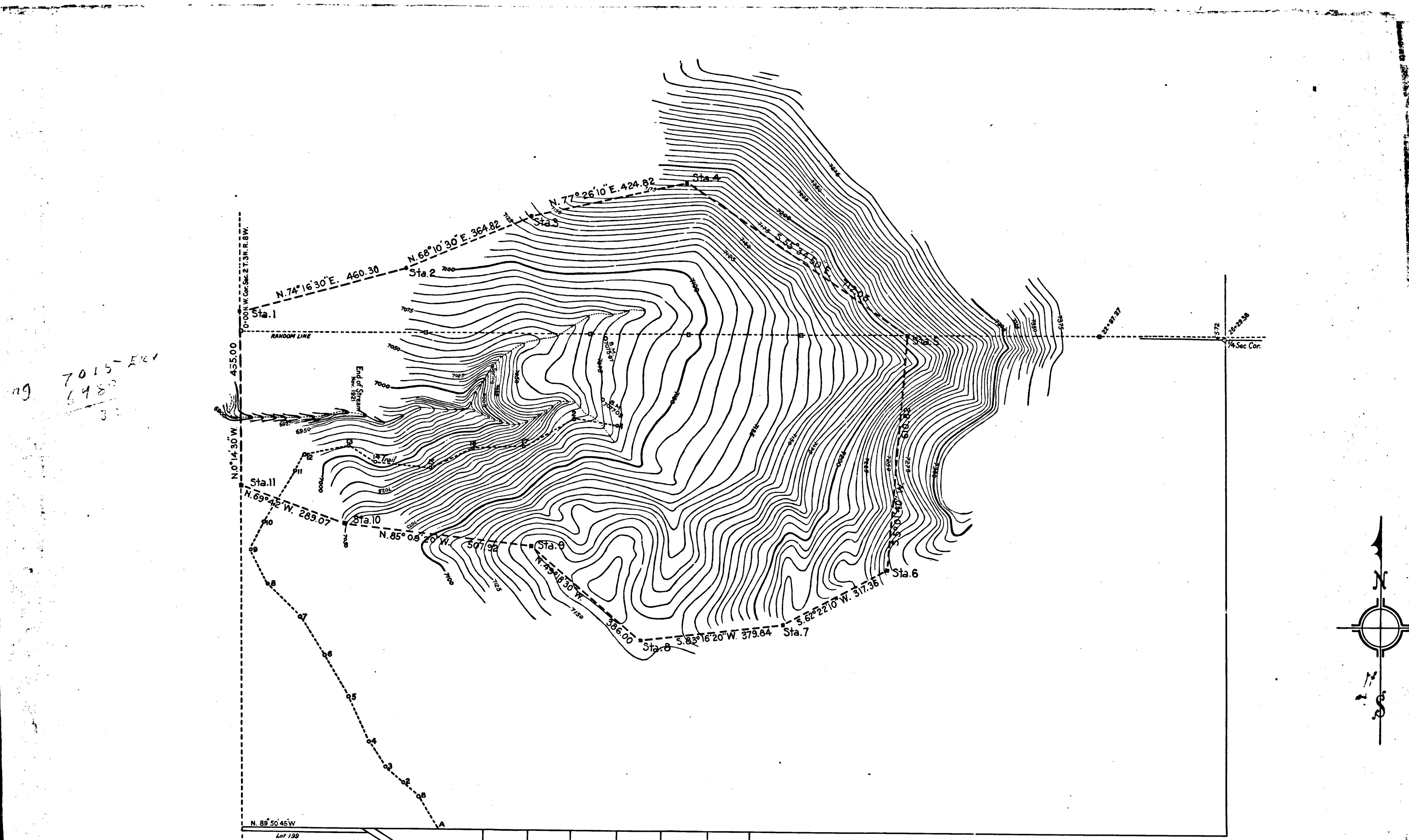


10TH 957 50TH



50TH 957 10TH

182 181 180 179 178 177 176 Tract No 1057
M.B. 22-90.31

MAP OF
LOS ANGELES COUNTY
PLAYGROUND No 1
SHOWING TOPOGRAPHY AND LOCATION OF BOUNDARY POSTS
TOPOGRAPHY BASED ON ELEVATION OF U.S. GEOLOGICAL SURVEY
B.M. AT SUMMIT OF PASS BETWEEN SWARTOUT VALLEY & MESCAL CREEK
AREA WITHIN BOUNDARY LINES CONTAINING 34.14 ACRES
COUNTY SURVEYORS MAP No 8812.
J.E. ROCKHOLD COUNTY SURVEYOR
SURVEYED October 6, 1921
SCALE = 1 inch = 200 feet.

I.M. 15

CS 8512 SHT. 2