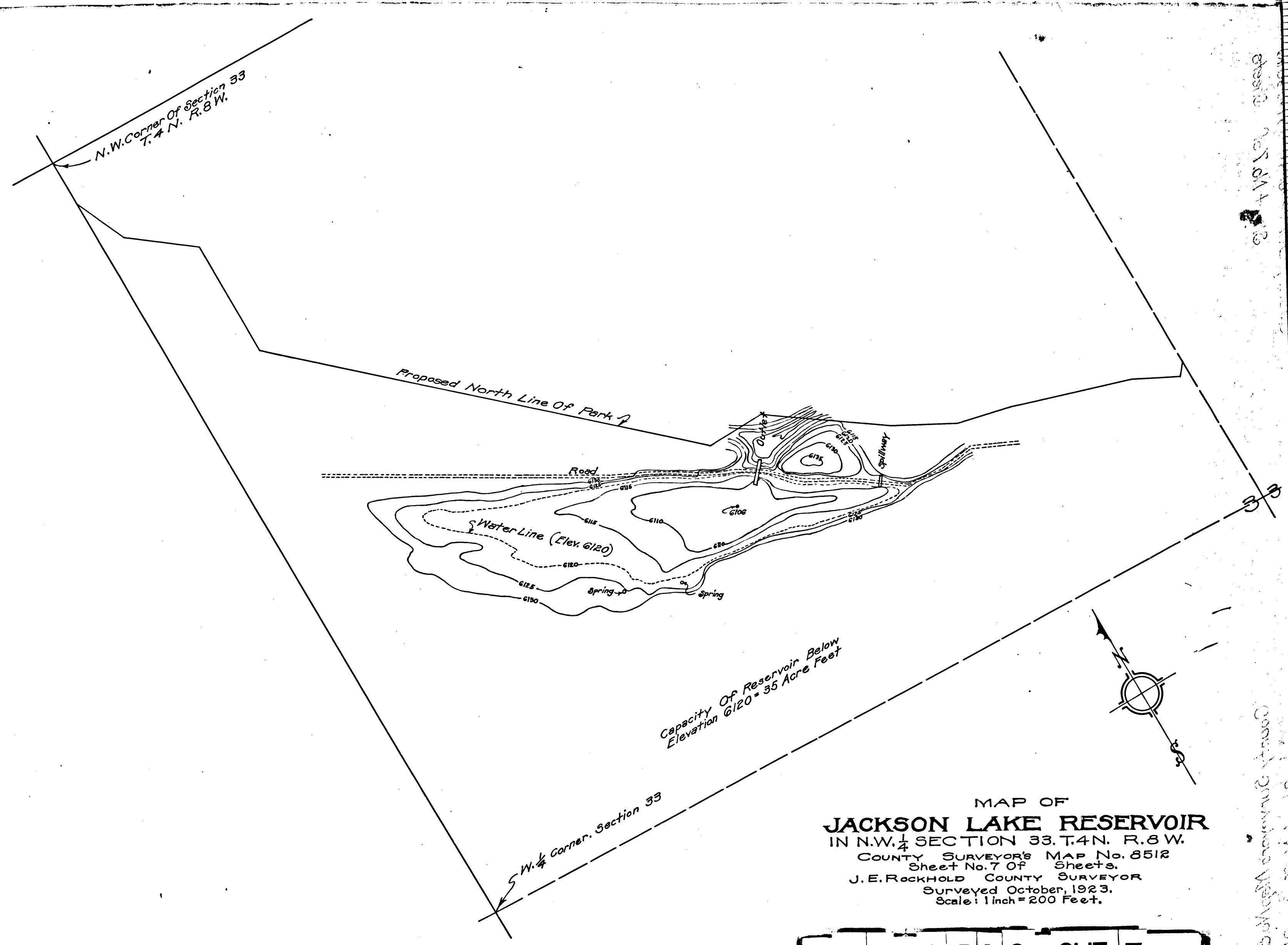


CONVEY TO J. E. ROCKHOLD

QUEST NO. 101



Capacity Of Reservoir Below  
Elevation 6120 = 35 Acre Feet

MAP OF  
**JACKSON LAKE RESERVOIR**  
IN N.W. 1/4 SECTION 33, T.4N. R.8W.  
COUNTY SURVEYOR'S MAP No. 8512  
Sheet No. 7 Of Sheets.  
J. E. ROCKHOLD COUNTY SURVEYOR  
Surveyed October, 1923.  
Scale: 1 inch = 200 Feet.

CS 8512 SHT. 7

5ht. 15

MEMCO  
PASADENA, CALIF.

MEMCO  
PASADENA, CALIF.

957

10TH